

# SAP PLANT MAINTENANCE – ISSUE TO MAINTENANCE ORDER

This application helps you issue material to a maintenance order.

---

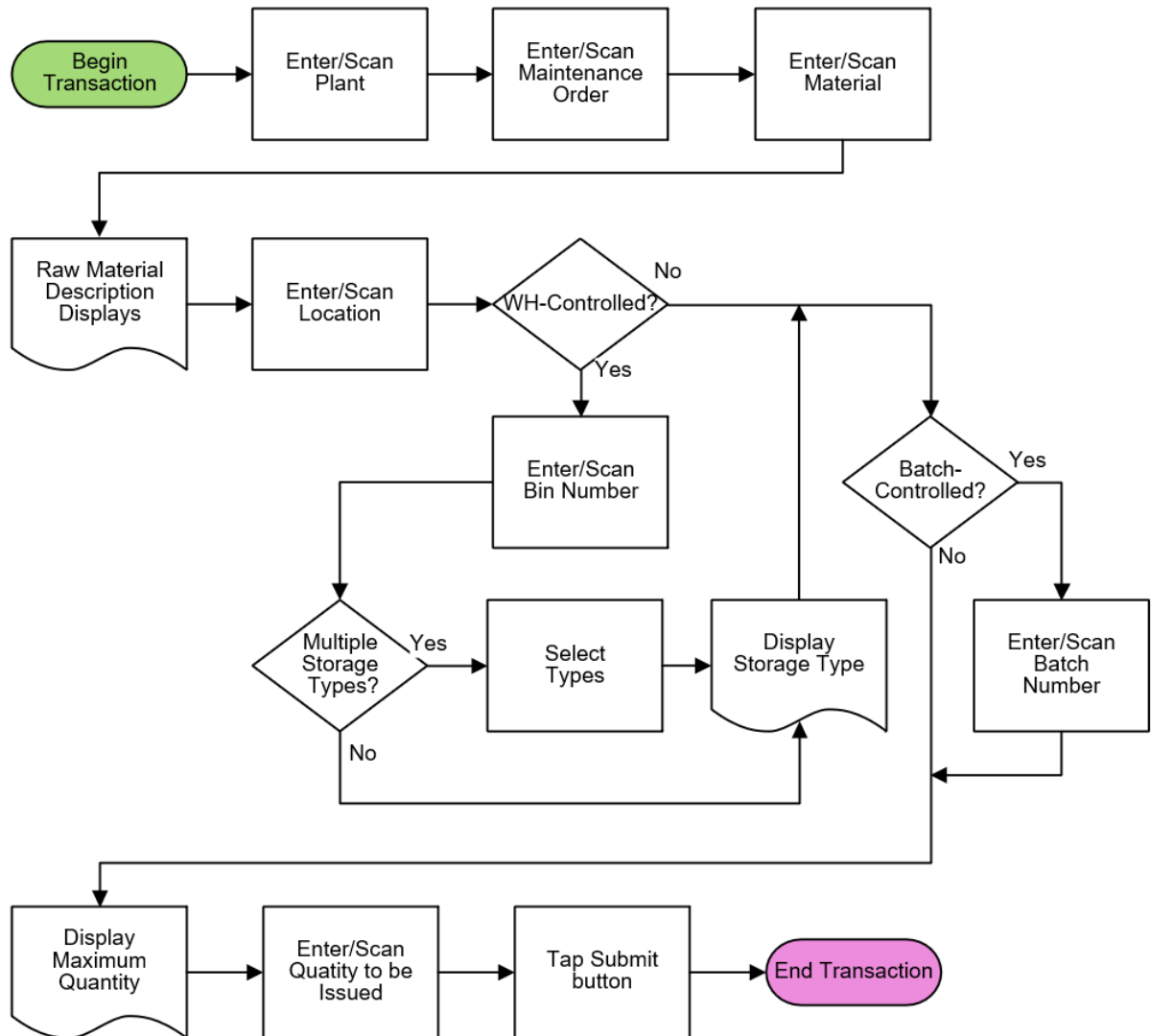
RFgen Functional Documentation

2022

RFgen provides its customers SAP-validated, ready-to-use suites of applications and a development environment that can be used to create new apps or to modify existing apps.

This document describes the business workflow and technical information used in this application

## SAP: PM – Issue to Maintenance Order



## FPMCW0200 PM – Issue to Maintenance Order

This application helps you issue material to a maintenance order.



### Description of Workflow

As the user selects values from each field, the selections are added to the top of the application.

First, the user scans, enters, or searches for a plant value.

The user scans or enters a maintenance order.

The user then scans, enters, or searches for a material to issue. Searching for material will show a list of components on the maintenance order. The material's description will be displayed.

The user scans, enters, or searches for a location where the material exists.

If the location is a warehouse-controlled location the Bin and Type fields will appear. Based on the material, the batch value from the reservation will be displayed if the material is batch-controlled.

The user scans, enters, or searches for a Bin number that the material exists. If multiple storage types are associated with that bin, the user will be prompted to pick one type from a list.



If the material is Batch-controlled, the Batch field will be visible. The user scans, enters, or searches for a batch number that is assigned to the material specified.

The maximum quantity available of the material is shown. The user enters the quantity to issue.

If the material is Serial-controlled, the Serial field will be visible. If entering serial numbers, the Serial field will continue to have focus until the count of serial number is equal to the quantity entered in the Quantity field.

When the user taps the **Submit** button, the issue is posted to SAP and the application is reset.

The arrow in the upper left corner removes the current entry and moves the cursor back to the previous prompt until the user reaches the menu.

