

SAP PLANT MAINTENANCE – CREATE PLANT MAINTENANCE ORDER

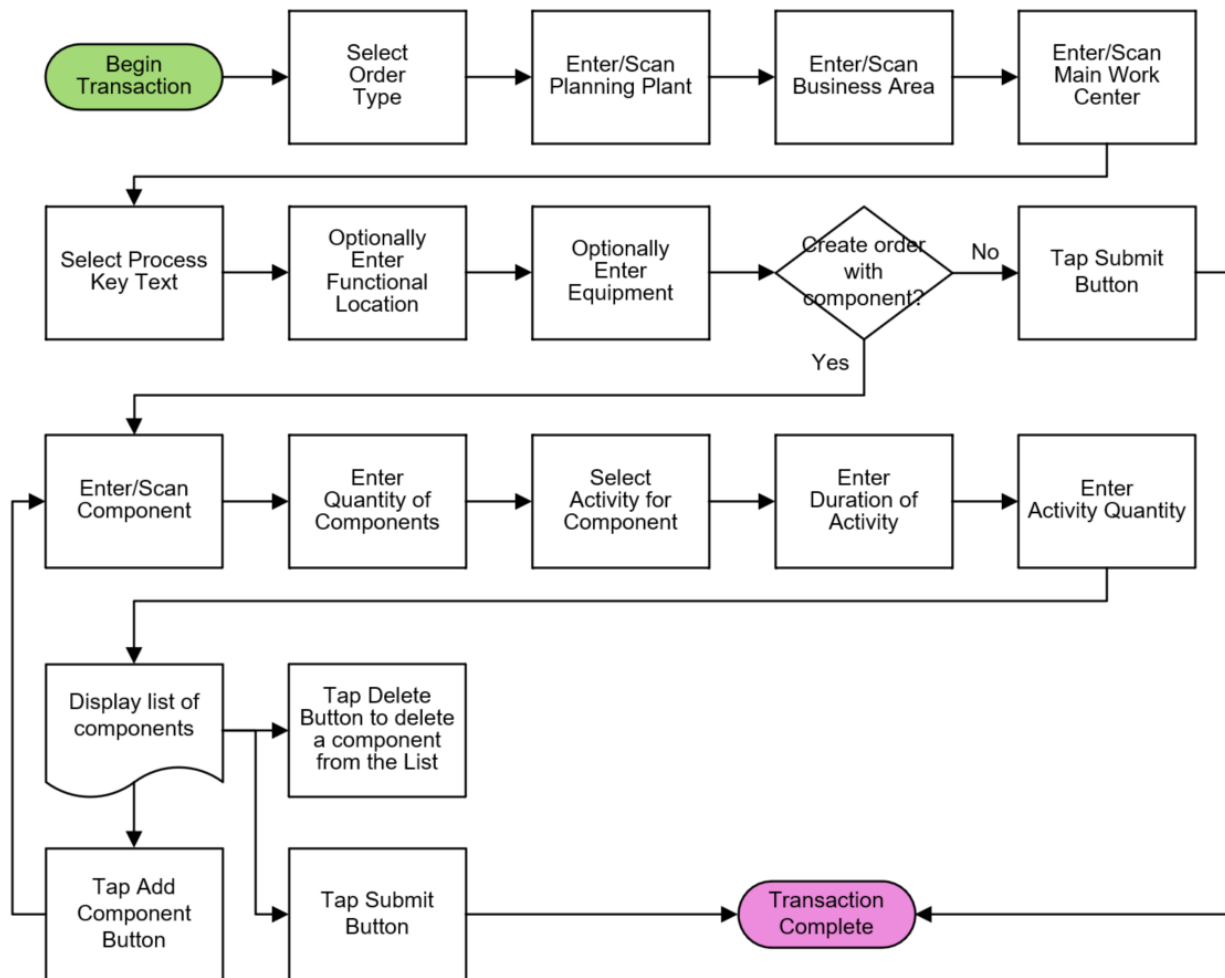
This application will create a plant maintenance order for a piece of equipment or functional location that requires attention.

RFgen Functional Documentation
2022

RFgen provides its customers SAP-validated, ready-to-use suites of applications and a development environment that can be used to create new apps or to modify existing apps.

This document describes the business workflow and technical information used in this application.

SAP: PM – Create Plant Maintenance Order Workflow



FPMCO0200 PM – Create Plant Maintenance Order

This application will create an order to attend to equipment or a functional location that requires maintenance.



Description of Workflow

As the user enters each field, the selection is added to the top of the application.

First the user selects the type of order being created from the Type field.

The user scans, enters, or searches for the Planning Plant.

The user scans, enters, or searches for the Business Area.

The user scans, enters, or searches for the Main Work Center.

Based on the Order Type selected, a list of Actions displays. The user selects an action from the list.

The Functional Location field is optional. If desired, user scans, enters, or searches for a Functional Location or skips this field.

Then the user scans, enters, or searches for an equipment number from the Equipment field.



PM Orders can be created with or without components. Components are tools, supplies, or items needed to maintain the equipment.

- If no component is needed, the user leaves the Component field blank and taps the **Submit** button to finish the order. After submission, the App is refreshed and returns the user to the Order Type prompt.
- If one or more components are needed, the user scans, enters, or searches for a component in the Component field.

For each component entered, the quantity is also required. The user enters the quantity of the component.

Then the user selects an activity. The activity describes how the component will be used.

Lastly, the user estimates and enters how long it will take to use the selected component in the Duration field, and how many resources (people) are required in the Activity Quantity field.

After completing the component information, a list of added components displays.

Editing the Component Page

To add or remove a component, the user taps the **Add Component** or **Delete** button.

Tapping the **Submit** button posts the data to SAP and resets the application.

The arrow in the upper left corner moves the cursor back to the previous prompt until the user reaches the menu.