

DataMAX Software Group, Inc.
El Dorado Hills, CA 95762
USA

Deltek Costpoint - Location Inquiry by Part

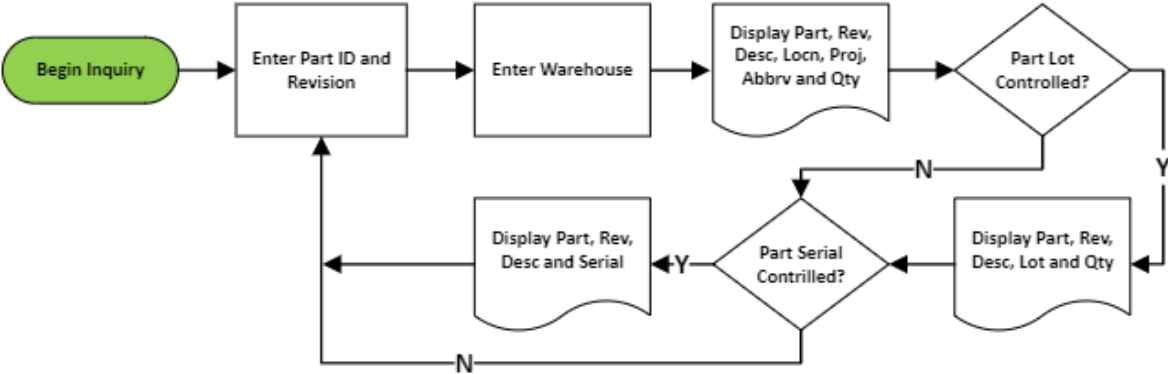
This application shows a list of locations, projects, inventory abbreviations and on-hand quantities for the selected part, revision, and warehouse.

RFgen Functional Documentation 2022

RFgen provides its customers Costpoint-validated, ready-to-use suites of applications and a development environment that can be used to create new apps or to modify existing apps.

This document describes the business workflow and technical information used in this application.

Costpoint: Location Inquiry by Part Workflow



FIMQ0300 – Location Inquiry by Part

This application shows a list of locations, projects, inventory abbreviations and on-hand quantities for the select part, revision, and warehouse.



Description of Workflow

Navigating the App

The **back arrow** in the upper left corner removes the current entry and moves the cursor back to the previous prompt/page unless noted otherwise. It also returns the user to the menu from the first prompt.

As the user searches, the inquired part lists at the top of the application.

Workflow Details

First the user enters, searches, or scans the Part ID.

If the part only has one revision, the revision is defaulted, and the user taps the **Next** button (or Enter button) to move to the next prompt. If the part has more than one revision, the user enters, searches, or scans the revision before it moves to the next prompt.

The part, revision, and description list at the top of the screen.

Next, the warehouse value defaults from the user's profile. The user can either accept the default and tap the **Next** button, or the user



can change the value by entering, searching, or scanning the warehouse.

A "Select for Lot/Serials Detail" list organized by part location (Locn), quantity (Qty), and the project/ abbreviation (Abbr) displays.

To view a lot or serial details, the user selects a location/row from the "Select for Lot/Serials Detail" list.

- If the part is neither lot nor serial controlled, the user can simply tap the New Inquiry button to continue onto a new search.
- If the part is lot and serial-controlled, the lot and quantity for the prior selection displays.
- If the part is also serialized, tapping the **Serial** button will display a list of serials associated with the selected lot.

Customization Considerations

If you are planning on creating a new version of this application or modifying it for a customer, consider asking these questions to help prepare your list of customization requirements.

1. Are there serial-controlled items?
2. Are there lot-controlled items?
3. Are there default sites/warehouses/etc. users are expected to transfer to/from?
4. Should users be allowed transfer to/from serial or lot numbers? For example, should users be allowed to change an item-specific serial or batch allocation?

