

Deltek Costpoint - Part Inquiry by Location

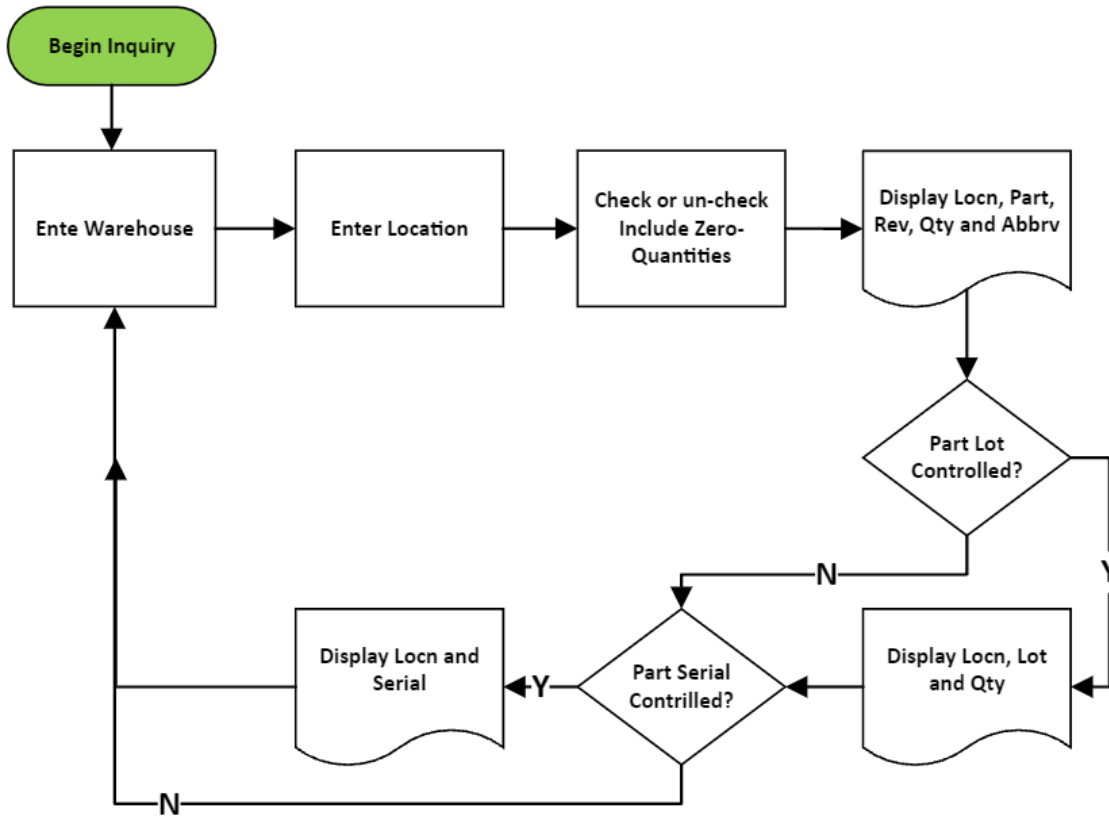
This application shows a list of parts, part revisions, inventory abbreviations and on-hand quantities for the selected warehouse and location.

RFgen Functional Documentation 2021

RFgen provides its customers Costpoint-validated, ready-to-use suites of Open Source applications and a development environment that can be used to create new apps or to modify existing apps.

This document describes the business workflow and technical information used in this application.

Costpoint: Part Inquiry by Location Workflow



FIMPQ0300 – Part Inquiry by Location



This application shows a list of parts, part revisions, inventory abbreviations and on-hand quantities for the selected warehouse and location.

Description of Workflow

The Warehouse field displays the value defaulted from the users profile. The user can tap the Next button to accept the value or change it by entering, searching, or scanning the warehouse.

The user enters, searches, or scans the stock's location. A checkbox to include zero quantities in the search displays.

The user checks the **Include Zero-Quantities** box to include locations with inventory or zero inventory. If the box is unchecked, the inquiry for zero quantities is suppressed.

The user taps the **Search** button.

The location displays at the top of the screen. A "Select for Lot/Serial Details" list grouped by part, revision, on hand quantity, and abbreviation displays below the Location.

First the user selects a row/line from the Details list, then taps the **View Lots** or **View Serials** button at the bottom of the screen.

If the part is not lot-controlled or serial-controlled, a **New Search** button displays.



If the item/part is lot controlled, the **View Lots** button displays. If tapped, the location and the lot numbers associated with the previous selection and **New Search** button display. The **New Search** button resets the application.

If the item/part lot and serial-controlled, a **Serial** button will display. If tapped, the serials associated with the location, abbreviation, and lot display above the **New Search** button.

If the part is only serial-controlled, the **View Serials** button displays. If tapped, the serial numbers associated with the location, part, revision and abbreviation from the prior selection display above the **New Inquiry** button. If tapped, the **New Inquiry** button resets the application.

At any time, the user can tap the back arrow in the upper left corner and be returned to the previous screen.

Customization Considerations

If you are planning on creating a new version of this application or modifying it for a customer, consider asking these questions to help prepare your list of customization requirements.

1. Are there serial-controlled items?
2. Are there lot-controlled items?
3. Are there default sites/warehouses/etc. users are expected to transfer to/from?
4. Should users be allowed transfer to/from serial or lot numbers? For example, should users be allowed to change an item-specific serial or batch allocation?

