

Microsoft Dynamics 365 OUTBOUND – SALES ORDER PICKING

This application is used to pack and ship the inventory items registered in a Sales Order Pick. Items are submitted with an outbound inventory receipt.

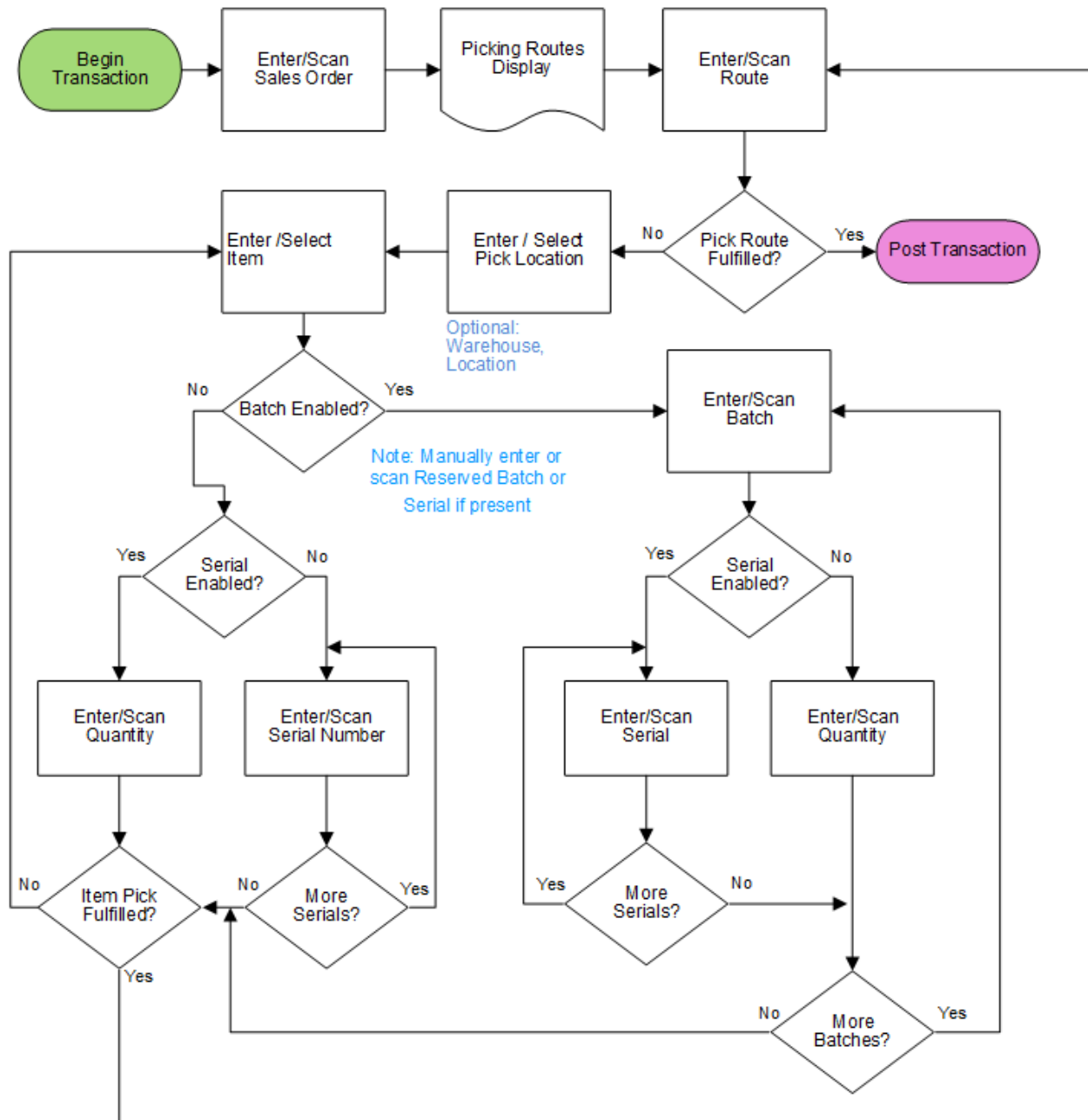
RFgen Functional Documentation
2021

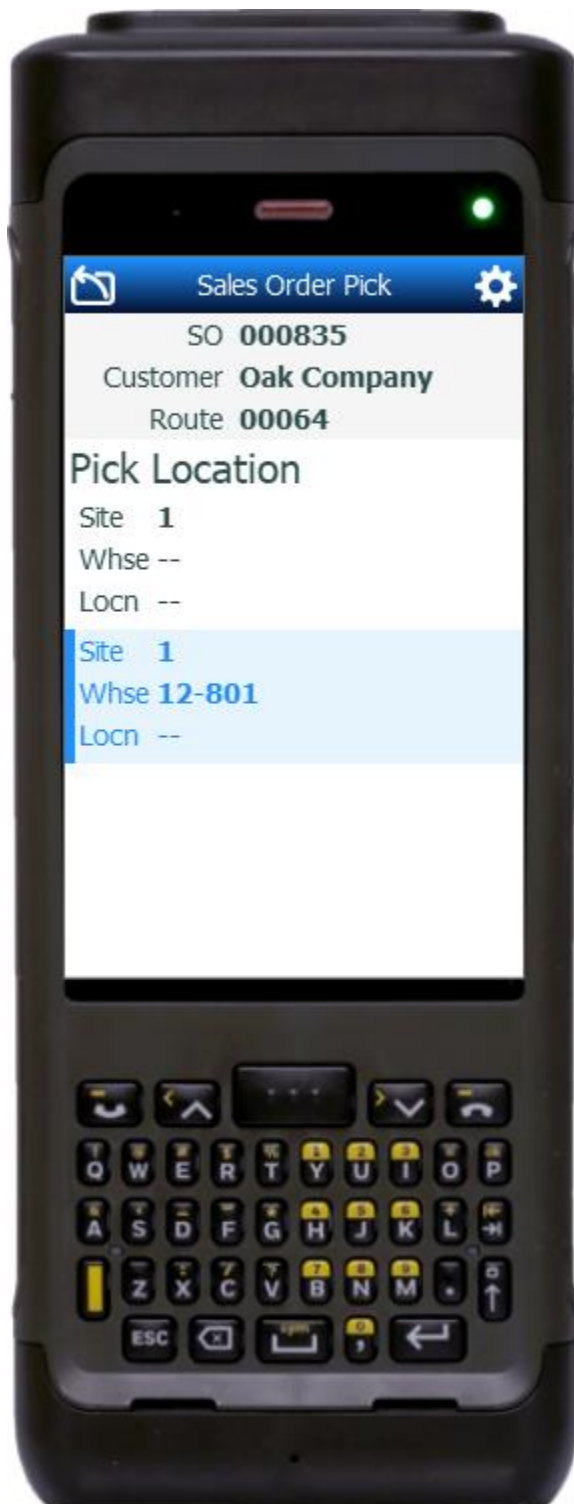
RFgen provides its customers Dynamics-validated, ready-to-use suites of Open Source applications and a development environment that can be used to create new apps or to modify existing apps.

This document describes the business workflow, technical information, and analysis questions for planning customizations to this application.



Microsoft Dynamics: Outbound - Sales Order Pick





FOBSPI400 – Outbound: Sales Order Pick

This application is for the Microsoft Dynamics 365 Finance & Operations ERP. It is used to pack items that were registered in the Sales Order Pick transaction and ship them from inventory. Items are submitted with an outbound inventory receipt.

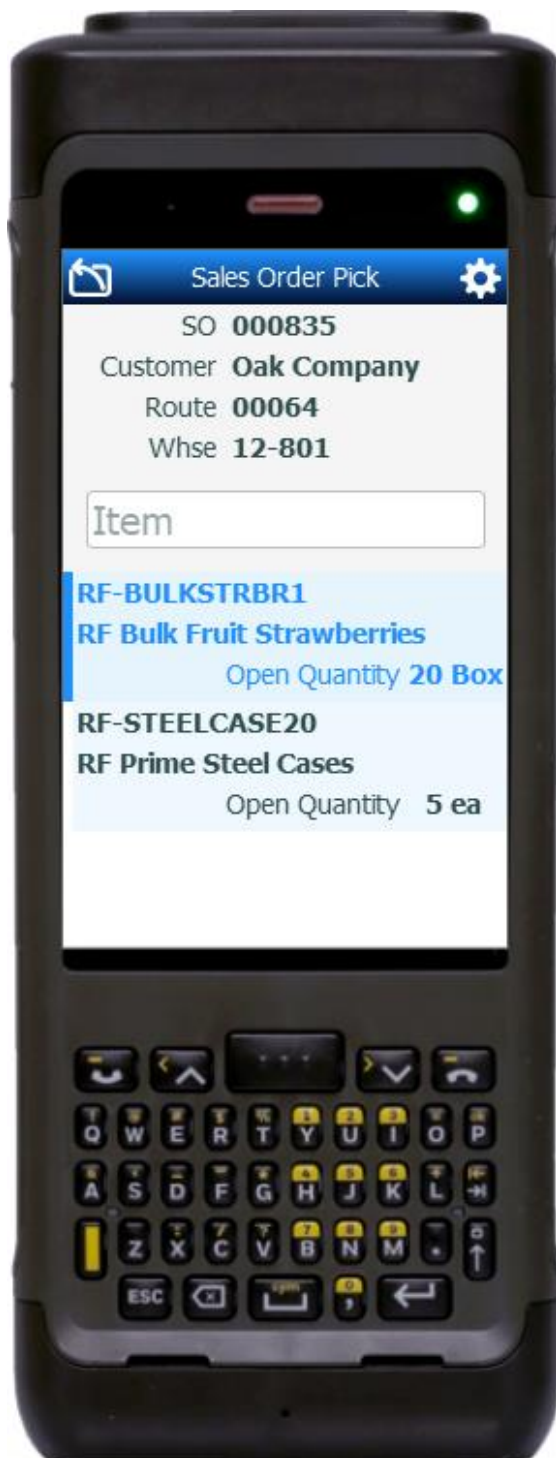
Description of Workflow

The user scans, enters, or searches for a sales order.

The list picking routes by route id displays.

The user scans, enters, or selects a route.

A consolidated list of picking locations is displayed. Route items without a location or warehouse are consolidated to the next highest dimension. The user selects the next dimension (ie. Location) until the list of items displays.



user reaches the menu.

A consolidated list of items reserved at the selected location is displayed.

The user scans, enters, or selects an **Item**.

If an item does not have all of its dimensions defined yet (i.e. a Location controlled item only has its Warehouse reservation defined), the user will be asked to enter the remaining dimensions after selecting the item.

If the item is neither batch nor serial, the user will be prompted to enter the quantity.

If the item is only batch-enabled, the user is prompted to enter or scan a batch (a number or any text) and then enter the quantity.

If the item is batch-enabled and serial-enabled, after the batch is entered, the Serial field displays, and the user scans or enters a serial number. The serial number tracks multiple entries and displays the total received serial count.

If the item is only serial-enabled, then the serial field displays and the user is prompted to enter the serial and a serial count will display the updates.

Navigating the App

At any time, the user can tap the return icon in the upper left corner of the application. Each tap removes the current entry and moves the cursor back to the previous prompt until the

The **Change Item** button saves changes in the application (not the ERP) and returns the user to the page of pick list lines.

The **Change Location** button saves changes in the application (not the ERP) and returns the user to the page of pick locations.

The **Submit** button will post completed sales order picks to the ERP. Note that partial picks for a sales order are not posted unless the application was customized to post partial picks.

Customization Considerations

If you are planning on creating a new version of this application or modifying it for a customer, consider asking these questions to help prepare your list of customization requirements.

1. Are there serial-controlled items?
2. Are there batch-controlled items?
3. How many steps of validation are required for complete packing?

