

Microsoft Dynamics 365 PRODUCTION CONTROL – REPORT AS FINISHED

This application posts a finished quantity to a production order as a *Report as Finished* journal entry.

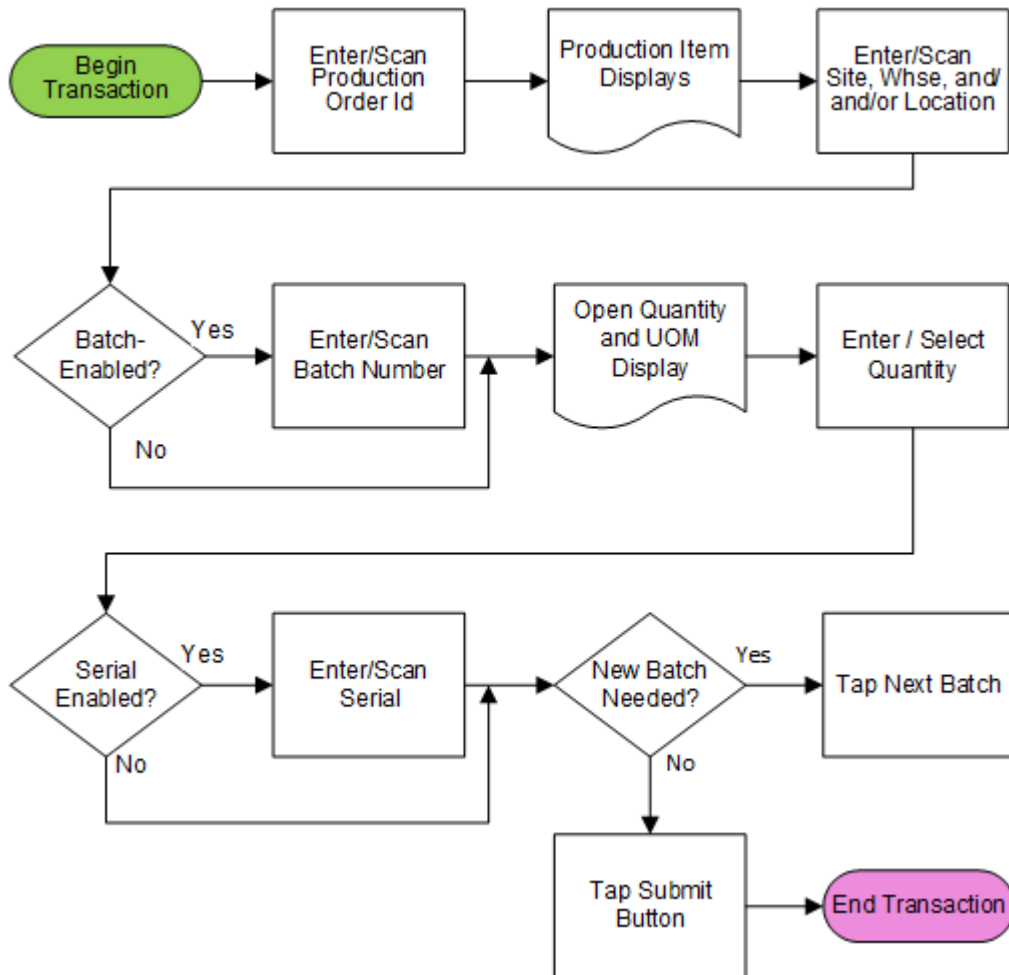
RFgen Functional Documentation
2021

RFgen provides its customers Microsoft Dynamics-validated, ready-to-use suites of Open Source applications and a development environment that can be used to create new apps or to modify existing apps.

This document describes the business workflow, technical information, and analysis questions for planning customizations to this application.



Microsoft Dynamics: PR – Report as Finished Workflow



FPRRAF400 – Report as Finished



This application posts a finished quantity to a production order as a *Report as Finished* journal entry.

Workflow Description

First the user scans, enters, or searches for a Production Order ID.

The user scans, enters, or searches the production site, warehouse, and location, if enabled.

If batch is enabled, then the user scans or enters a batch number.

The Open Quantity and Unit of Measure display. The user enters the quantity in the Quantity field.

If serial is enabled, then the user scans or enters a serial number. The serial tracks multiple entries and displays a count of serials that were entered.

The user can tap the **Next Batch** button to add a new production batch entry if Batch is enabled or tap the **Submit** button to complete the transaction.

If the user taps Submit, the *Report as Finish* document will post to the ERP.



The arrow in the upper left corner removes the current entry and moves the cursor back to the previous prompt until you reach the menu.

Customization Considerations

If you are planning on creating a new version of this application or modifying it for a customer, consider asking these questions to help prepare your list of customization requirements.

1. Are there serial-controlled items?
2. Are there batch-controlled items?
3. Are there default sites/warehouses/etc. users are limited to at production?
4. Will pickers know of the Production Order number sourcing their picking route?
5. What is the business task or logic generating new serial/batch numbers at production confirmation?

