

Microsoft Dynamics 365 PRODUCTION CONTROL – PRODUCTION ORDER PICKING

This application confirms picking list registration for a production order.

RFgen Functional Documentation

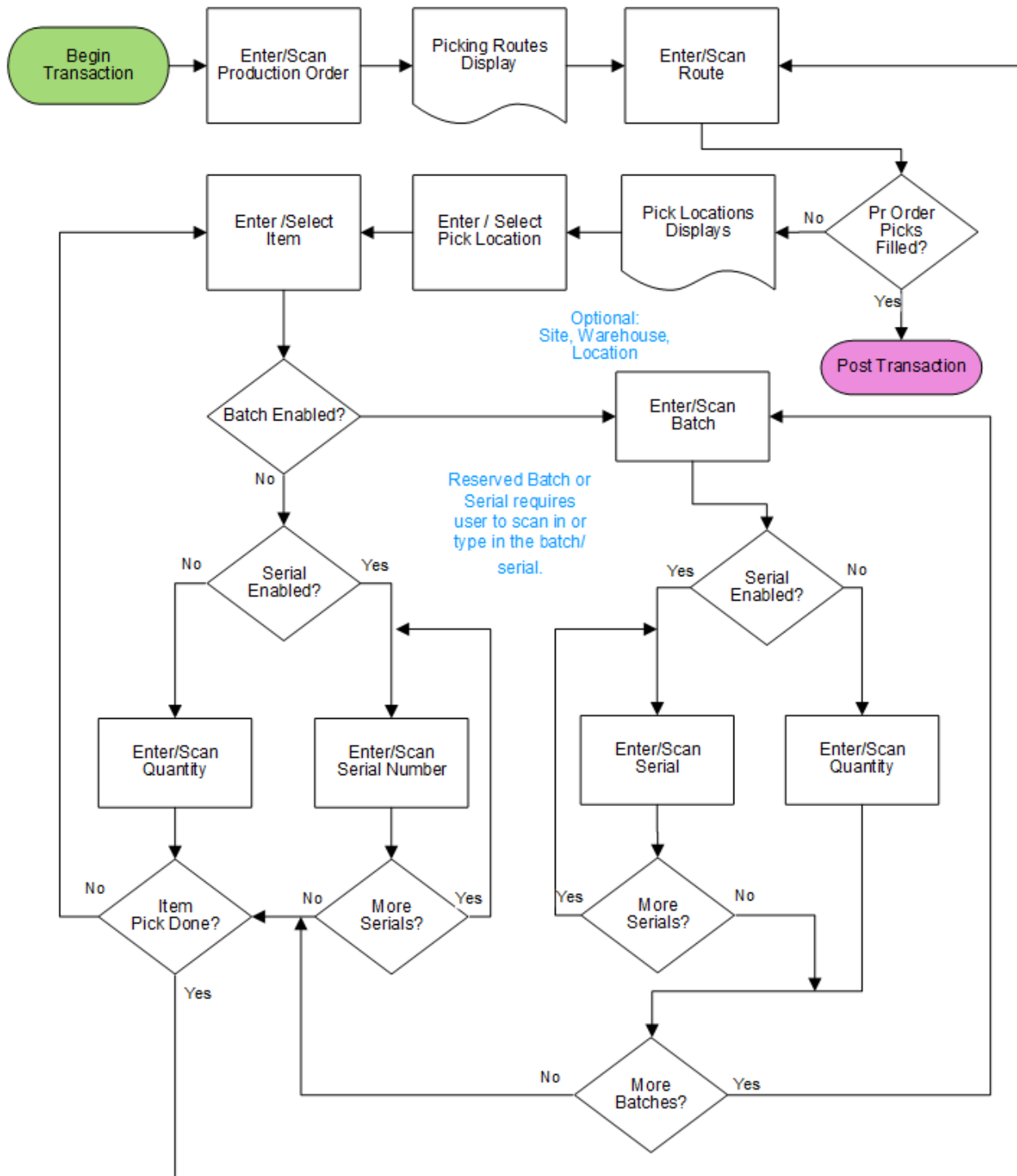
2021

RFgen provides its customers Microsoft Dynamics-validated, ready-to-use suites of Open Source applications and a development environment that can be used to create new apps or to modify existing apps.

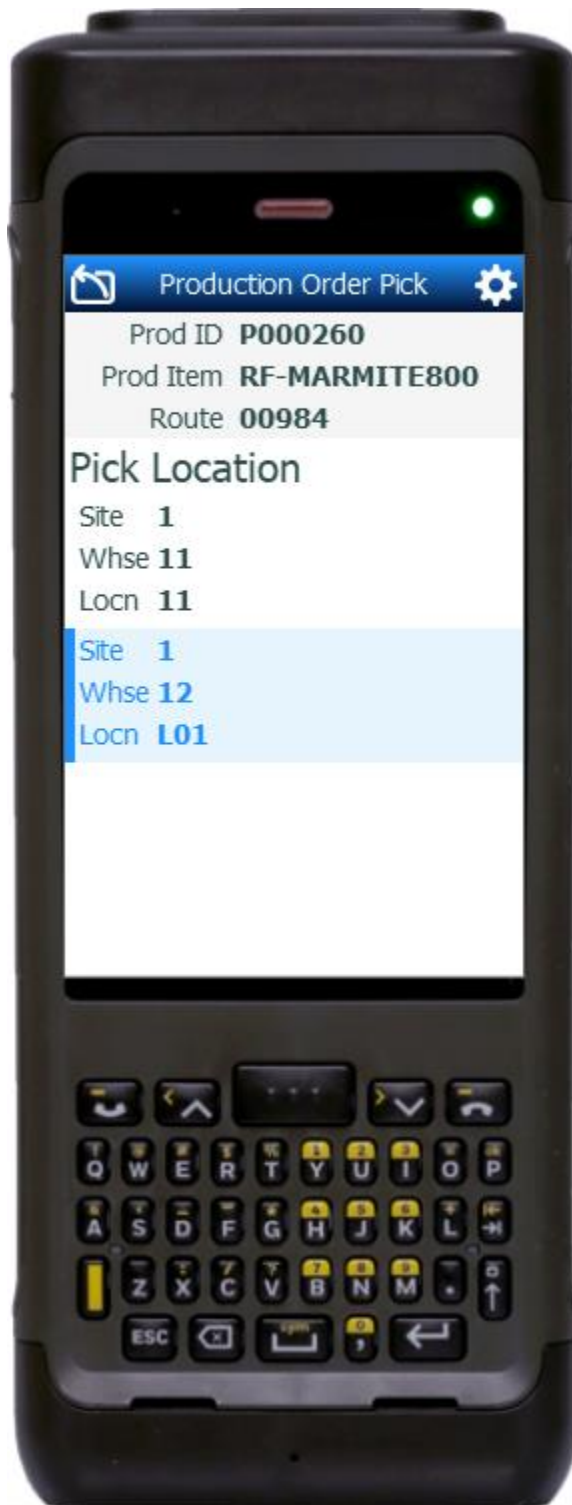
This document describes the business workflow, technical information, and analysis questions for planning customizations to this application.



Microsoft Dynamics: PR – Production Order Picking Workflow



FPRPOP400 – Production Order Picking



This application confirms picking list registration for a production order.

Workflow Description

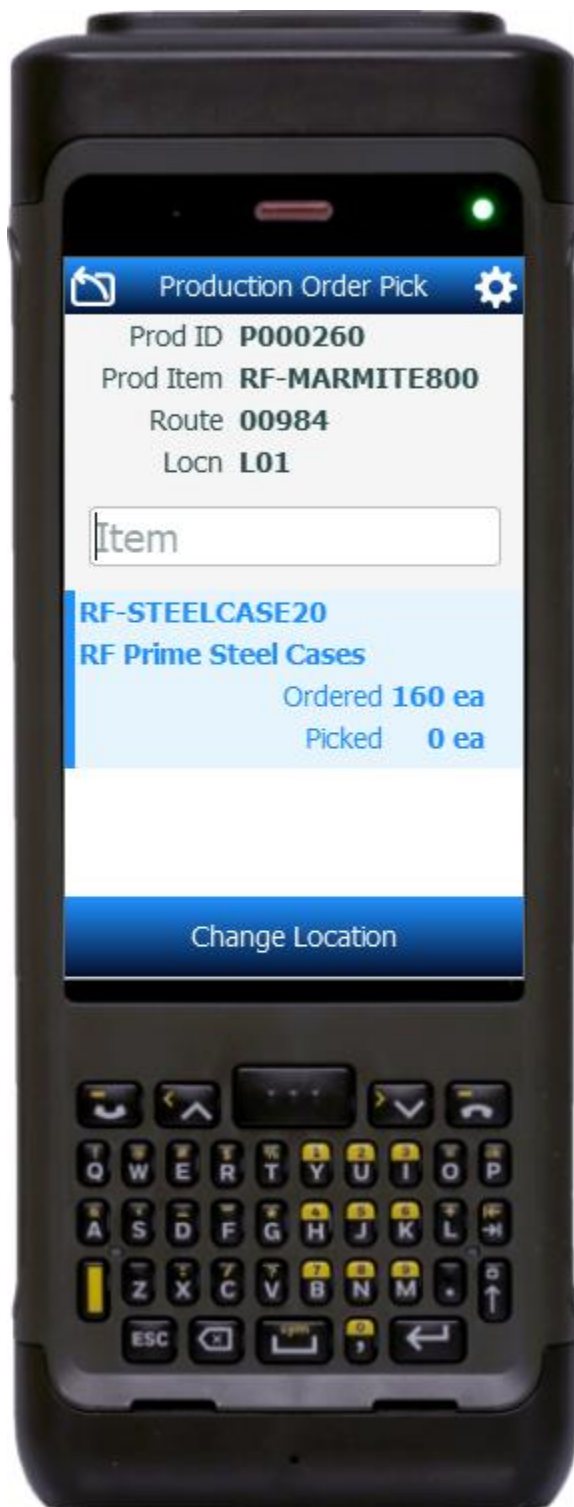
The user scans, enters, or searches for a production order.

The list of picking routes by route id displays. The user scans, enters, or selects a route.

The list of pick locations displays.

Note: Route items without a location or warehouse are consolidated to the next highest dimension. The user selects the site and next dimension (ie. warehouse, location) until the list of items displays.





The list of unpicked/ partially picked items displays. The user selects the item to be picked.

Note: If an item does not have all of its dimensions defined, the user will be prompted to enter the remaining dimensions after selecting the item.

Items could be setup as batch or serial enabled, reserved batch or reserved serial enabled, batch and serial enabled, or neither batch or serial.

If the item is neither batch nor serial, the user will be prompted to enter the quantity.

If the item is only batch-enabled, the user is prompted to enter or scan a batch (a number or any text) and then enter the quantity.

If the item is batch-enabled and serial-enabled, after the batch is entered, the serial field displays, and the user scans or enters a serial number. The serial number tracks multiple entries and displays the total received serial count.

If the item is only serial-enabled, then the serial field displays and the user is prompted to enter the serial and a serial count will display the updates..

If the batch or the serial is reserved, the user must scan in or type in the reserved id.



Navigating the App

At any time, the user can tap the return icon in the upper left corner of the application. Each tap removes the current entry and moves the cursor back to the previous prompt until the user reaches the menu.

The **Change Locations** button saves partially picked items to the application (NOT the ERP) and takes the cursor back to the Pick Locations page.

The **Change Items** button saves changes to the application, and takes the user back to the Pick Items page.

When all items for a production order are picked, RFgen automatically posts the updates to the ERP.

Customization Considerations

If you are planning on creating a new version of this application or modifying it for a customer, consider asking these questions to help prepare your list of customization requirements.

1. Are there serial-controlled items?
2. Are there batch-controlled items?
3. Are there default sites/warehouses/etc. users are limited to at picking?
4. Will pickers know of the Production Order number sourcing their picking route?
5. Will picking routes be automatically generated by the ERP?

