

Microsoft Dynamics 365 PRODUCTION CONTROL – FINISH AS BACKFLUSH

This application posts a finished quantity to a production order then posts the consumed material quantity as a backflush using the ERP's default reservation properties.

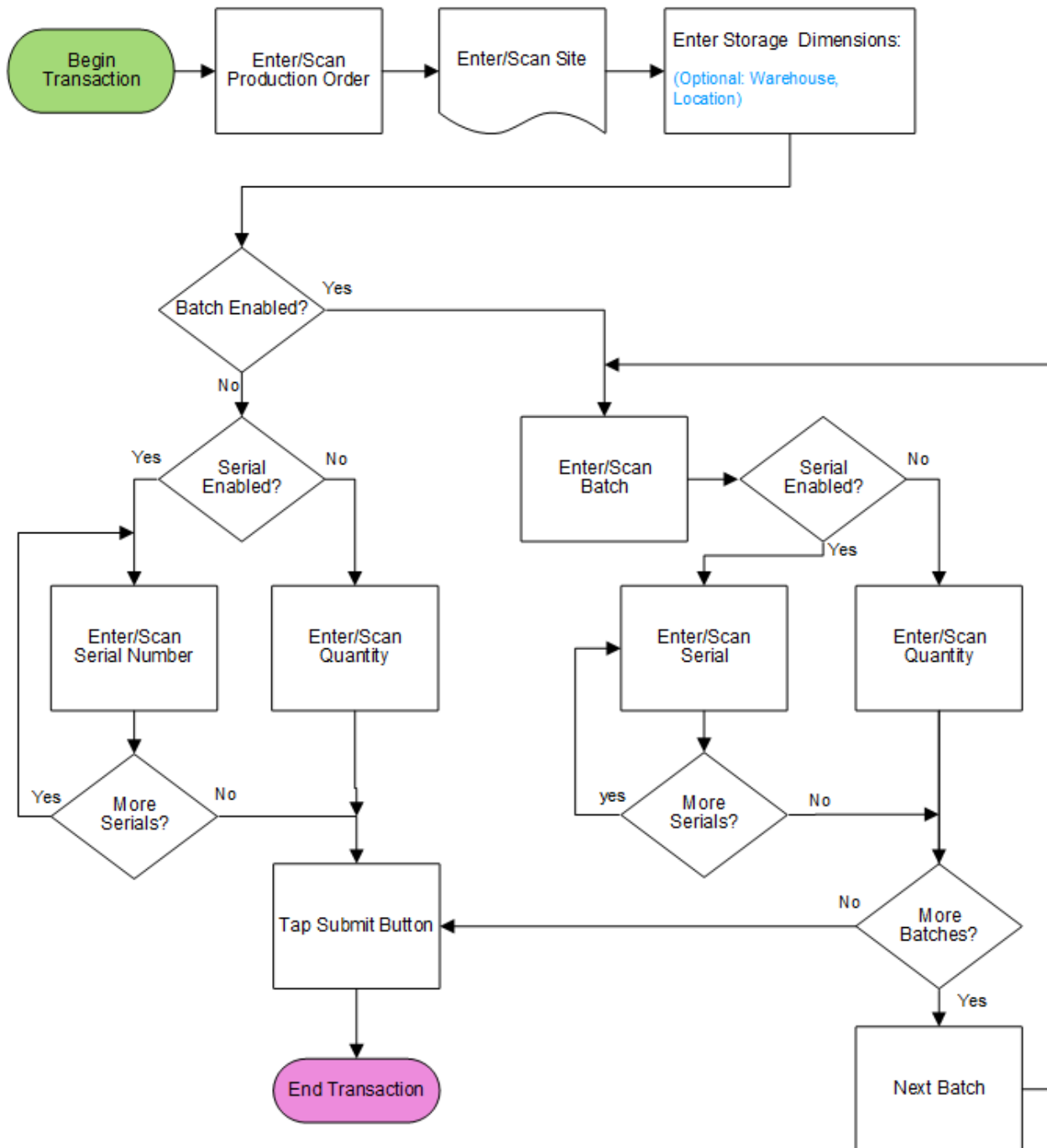
RFgen Functional Documentation
2021

RFgen provides its customers Microsoft Dynamics-validated, ready-to-use suites of Open Source applications and a development environment that can be used to create new apps or to modify existing apps.

This document describes the business workflow, technical information, and analysis questions for planning customizations to this application.



Microsoft Dynamics: Production – Finish as Backflush Workflow



FPRBKF400 – Finish as Backflush

This application posts a finished quantity to a production order then posts the consumed material quantity as a backflush using the ERP's default reservation properties.



First the user scans, enters, or searches for a Production Order. The production item displays.

The user scans, enters, or searches the site.

The user scans, enters, or searches the storage tracking dimension. (i.e. warehouse or location if its enabled.)

Note that production items can be organized by batch, batch then serial, serial only (no batch), or neither batch or serial.

If the item is neither batch nor serial, the user will be prompted to enter the quantity and tap the **Submit button** to post the transaction.

If the item is only batch-enabled, the user is prompted to enter or scan a batch (a number or any text) and then enter the quantity. Once the quantity is added the user can then repeat this process by tapping the **Next Batch button**.

If the item is batch-enabled and serial-enabled, after the batch is entered, the Serial field displays, and the user scans or enters a serial number. The serial number tracks multiple entries and displays the total received serial count. After the serial is entered, the user is given the option to: a) process more serials if needed; b) start another batch by tapping the **Next Batch**

button; or c) submit and process another item by tapping the **Submit** button.

If the item is only serial-enabled, then the serial field displays and the user is prompted to enter the serial and a serial count will display the updates. Once the user is done, a Submit button displays.

The user is done, the user taps the **Submit** button, and the *Report as Finish* document will post to the ERP. A *Picking List Registration* is created and posted consuming the material quantity.

At any time, the user can tap the return icon in the upper left corner of the application. Each tap removes the current entry and moves the cursor back to the previous prompt until the user reaches the menu.

Customization Considerations

If you are planning on creating a new version of this application or modifying it for a customer, consider asking these questions to help prepare your list of customization requirements.

1. Are there serial-controlled items?
2. Are there batch-controlled items?
3. Are there default sites/warehouses/etc. users are limited to at production?
4. Will pickers know of the Production Order number sourcing their picking route?
5. What is the business task or logic generating new serial/batch numbers at production confirmation?

