

DataMAX Software Group, Inc.
El Dorado Hills, CA 95762
USA

SAP WAREHOUSE MANAGEMENT – CYCLE COUNT

This application updates the warehouse module of SAP with the count of a line on an Inventory Document.

RFgen Functional Documentation
2021

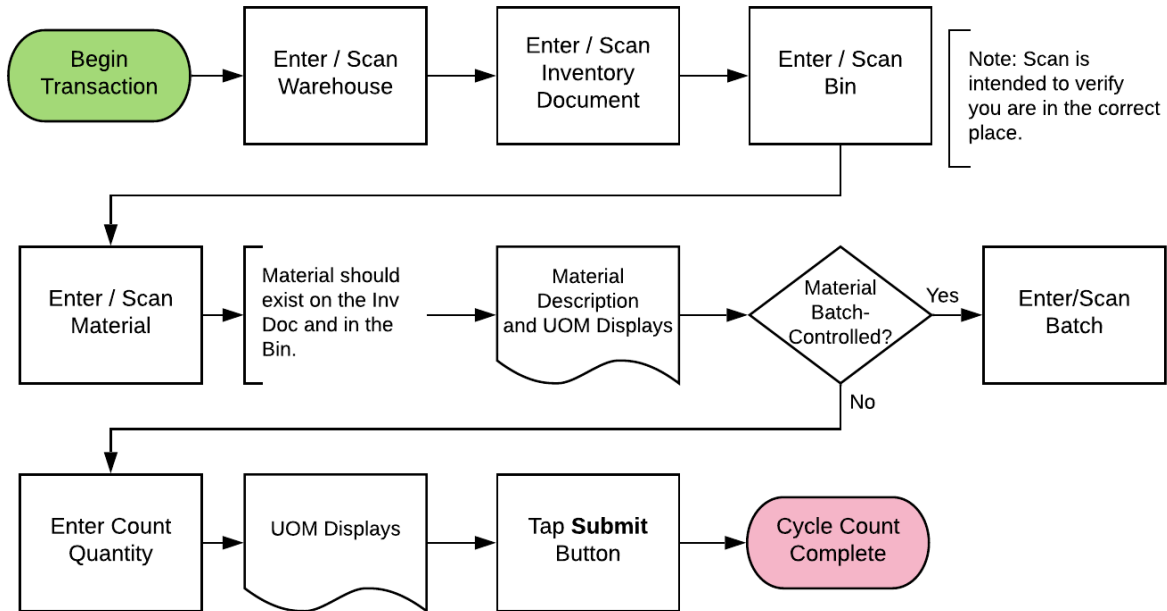
RFgen provides its customers SAP-validated, ready-to-use suites of Open Source applications and a development environment that can be used to create new apps or to modify existing apps.

This document describes the business workflow and technical information used in this application.

SAP[®] Certified
Integration with SAP Applications

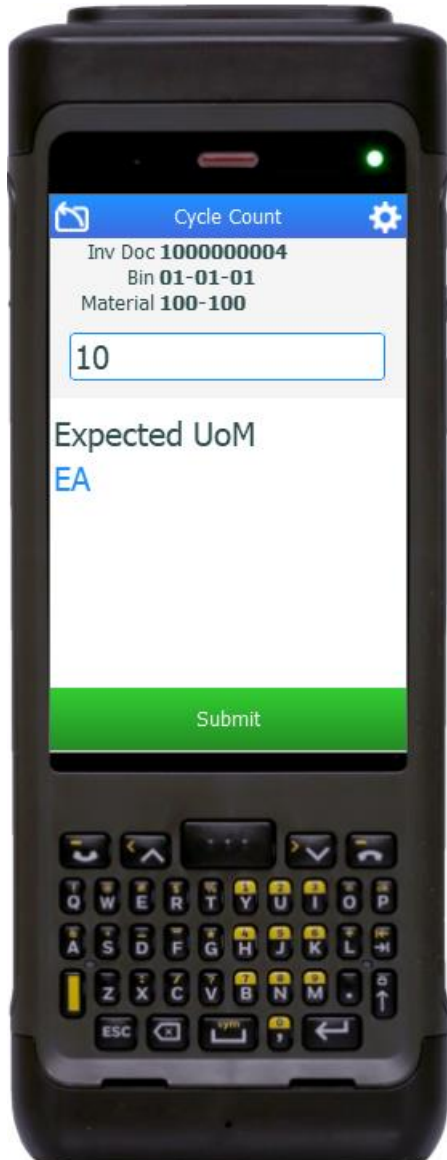
RFgen.

SAP: Warehouse Management (WM) – Cycle Count



FWHCC0200 WH – Cycle Count

This application updates the SAP warehouse module with the count of a line on an Inventory Document.



Description of Workflow

First the user scans or enters the warehouse if one is not defaulted automatically.

The user then scans, enters, or searches for an inventory document (Inv Doc) number.

The user scans, enters, or searches for a bin.

Ideally, the user scans this value to prove they are standing in the correct place. The bin entered must exist on the document.

The user scans, enters, or searches for a material (Mat). Again, this should be a scan to prove which item is being counted. The material must exist on the Inventory Document and in the specified Bin. The material's description and unit of measure will be displayed.

If the material is batch-controlled, the Batch field will be visible.

The user scans, enters, or searches for a batch number that is assigned to the material specified.

The user enters the count quantity. The unit of measure is also displayed.

The user taps the **Submit** button. This will post the count of this material to SAP and reset the prompt back to the Bin field.

The arrow in the upper left corner removes the current entry and moves the cursor back to the previous prompt until you reach the menu.



Technical Information

This lists the tables used for validations, searches and defaults by prompt.

Prompt	Table	Description
WH	T300T	Warehouse Master
Inv Doc	LINK / LINV	Warehouse Inventory Document Master
Bin		Must exist on the document
Mat	BAPI_MATERIAL_GET_DETAIL / BAPI_MATERIAL_GETLIST / MARA / MARC	Material Details
Batch	MCHB / LQUA	Warehouse Batch details
App Update	L_INV_COUNT_EXT	Warehouse Count Update

