

# SAP

## SALES ORDER – PICK CONFIRMATION

---

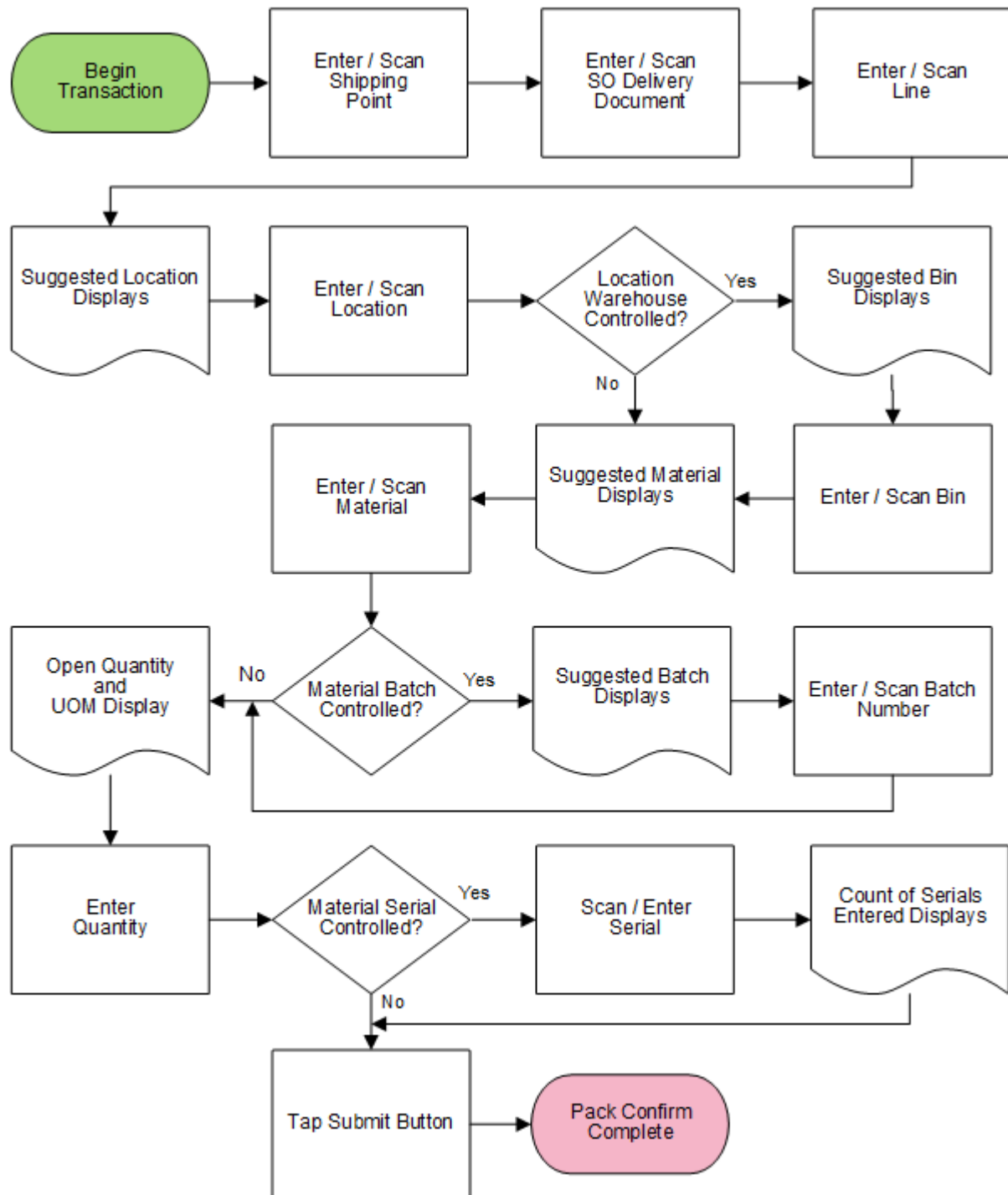
This application takes material out of inventory and issues it to a sales order.

2021

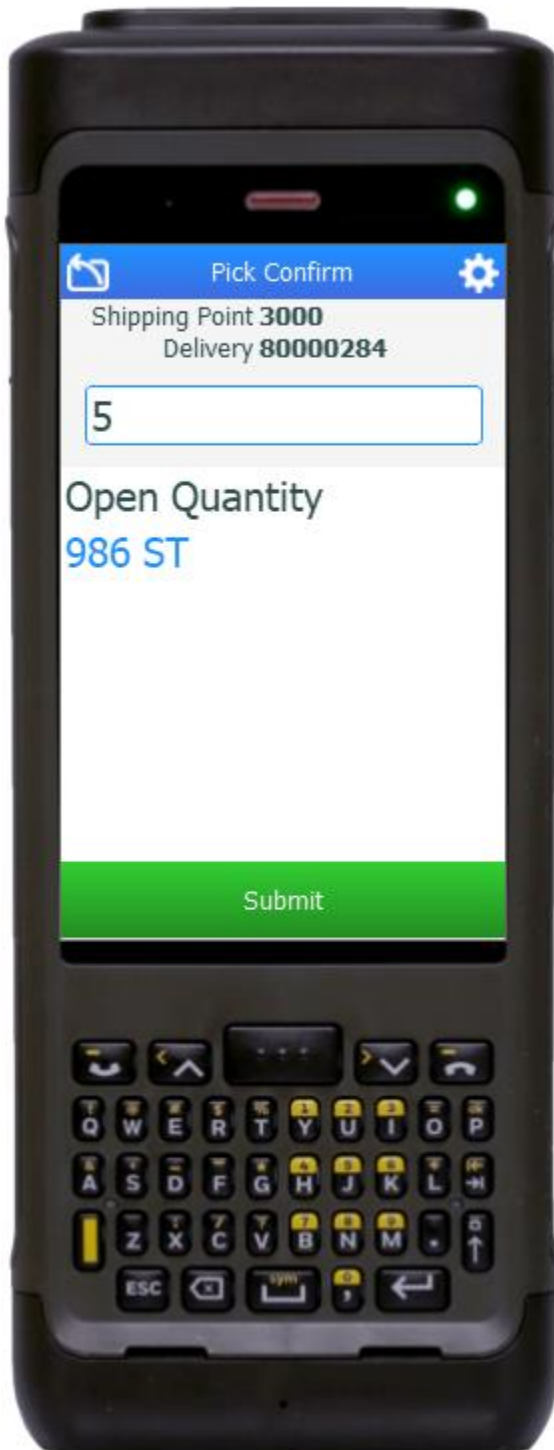
RFgen provides its customers SAP-validated, ready-to-use suites of Open Source applications that can be used to create new apps or to modify existing apps.

This document describes the business workflow and technical information used in this application.

## SAP: Sales Order (SO) – Pick Confirmation



## FSOPC0200 – SO Pick Confirmation



This application takes material out of inventory and issues it to a sales order.

### Description of Workflow

First the user scans, enters, or searches for a shipping point value.

The user then scans, enters, or selects a sales order Delivery document. The Delivery number, Pick Date and Status displays.

The user then scans, enters, or selects a line that has yet to be completely picked.

The suggested location where the materials is to be picked displays. The user scans or enters the suggested location only.

If the location is a warehouse-controlled the Bin field will appear. The Suggested Bin value also displays. The user scans or enters the bin.

The suggested material to be picked displays. The user then scans or enters a material.

If the material is batch-controlled, the Batch field will be visible. The user scans, enters, or searches for a batch number. The batch value is suggested but not required.

The open quantity and unit of measure (UOM) display. This will either be how much is on hand or what is left to pick, whichever is less. The user enters the pick quantity.



If the material is serial-controlled, the user scans or enters serial numbers. A counter tracking the number of serial numbers entered displays.

When the user is done, the user taps the **Submit** button. The **Submit** button posts the pick of this material to SAP and the application resets.

The arrow in the upper left corner removes the current entry and moves the cursor back to the previous prompt until the user reaches the menu.

## Technical Information

This lists the tables used for validations, searches, and defaults by prompt if applicable.

Prompt	Table	Description
Shipping Point	TVST	Shipping Point Master
Delivery	LIKPUK view	Delivery Details
Delivery Line		Must exist on the Delivery
Locn		Must exist on the Line
Bin		Must exist on the Line
Mat		Must exist on the Line
Batch	MCHB / LQUA	IM / WM Batch Details
Qty	MARD / MCHB / MSPR / MSKA / LQUA	IM / WM Quantity levels
Serial	SER05 / OBJK / EQUI / JEST	Serial Details
App Update	SD_DELIVERY_UPDATE_PICKING_1	Delivery Pick Update

