

DataMAX Software Group, Inc.
El Dorado Hills, CA 95762
USA

SAP

SALES ORDER – PACK DELIVERY

CONFIRMATION

This application takes material and places it into specific handling units.

2021

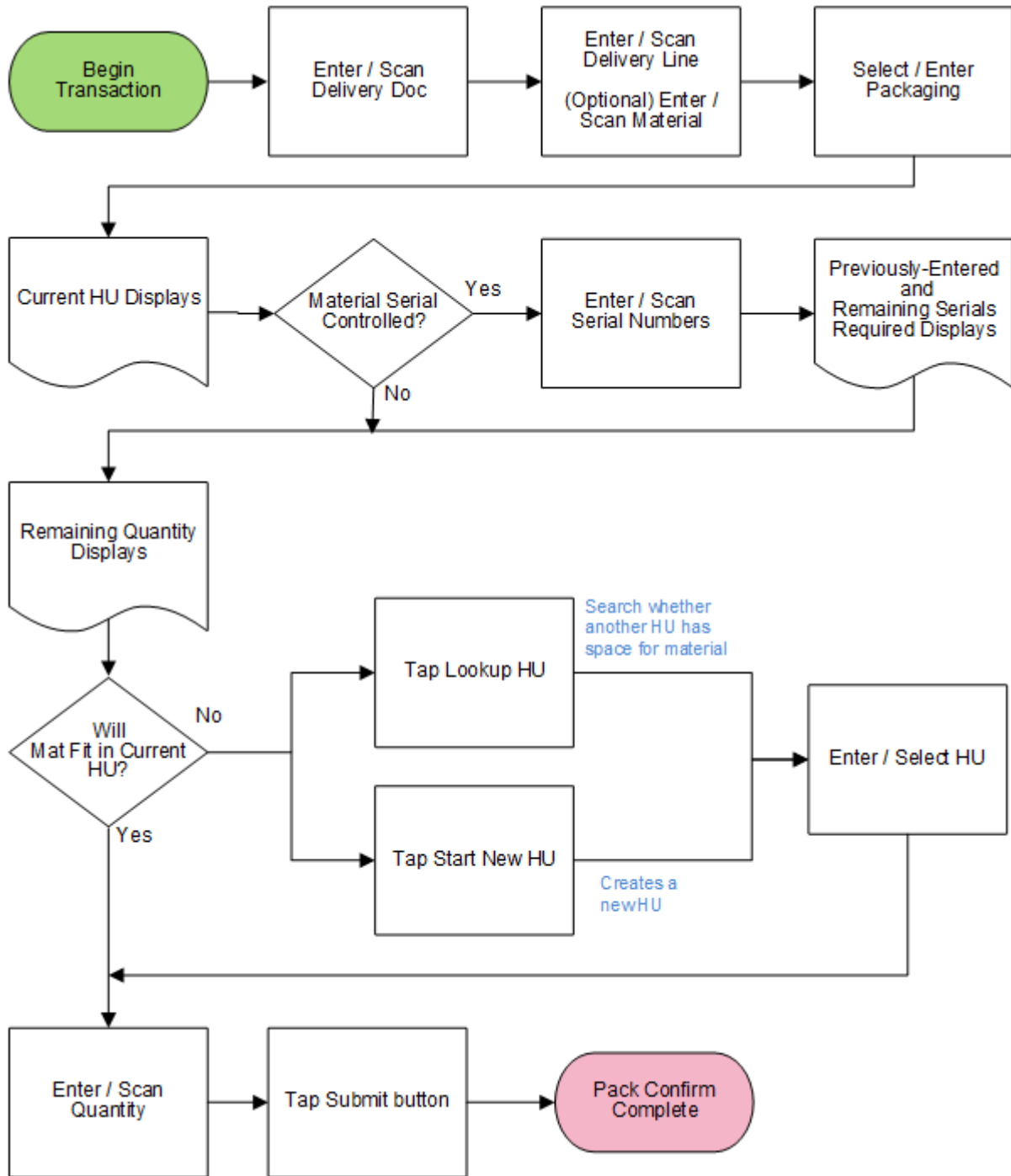
RFgen provides its customers SAP-validated, ready-to-use suites of Open Source applications that can be used to create new apps or to modify existing apps.

This document describes the business workflow and technical information used in this application.

SAP[®] Certified
Integration with SAP Applications

RFgen.

SAP: Sales Order (SO) – Pack Delivery Confirmation



FSOPA0220 – Pack Delivery Confirmation



This application takes material and places it into specific handling units.

Description of Workflow

First the user scans, enters, or selects a sales order Delivery document. The Delivery number displays.

Next, the user scans, enters, or selects a line that has yet to be completely packed, or enters a material. The user can optionally enter / scan in the material. If the user entered /scanned the material, the application finds the Delivery line for the specified material.

A list of different types of packaging containers displays.

The user selects the packaging to be used for shipping the material.

The selected packaging displays as **Current HU** and the number associated with it.

If the material is serial-controlled, the user scans or enters the serial numbers. Previously entered serial numbers for reference display. When the user enters / scans in serials, the count up to the required amount also displays.

The **Remaining Quantity** of material to be packed displays below the **Quantity** field.



The user decides how much of the material can be packed into the current HU (packaging container).

If the current HU doesn't have enough room, the user can tap the **Lookup HU** button, and see if another HU has room for the material for the delivery order. If it does, (Status is "Open") the user taps the **Add to HU** button and this HU becomes the Current HU.

Alternatively, the user can tap the **Start New HU** button to create a new HU, and this new HU will become the current HU.

Note that a material can be unpacked from an HU by tapping the **UnPack Item** button.

Next the user enters the quantity of material to be packed in the HU in the **Quantity** field.

If the user has completed the order, the user can tap the **Submit** button. The transaction will be validated, and an update confirming the packaging for the delivery order will be sent to SAP.

If the user is not ready to complete the order, and wants to continue packing other lines, the user selects the line to be packed, and the application resets for that line.

The arrow in the upper left corner of the screen removes the current entry and moves the cursor back to the previous prompt until the user reaches the menu.



Technical Information

This lists the tables used for validations, searches and defaults by prompt if applicable.

Prompt	Table	Description
Delivery	LIPSUP view	Delivery Details
Delivery Line		Must exist on the Delivery
Pack Material	MARA	Check Pack Material flag
Qty		Must be numeric
Serial	SER05 / OBJK / EQUI / JEST	Serial Details
App Update	BAPI_HU_CREATE / BAPI_HU_CHANGE_HEADER / WS_DELIVERY_UPDATE	Delivery Pack Update

