

# SAP

## PRODUCTION ORDER – ORDER CONFIRMATION

---

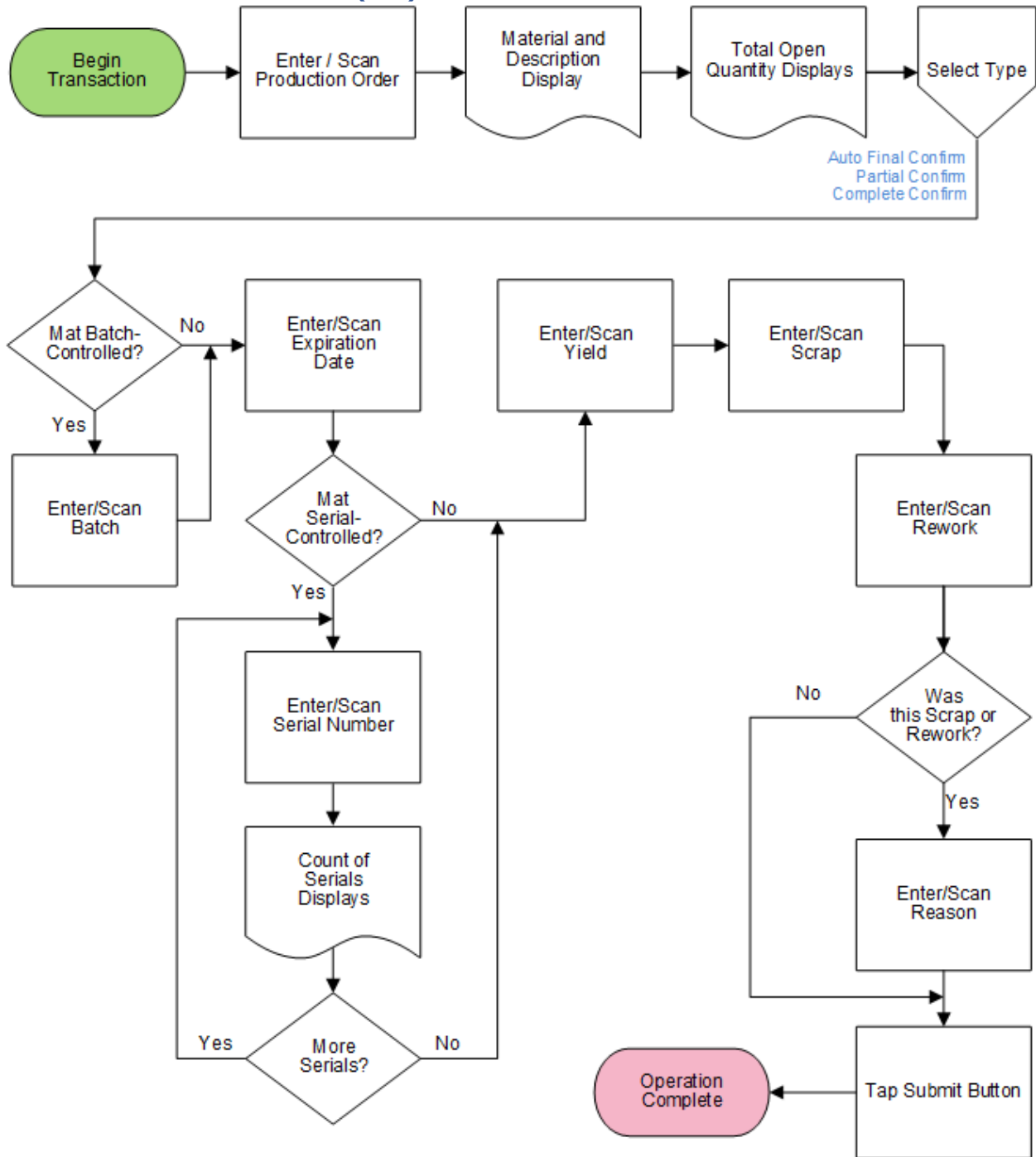
This application completes a production order and sets the order to either a partial completion or final completion.

RFgen Functional Documentation  
2021

RFgen provides its customers SAP-validated, ready-to-use suites of Open Source applications and a development environment that can be used to create new apps or to modify existing apps.

This document describes the business workflow and technical information used in this application.

# SAP Production Order (PR) – Order Confirmation



## FPRRC0200 PR – Order Confirmation



This application completes a production order and sets the order to either a partial completion or final completion.

### Description of Workflow

First user scans or enters a released but not finalized production order.

The material, material's description, and total open quantity are displayed.

The user checks one of the confirmation boxes: Partial Confirm, Final Confirm, or Auto Final Confirm where SAP determines the status based on the quantities yielded. Auto Final Confirm is the default.

If the material is batch-controlled, the Batch field will display. If the material is serial-controlled, the Serial field will display.

The user scans, enters, or searches for a batch number that is assigned to the material specified.

The user enters the expiration date of the material created at this operation if necessary.

If the material is serial-controlled, the user scans or enters serial numbers from list. A counter tracking the number of serial numbers entered displays. The prompt will remain in the Serial field until the user taps the **Next** button.



Then the user enters the yield for this operation. The value defaults to the expected quantity.

The user can enter any scrap quantity if any is produced, but the default is zero.

The user can enter any rework quantity if any is produced but the default is zero.

If the quantity is a scrap or rework, the Reason field is displayed. The user enters the Reason code.

After the last visible field is entered, the **Submit** button displays. The **Submit** posts the completed order to SAP and resets the application.

The arrow in the upper left corner removes the current entry and moves the cursor back to the previous prompt until the user reaches the menu.



## Technical Information

This lists the tables used for validations, searches, and defaults by prompt.

Prompt	Table	Description
Prod Ord	BAPI_PRODORD_GET_DETAIL	Production Order Details
Conf Type	Defaulted in code	Auto Confirm, Final Confirm, or Partial Confirm
Batch	MCH1 / MCHA / MCHB	match the batch preassigned to the Prod Order.
ExpDate	MCH1 / MCHA / MCHB	Expire Date / Best Before Date
Serial	SER05 / OBJK / EQUI / JEST	Serial Details
Yield	AFRU	Must be numeric
Scrap	AFRU	Must be numeric
Rework	AFRU	Must be numeric
Reason	TRUGT	Reason Master
App Update	BAPI_PRODORDCONF_CREATE_TT / BAPI_TRANSACTION_COMMIT / BAPI_GOODSMVT_CREATE	Production Order Confirmation, Goods Receipt.