

# SAP

## PRODUCTION ORDER – OPERATION

### CONFIRMATION

---

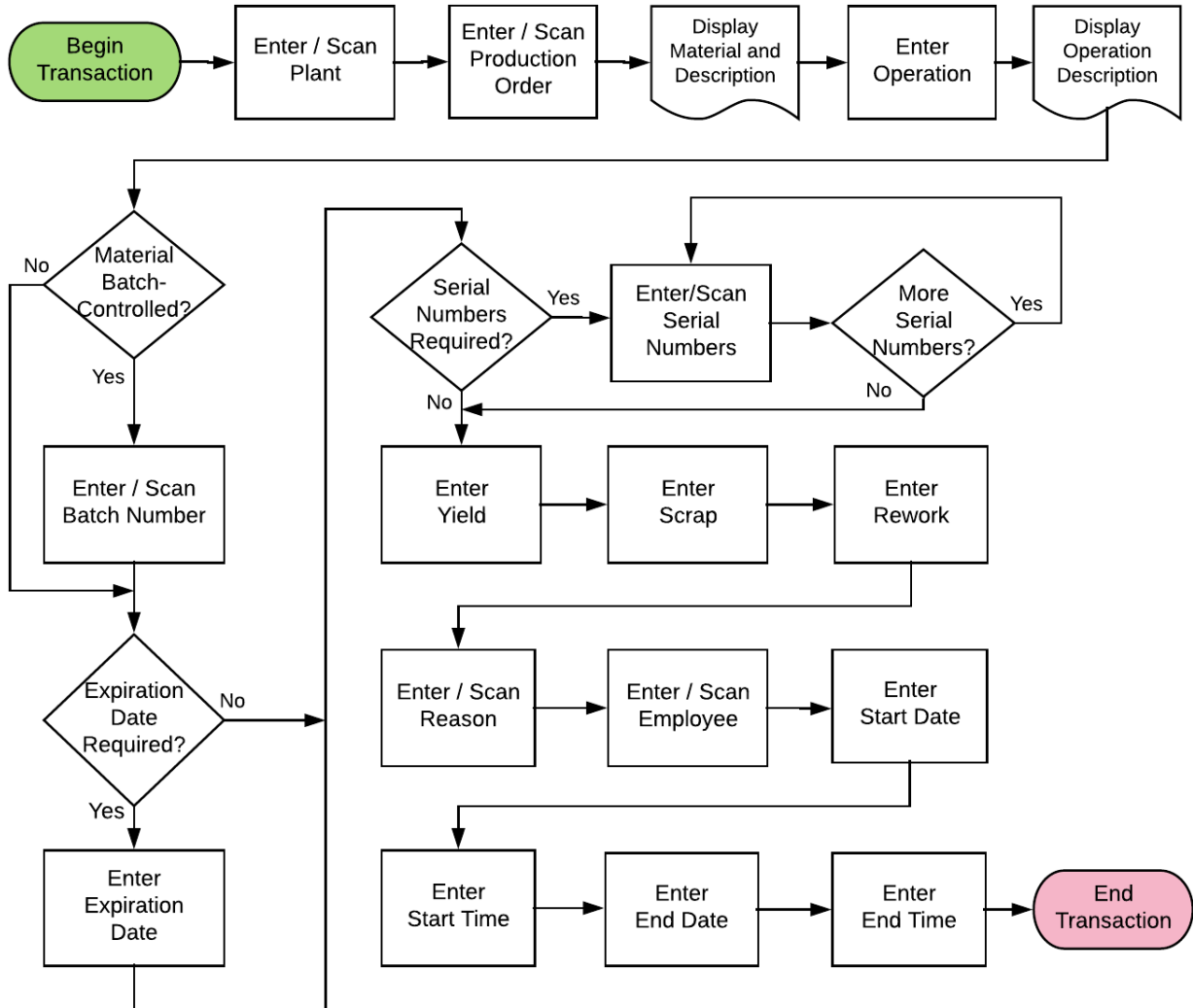
This application confirms one operation in the manufacturing process and records the quantity yielded.

RFgen Functional Documentation  
2021

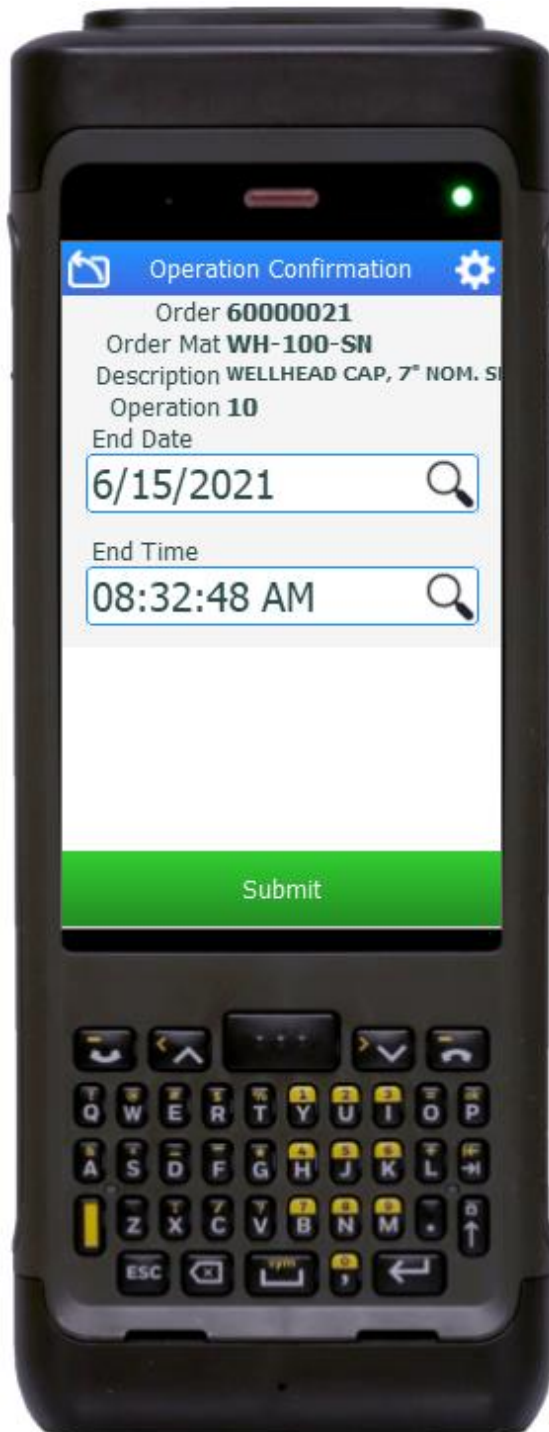
RFgen provides its customers SAP-validated, ready-to-use suites of Open Source applications and a development environment that can be used to create new apps or to modify existing apps.

This document describes the business workflow and technical information used in this application.

## SAP Production Order (PR) – Operation Confirmation



## FPROC0200 PR – Operation Confirmation



This application confirms one operation in the manufacturing process and records the quantity yielded.

### Description of Workflow

First the user scans, enters, or searches for a plant value if one is not defaulted from the user's profile.

The user then scans, enters, or searches for a released but not finalized production order.

The production order material (Order Mat) and description display.

The user scans, enters, or searches for the operation for which the yield is being produced.

If the material is batch-controlled, the Batch field will be visible. The user scans, enters, or searches for a batch number for the material specified.

The user enters the expiration date of the material created in this operation if necessary.

If the material is serial-controlled, the user scans or enters serial numbers from a list. A counter tracking the number of serial numbers entered displays. The prompt stays in the Serial field until the user taps the **Next** button.

The user enters the yield for this operation.

The user can enter any scrap quantity if any is produced but the default is zero.

The user can enter the rework quantity if any is produced but the default is zero.

If the scrap or rework value were entered, the user enters a reason code.

The user enters their employee ID.

The user enters the start date formatted and time of the operation.

The user enters the end date and time.

The user taps the **Submit** button which posts the quantity results of this operation to SAP and resets the application.

The arrow icon in the upper left corner removes the current entry and backs up to the previous prompt.



## Technical Information

This lists the tables used for validations, searches and defaults by prompt.

<b>Prompt</b>	<b>Table</b>	<b>Description</b>
Plant	T001W	Plant Master
Prod Ord	BAPI_PRODORD_GET_DETAIL	Production Order Details
Oper	BAPI_PRODORD_GET_DETAIL	Operation Details
Batch	MCH1 / MCHA / MCHB	match the batch preassigned to the Prod Order.
ExpDate	MCH1 / MCHA / MCHB	Expire Date / Best Before Date
Serial	SER05 / OBJK / EQUI / JEST	Serial Details
Yield		Must be numeric
Scrap		Must be numeric
Rework		Must be numeric
Reason	TRUGT	Reason Master
Employee	BAPI_EMPLOYEE_GETDATA	Employee details
App Update	BAPI_PRODORDCONF_CREATE_TT / BAPI_TRANSACTION_COMMIT / BAPI_GOODSMVT_CREATE	Production Order Confirmation, Goods Receipt.

