

SAP PRODUCTION ORDER – ISSUE TO PRODUCTION ORDER

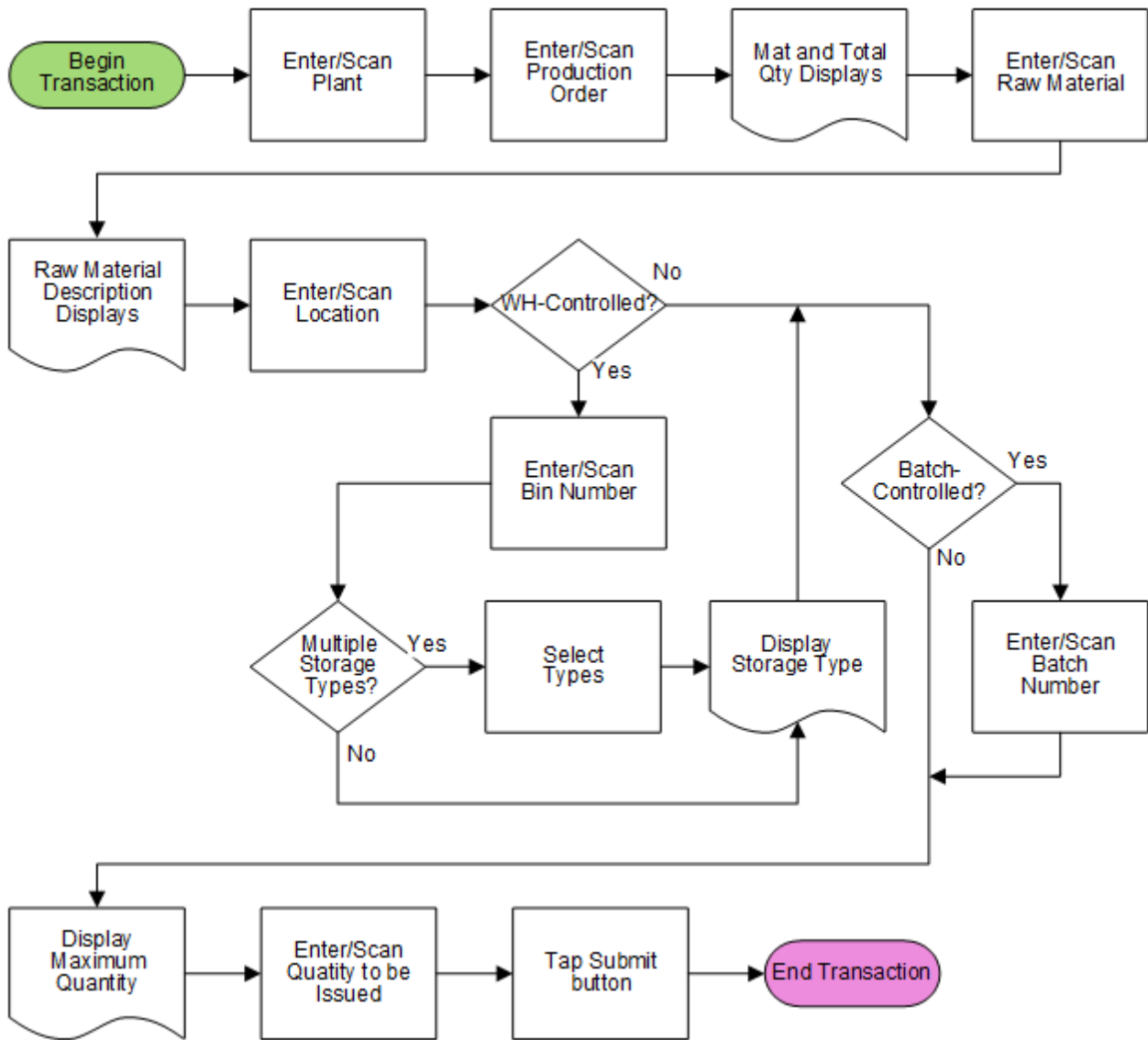
This application takes material out of inventory and issues it to a production order.

2021

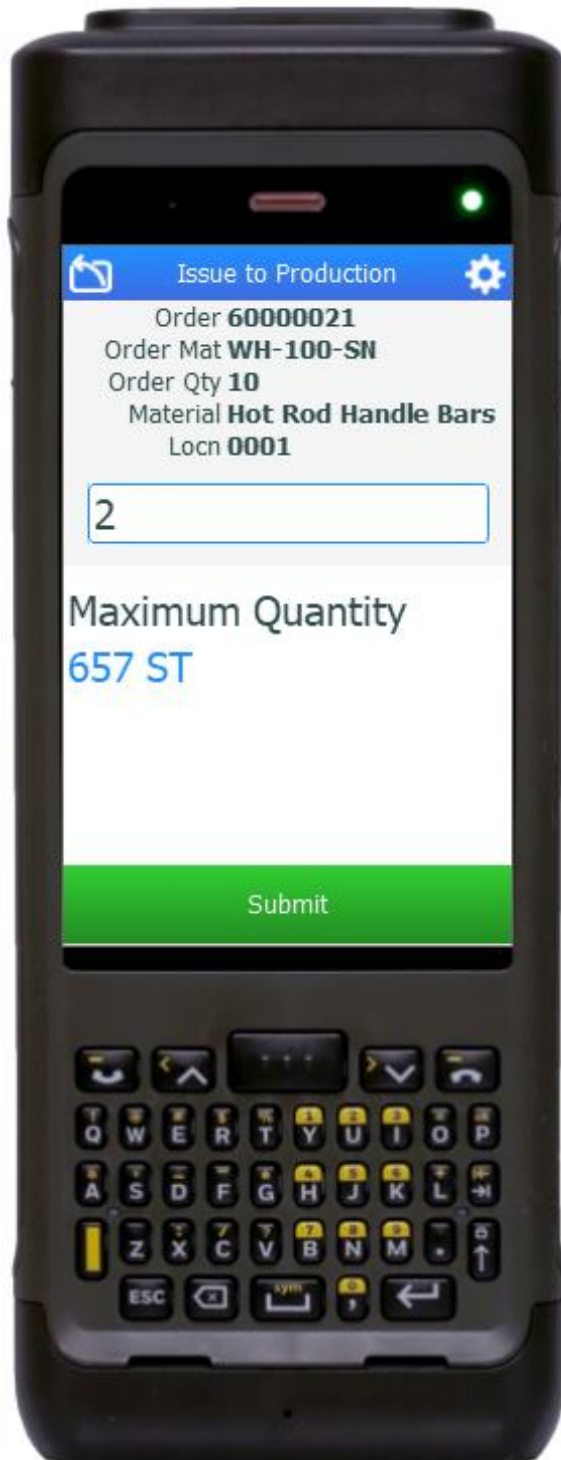
RFgen provides its customers SAP-validated, ready-to-use suites of Open Source applications that can be used to create new apps or to modify existing apps.

This document describes the business workflow and technical information used in this application.

SAP: Production Order (PR) – Issue to Production Order



FPRCW0200 – Issue to Production



This application takes material out of inventory and issues it to a production order.

Description of Workflow

First the user scans, enters, or searches for a plant value if one does not default from the user profile.

The user then scans, enters, or searches for a released but not finalized production order.

The material and the total quantity of the material being produced is displayed.

The user then scans, enters, or searches for a raw material. Searching for a material will display the materials that belong to the production order. The material's description will be displayed.

The user scans, enters, or searches for a location where the material exists.

If the location is a warehouse-controlled location the Bin and Type fields will appear. The user scans, enters, or searches for a bin number that is assigned to the material. If more than one storage type exists, the user will be prompted to pick one from a list.

If the material is batch-controlled, the Batch field will be visible. The user scans, enters, or searches for a batch number that is assigned to the material specified.



The maximum quantity available of the material is shown. The user enters the quantity they wish to issue.

The **Submit** button will post the issue of this material to SAP and reset the application.

The arrow in the upper left corner removes the current entry and moves the cursor back to the previous prompt until the user reaches the menu.



Technical Information

This lists the tables used for validations, searches and defaults by prompt if applicable.

Prompt	Table	Description
Plant	T001W	Plant Master
Prod Order	AFPO	Production Order Details
Mat	BAPI_MATERIAL_GET_DETAIL / BAPI_MATERIAL_GETLIST / RESB / MARA / MARC	Material Details + Reservations
Locn	BAPI_MATERIAL_GETLIST / T320 / T001L / T159L / T156	Location Details
Bin	LAGP / LQUA	IM / WM Bin Details
Type	LAGP	Bin Type
Batch	MCHB / LQUA	IM / WM Batch Details
Qty	MARD / MCHB / MSPR / MSKA / LQUA	IM / WM Quantity levels
App Update	BAPI_GOODSMVT_CREATE	Movement Update

