

# SAP PRODUCTION ORDER – COMPONENT SCRAP

---

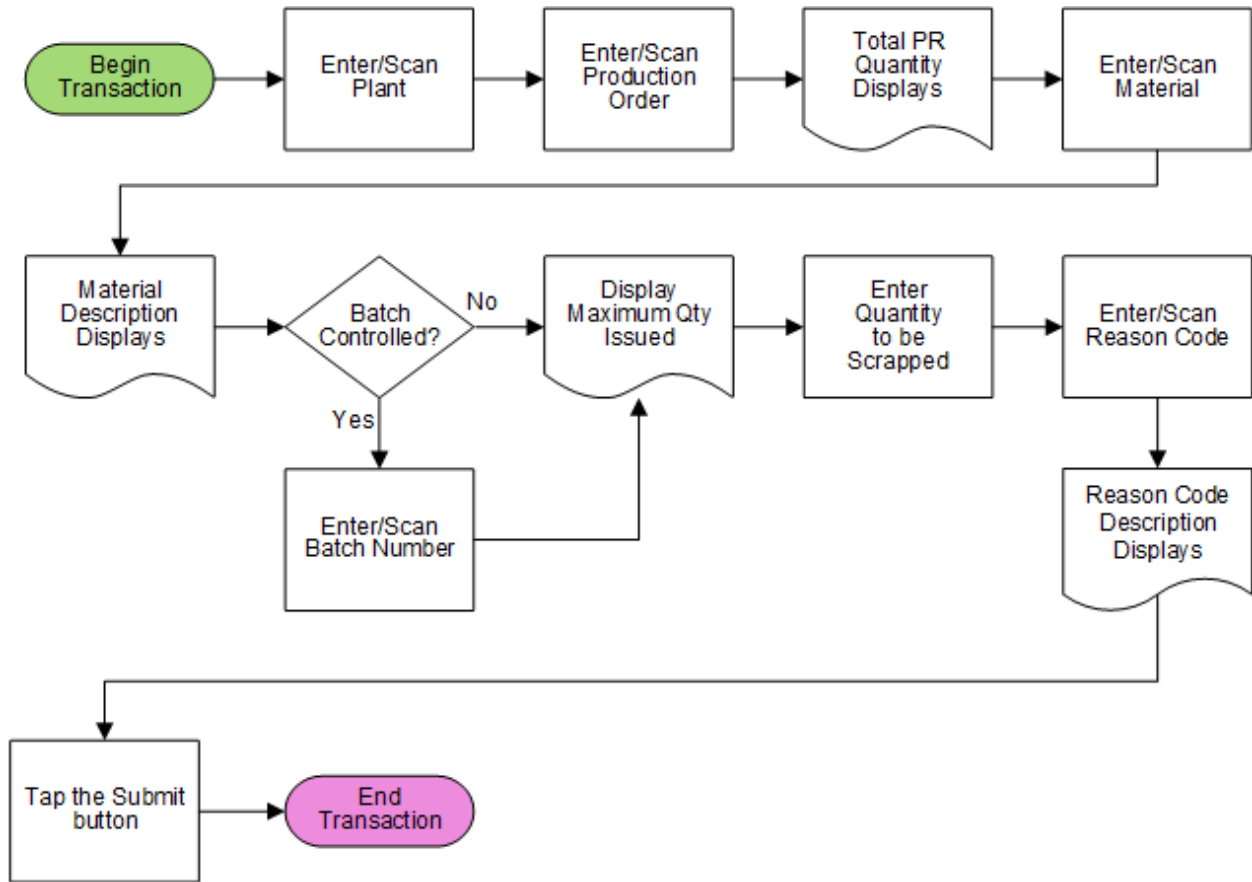
This application withdraws a component from use in a production order (PR) and writes it off as scrap.

RFgen Functional Documentation  
2021

RFgen provides its customers SAP-validated, ready-to-use suites of “Open Source” applications and a development environment that can be used to create new apps or to modify existing apps.

This document describes the business workflow and technical information used in this application.

## SAP: Production Order (PR) – Component Scrap



## FPRCS0200 – Component Scrap



This application withdraws a component from use in a production order and writes it off as scrap.

### Description of Workflow

First the user scans, enters, or searches for a plant value if one is not defaulted from the user's profile.

The user then scans, enters, or searches for a released but not finalized production order.

The total quantity of the material being produced displays.

The user then scans, enters, or searches for a material.

A search option listing the materials associated to the order displays.

The material's description displays.

If the material is batch-controlled, the Batch field will be visible.

The user scans, enters, or searches for a batch number that is assigned to the material.

The maximum quantity of the material issued to the order displays.

The user enters the quantity to be scrapped.



The user scans, enters, or searches for a reason code describing the purpose for scrapping the material. A description of the reason code is displayed.

The user taps the **Submit** button which posts the scrap of this material to SAP and resets the application.

The arrow in the upper left corner removes the current entry and moves the cursor back to the previous prompt until the user reaches the menu.

## Technical Information

This lists the tables used for validations, searches and defaults by prompt if applicable.

| Prompt     | Table                                                         | Description              |
|------------|---------------------------------------------------------------|--------------------------|
| Plant      | T001W                                                         | Plant Master             |
| Prod Order | AFPO                                                          | Production Order Details |
| Mat        | RESB /<br>BAPI_MATERIAL_GET_DETAIL /<br>BAPI_MATERIAL_GETLIST | IM / WM Material Details |
| Batch      |                                                               | Must be on the order     |
| Qty        |                                                               | Must be numeric          |
| Reason     | T157E                                                         | Reason Master            |
| App Update | BAPI_GOODSMVT_CREATE /<br>BAPI_TRANSACTION_COMMIT             | Movement Update          |

