

SAP

INVENTORY MANAGEMENT – LOCATION INQUIRY BY MATERIAL

This application helps you locate material and view the quantity available in inventory by inquiring the material for a specified plant.

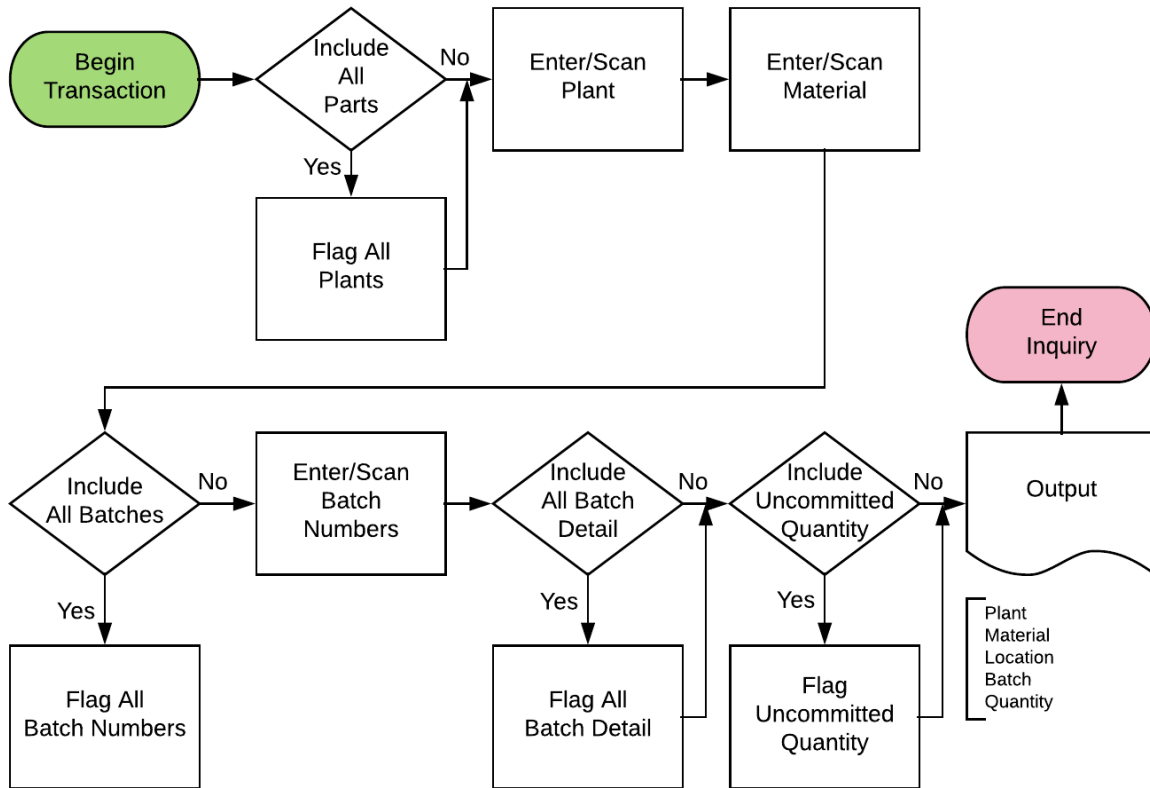
RFgen Functional Documentation

2021

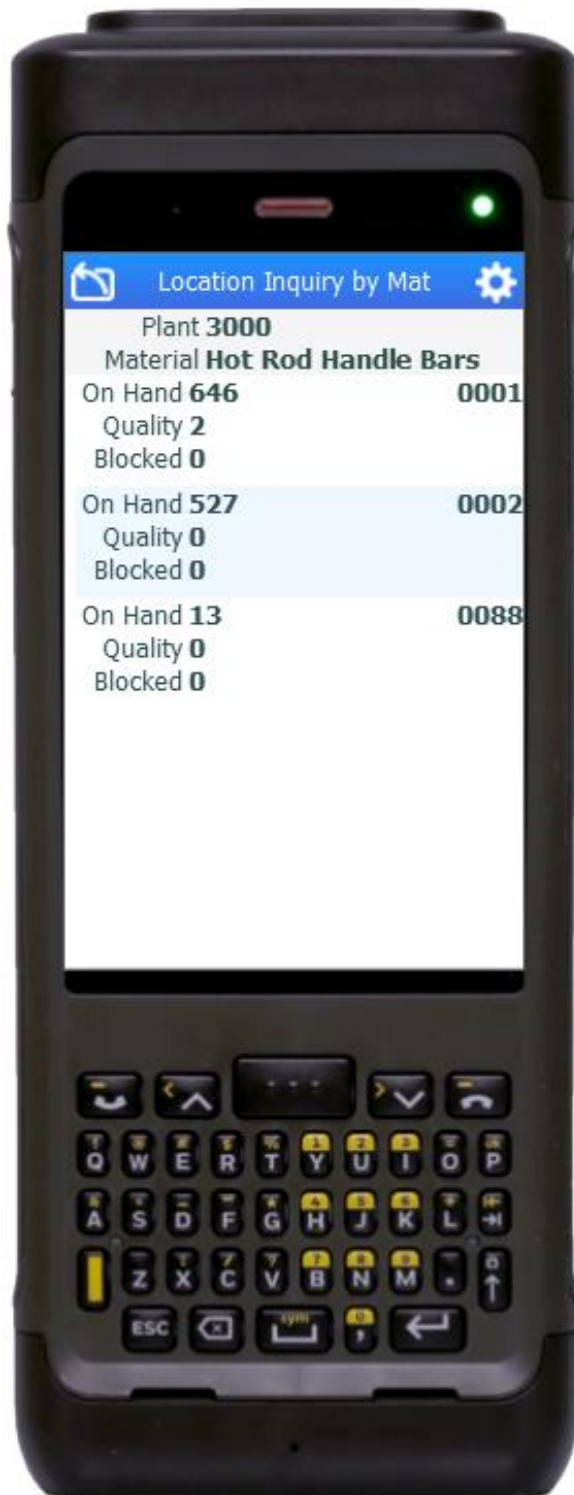
RFgen provides its customers SAP-validated, ready-to-use suites of “Open Source” applications and a development environment that can be used to create new apps or to modify existing apps.

This document describes the business workflow and technical information used in this application.

SAP: Inventory Management (IM) – Location Inquiry by Material



FIMQI0200 IM – Location Inquiry by Material



This application helps you locate material and view the quantity available in inventory by inquiring the material for a specified plant.

Description of Workflow

First the user scans, enters, or searches the plant if one does not default from the user profile automatically.

Then the user then scans, enters, or searches for a material.

To search for a material, the first one or more characters must be entered to reduce the search list results.

The material's description displays. If the material is batch-controlled, the Batch field will be visible. The user scans, enters, or searches for a batch number that is assigned to the material specified.

A list of material locations and the quantities for unrestricted, quality hold, and blocked stock display.

To scroll the list, the user flicks the screen.

The arrow in the upper left corner undoes the current entry and moves the cursor back to the previous prompt until the user reaches the menu.



Technical Information

This lists the tables used for validations, searches and defaults by prompt.

Prompt	Table	Description
Plant	T001W	Plant Master
Mat	BAPI_MATERIAL_GET_DETAIL / BAPI_MATERIAL_GETLIST / MARA / MARC	Material Details
Batch	MCHB / LQUA	IM / WM Batch Details
Lookup	MARD / MCHB	Location Details

