

SAP INVENTORY MANAGEMENT – ISSUE TO SCRAP

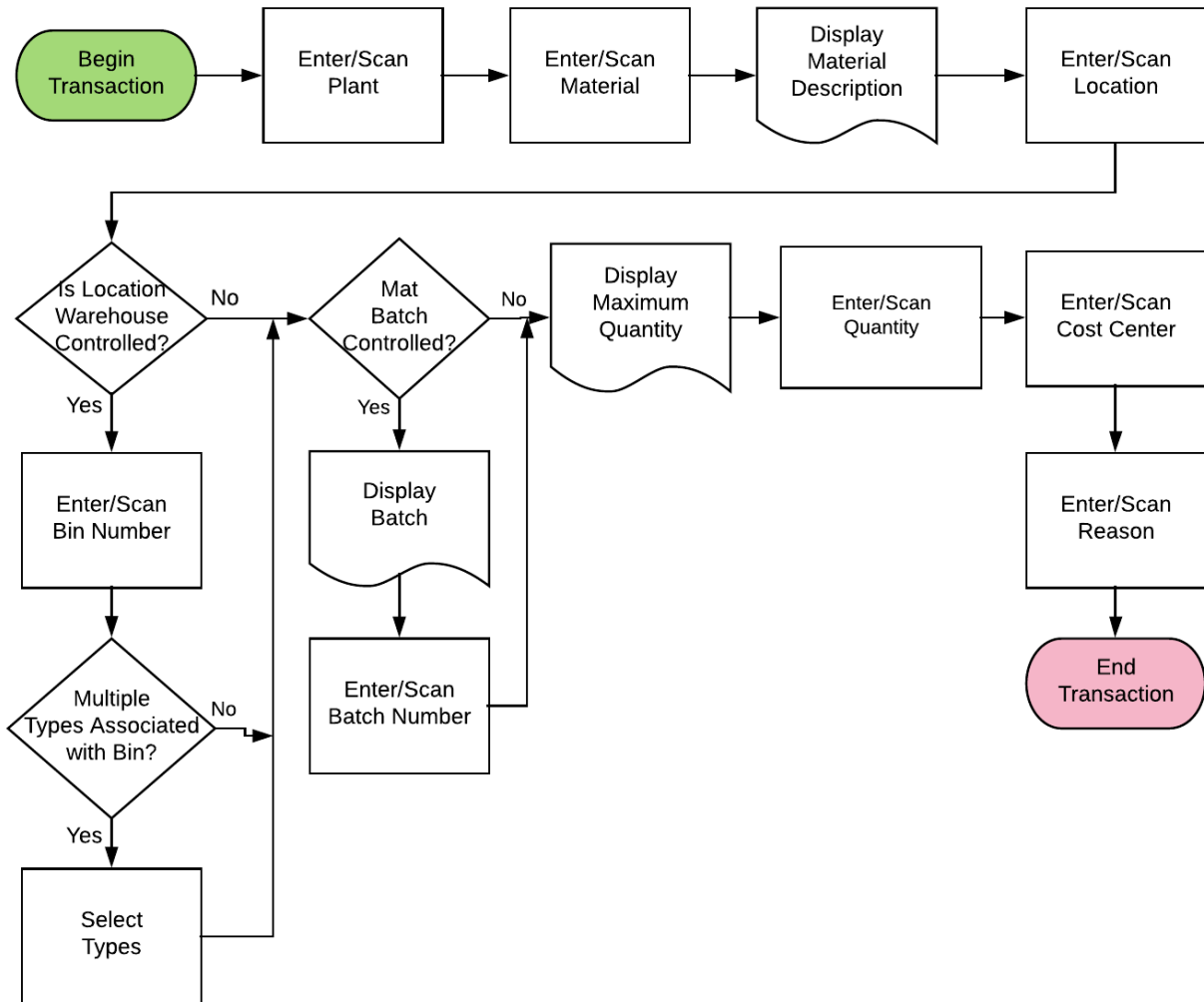
This application issues a material to or from inventory cost center. The menu choices include issuing to a scrap cost center and reversing an issue from a scrap cost center.

RFgen Functional Documentation
2021

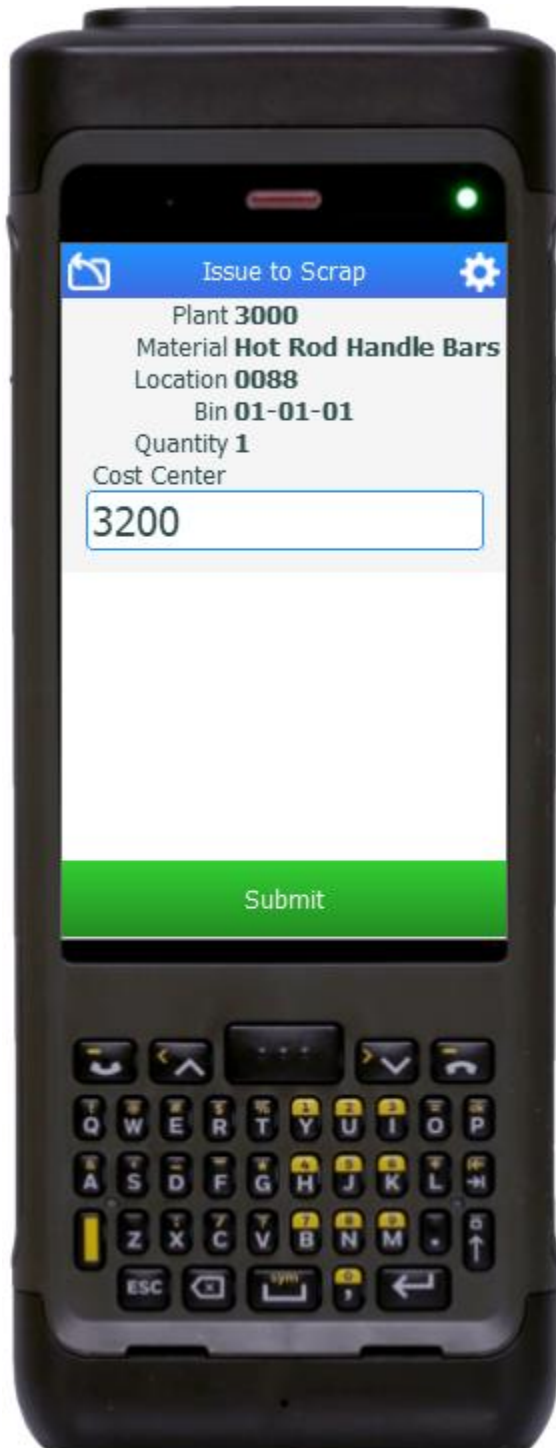
RFgen provides its customers SAP-validated, ready-to-use suites of Open Source applications and a development environment that can be used to create new apps or to modify existing apps.

This document describes the business workflow and technical information used in this application.

SAP: Inventory Management (IM) – Issue to Scrap



FIMII0215 IM – Issue to Scrap



This application issues a material to or from inventory cost center. The menu choices include issuing to a scrap cost center and reversing an issue from a scrap cost center.

Description of Workflow

First the user scans, enters, or searches for a plant if one does not default from the user profile.

The user enters or searches for a material. To search for a material, the user taps the search icon in the Material field and enters the first few characters to filter the search results. If the material is found, the user selects it, and the material's description will be displayed.

The user scans, enters, or searches for a location where the material exists. If the location is a warehouse-controlled location the Bin and Type fields will appear.

The user scans, enters, or searches for a Bin number that is assigned to the material specified.

If there is more than one Type associated with that bin, the user will be prompted to pick one from a list.

If the material is batch-controlled, the Batch field will be visible.



The user scans, enters, or searches for a batch number that is assigned to the material specified.

The maximum quantity available of the material is shown based on Plant, Location, Bin, and / or Batch values.

The user enters the quantity they wish to issue.

The user scans, enters, or searches for a Cost Center. After validation the Submit button displays unless a reason code is required.

The user taps the **Submit** button. The Submit button posts the issue of this material to SAP and resets the application.

The arrow in the upper left corner undoes the current entry and moves the cursor back to the previous prompt until you reach the menu.



Technical Information

This lists the tables used for validations, searches and defaults by prompt.

Prompt	Table or Business Function	Description
Plant	T001W	User Property "PLANT"
Mat	BAPI_MATERIAL_GET_DETAIL / BAPI_MATERIAL_GETLIST / MARA / MARC	Material Details
Locn	BAPI_MATERIAL_GETLIST / T320 / T001L / T159L / T156 / MARD / MCHB / MSPR / MSKA / LQUA	IM / WM Location Details
Bin	LAGP / LQUA / MARD	IM / WM Bin Details
Type	LAGP	Bin Type
Batch	MCHB / LQUA	IM / WM Batch Details
Qty		Must be numeric
Cost Ctr	BAPI_COSTCENTER_GETLIST	Cost Center Details
Rsn	T157E	Reason for Movement
App Update	BAPI_GOODSMVT_CREATE	Movement Update

Customization Considerations

If you are planning on creating a new version of this application or modifying it for a customer, consider asking these questions to help prepare your list of customization requirements.

1. Is the Location Ware-House controlled?
2. Is the Reason for Movement required in your process?

