

SAP INVENTORY MANAGEMENT – ISSUE TO RESERVATION

This application will issue a material out of inventory to a Reservation.

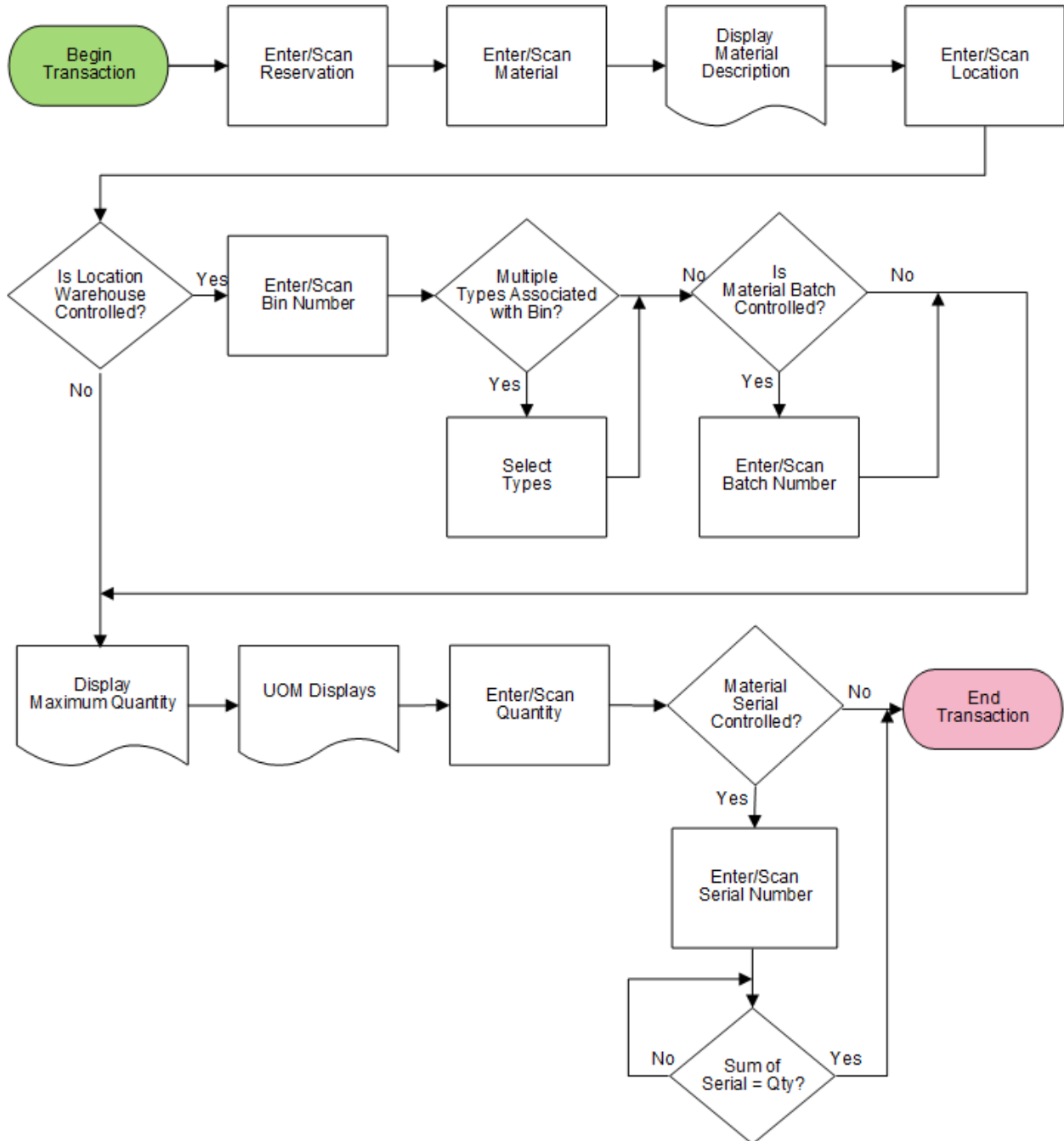
RFgen Functional Documentation

2021

RFgen provides its customers SAP-validated, ready-to-use suites of Open Source applications and a development environment that can be used to create new apps or to modify existing apps.

This document describes the business workflow and technical information used in this application.

SAP: Inventory Management (IM) – Issue To Reservation



FIMII0230 IM – Issue to Reservation



This application will issue a material out of inventory to a Reservation.

Description of Workflow

First the user scans or enters a reservation.

The user then scans, enters, or searches for a material. To search for a material, the first one or more characters must be entered to reduce the search list results. The material's description will be displayed.

The user scans, enters, or searches for a location where the material exists. If the location is a warehouse-controlled location the Bin and Type fields display.

The user scans, enters, or searches for a Bin number that is assigned to the material specified.

If there is more than one bin type associated with that bin, the user will be prompted to pick one from a list. Otherwise the bin type is defaulted.

If the material is batch-controlled, the Batch field will be visible. The user scans, enters, or searches for a batch number that is assigned to the material.

The maximum quantity available for that batch and its unit of measure (UOM) displays.

The user enters the quantity they wish to issue in the Quantity field.

If the material is serial-controlled, the Serial field will be visible. The user enters or scans serials. The count of serials must equal to the quantity entered in the Quantity field. When the count of serials equals the Quantity entered, the **Submit** button will display.

The user taps the **Submit** button and RFgen posts the issue of this material to SAP and resets the application.

The arrow in the upper left corner undoes the current entry and moves the cursor back to the previous prompt until the user reaches the menu.

Technical Information

This lists the tables used for validations, searches and defaults by prompt.

Prompt	Table	Description
Res	RESB	Reservation Master
Mat	BAPI_MATERIAL_GET_DETAIL / BAPI_MATERIAL_GETLIST / MARA / MARC	Material Details
Locn		Derived from reservation
Bin	LAGP	Bin Details
Type	LAGP	Bin Type
Batch	MCHB / LQUA	IM / WM Batch Details
Qty		Must be numeric
Serial	EQUI / JEST	Serial Details
App Update	BAPI_GOODSMVT_CREATE	Movement Update

