

SAP INVENTORY MANAGEMENT – ISSUE TO PROJECT

This application issues material from inventory to a Project.

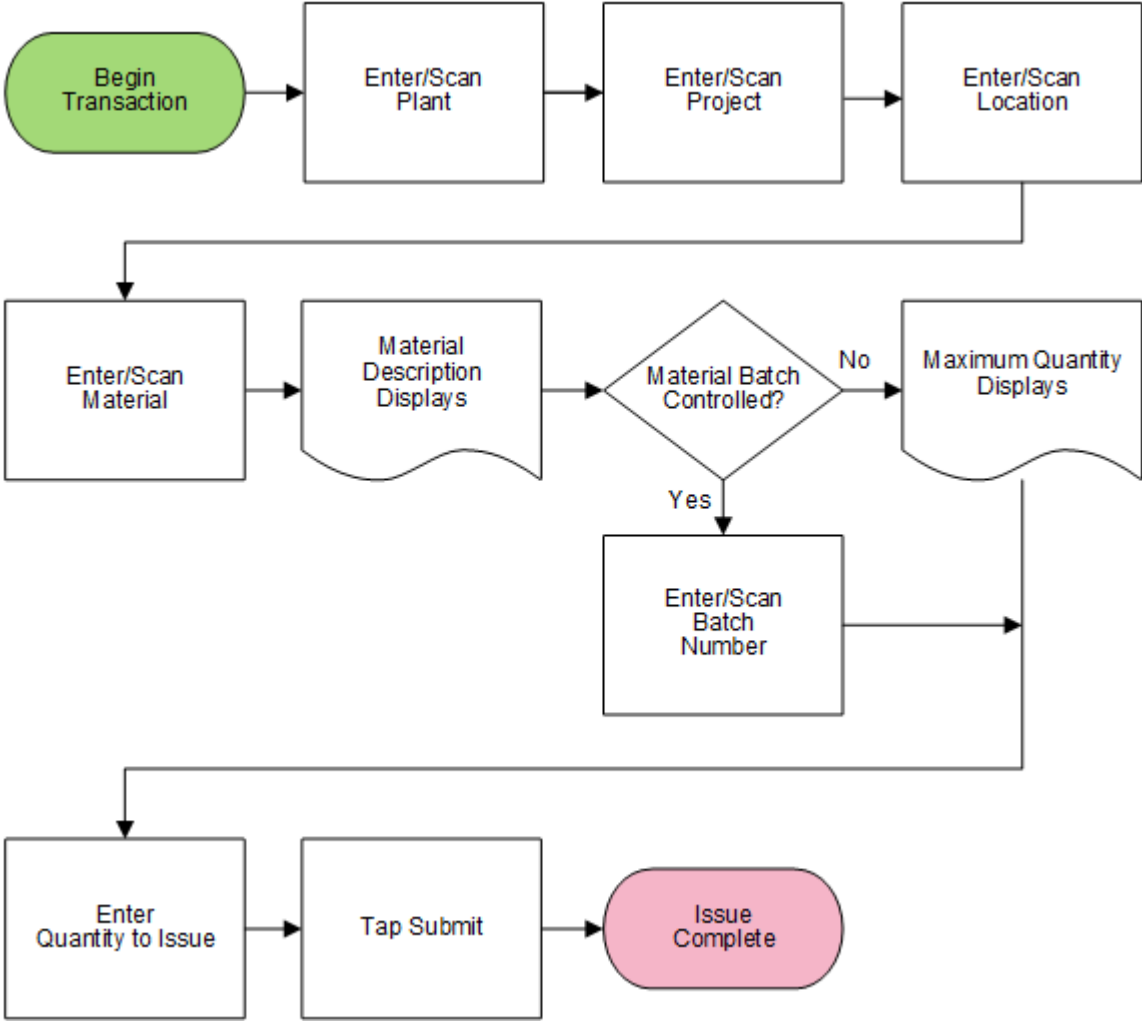
RFgen Functional Documentation

2021

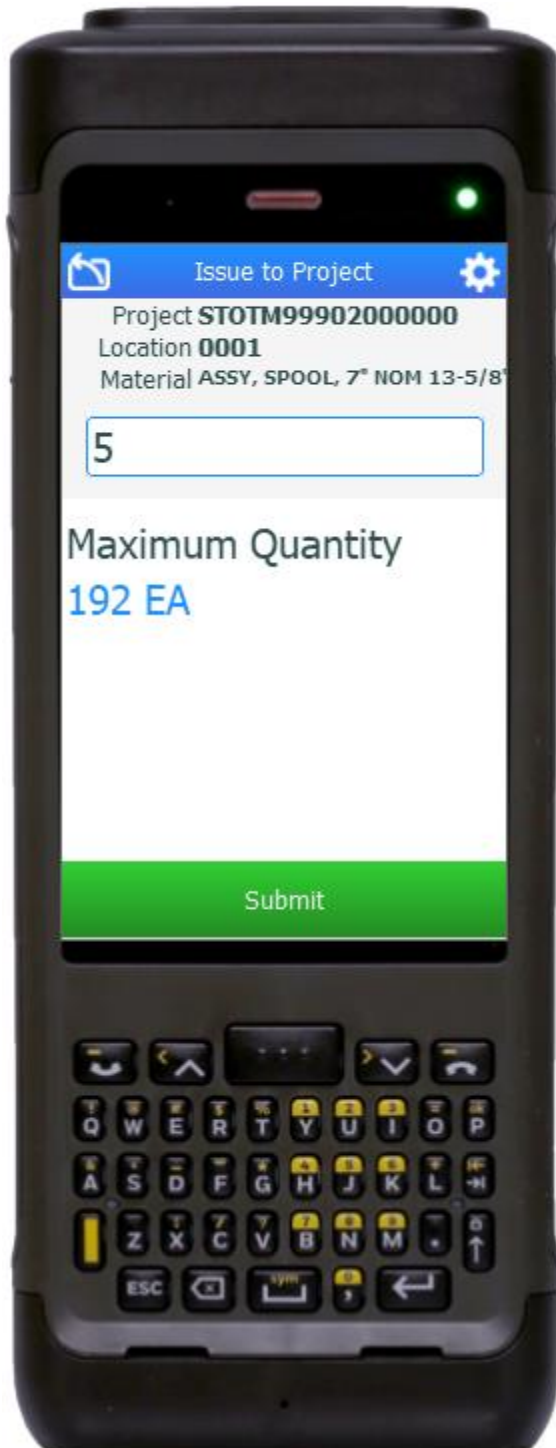
RFgen provides its customers SAP-validated, ready-to-use suites of Open Source applications and a development environment that can be used to create new apps or to modify existing apps.

This document describes the business workflow and technical information used in this application.

SAP: Inventory Management (IM) – Issue to Project



FIMII0203 IM – Issue to Project



This application issues a material from inventory to a project.

Description of Workflow

First the user will scan, enter, or search for a plant value.

The user scans, enters, or searches for a project.

The user scans, enters, or searches for a location where the material exists.

The user enters or searches for a material. To search for a material, the user taps the search icon in the Material field and enters the first few characters to filter the search results. If the material is found, the user selects it, and the material's description will be displayed.

If the material is batch-controlled, the Batch field will be visible. The user scans, enters, or searches for a batch number that is assigned to the material specified. The maximum quantity available of the material is shown.

The user enters the quantity they wish to issue. After validation, the Submit button appears.

The user taps the **Submit** button. The **Submit** button will post the issue of this material to SAP and reset the application.

The arrow in the upper left corner undoes the current entry and moves the cursor back to the previous prompt until you reach the menu.

Technical Information

This lists the tables used for validations, searches and defaults by prompt.

Prompt	Table	Description
Plant	T001W	User Property "PLANT"
Project	PRPS	Project Master
Locn	T320 / T001L	Location Master
Mat	BAPI_MATERIAL_GET_DETAIL / BAPI_MATERIAL_GETLIST / MARA	Material Master
Batch	MCHB	Batch Details
Qty		Must be numeric
App Update	BAPI_GOODSMVT_CREATE	Movement Update

