

SAP

INVENTORY MANAGEMENT – INVENTORY TRANSFERS

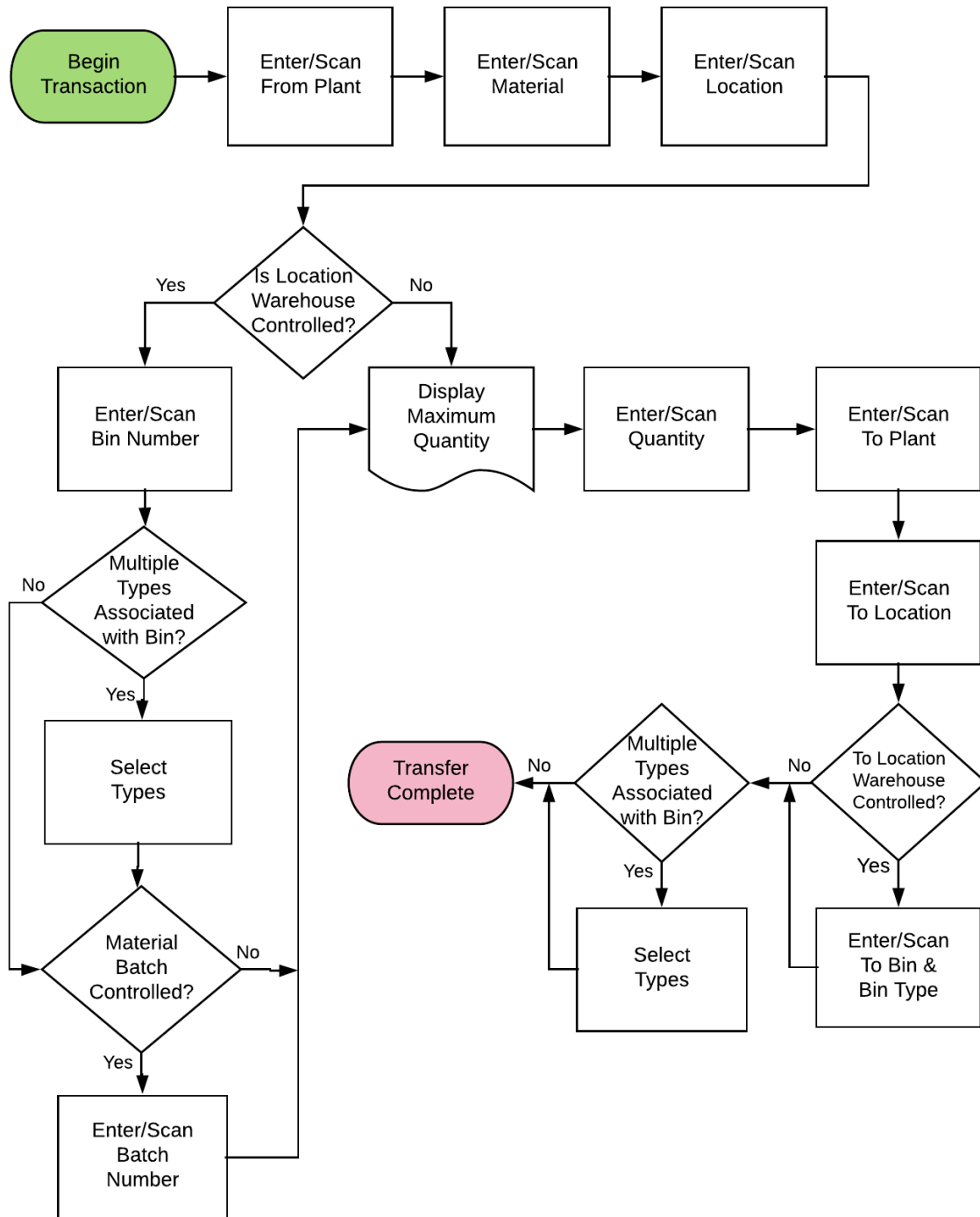
This application transfers a material from one place to another. This application can be called from the menu to perform many different types of transfers; Plant to Plant, Plant to Plant with Transit status, Plant to Plant Reversal, Location to Location, To Location from Transit, and Bin to Bin.

RFgen Functional Documentation
2021

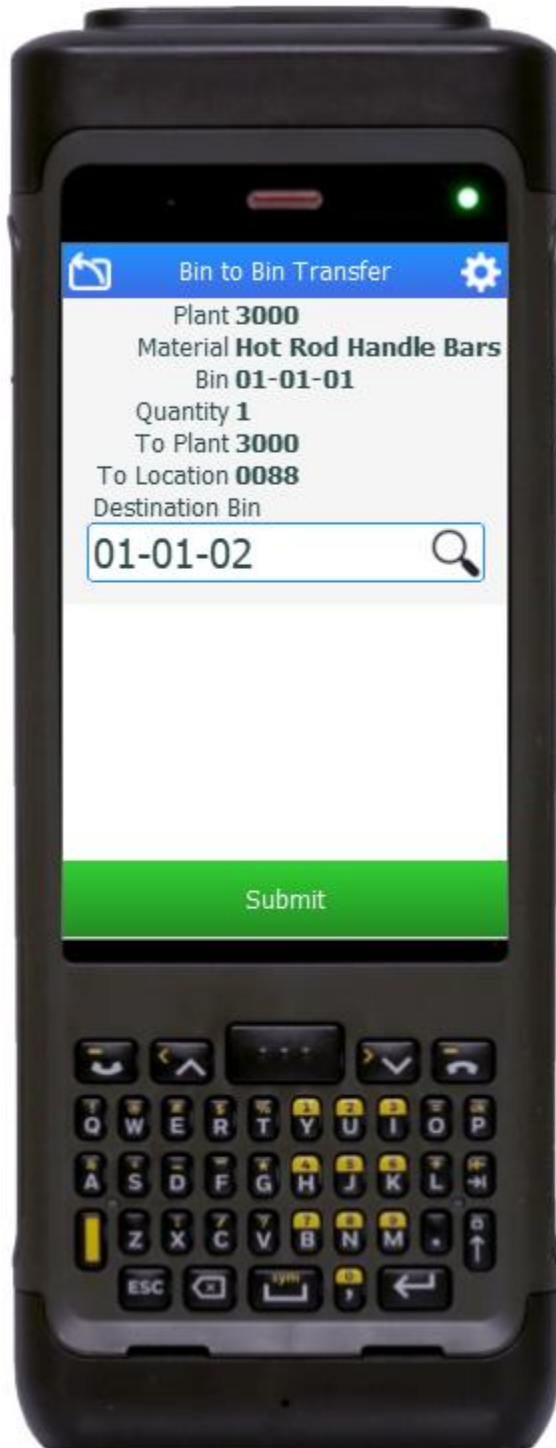
RFgen provides its customers SAP-validated, ready-to-use suites of Open Source applications and a development environment that can be used to create new apps or to modify existing apps.

This document describes the business workflow and technical information used in this application.

SAP: Inventory Management (IM) – Inventory Transfers



FIMIT0200 IM – Inventory Transfers



This application can be called from the menu to perform many different types of transfers; Plant to Plant, Plant to Plant with Transit status, Plant to Plant Reversal, Location to Location, To Location from Transit, and Bin to Bin.

Description of Workflow

First the user scans, enters, or searches for a plant value.

The user then scans, enters, or searches for a material.

The user enters or searches for a location. To search for a material, the user taps the search icon in the Material field and enters the first few characters to reduce the search. If the material is found, the user selects it, and the material's description will be displayed.

The user scans, enters, or searches for a location where the material exists.

If the location is a warehouse-controlled location the Bin and Type fields will appear.

The user scans, enters, or searches for a Bin number that is assigned to the material specified.

If there is more than one Type associated with that bin, the user will be prompted to pick one from a list.



If the material is Batch-controlled, the Batch field will be visible. The user scans, enters, or searches for a batch number that is assigned to the material specified. The maximum quantity available of the material is shown.

The user enters the quantity they wish to transfer.

The user scans, enters, or searches for the destination plant. Under some circumstances the destination plant needs to be different than the source plant.

The user scans, enters, or searches for a destination location.

If the destination location is a warehouse-controlled location the destination Bin and Type fields will appear.

The user scans, enters, or searches for a destination Bin number that is assigned to the location specified.

If there is more than one Type associated with that bin, the user will be prompted to pick one from a list.

The Submit button displays. The user taps the **Submit** button and it posts the transfer of this material to SAP and resets the application.

The arrow in the upper left corner undoes the current entry and moves the cursor back to the previous prompt until you reach the menu.



Technical Information

This lists the tables used for validations, searches and defaults by prompt.

Prompt	Table	Description
Plant	T001W	User Property "PLANT"
Mat	BAPI_MATERIAL_GET_DETAIL / BAPI_MATERIAL_GETLIST / MARA / MARC	Material Master
Locn	BAPI_MATERIAL_GETLIST / T320 / T001L / T159L / T156 / MARD / MCHB / MSPR / MSKA / LQUA	IM / WM Location Master
Bin	LAGP / LQUA	IM / WM Bin Details
Type	LAGP	Bin Type
Batch	MARD / MCHB / MSPR / MSKA / LQUA	IM / WM Batch Details
Qty		Must be numeric
To Plant	T001W	Plant Master
To Locn	BAPI_MATERIAL_GETLIST / T320 / T001L / T159L / T156	IM / WM Location Master
To Bin	LAGP	Bin Details
To Type	LAGP	Bin Type
App Update	BAPI_GOODSMVT_CREATE	Movement Update

Customization Considerations

If you are planning on creating a new version of this application or modifying it for a customer, consider asking these questions to help prepare your list of customization requirements.

1. What are the specific transfers do you want made?

