

DataMAX Software Group, Inc.
El Dorado Hills, CA 95762
USA

SAP

INVENTORY MANAGEMENT – INVENTORY RECLASSIFICATION

This application performs a reclassification of a material, turning one material into another.

RFgen Functional Documentation

2021

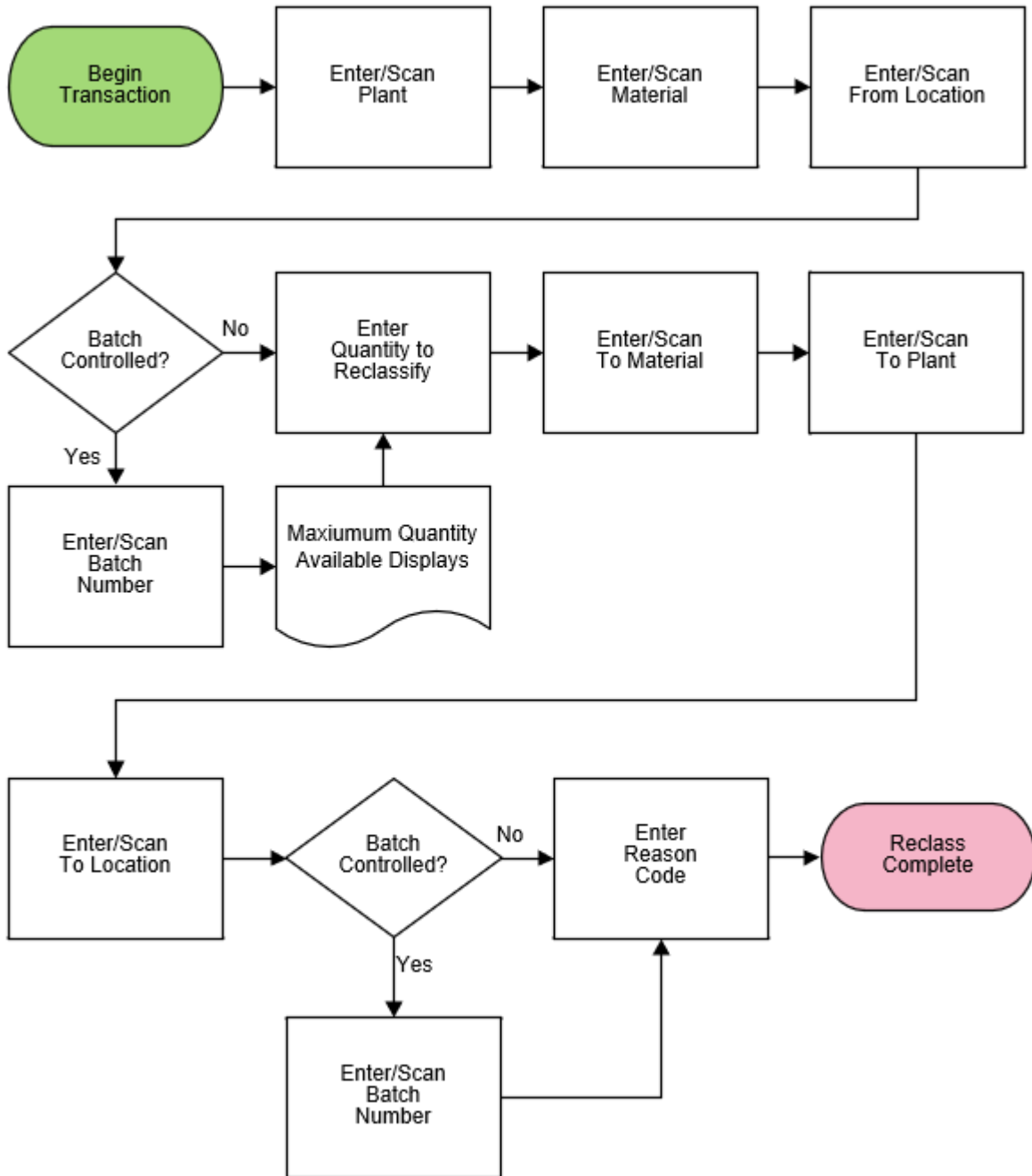
RFgen provides its customers SAP-validated, ready-to-use suites of Open Source applications and a development environment that can be used to create new apps or to modify existing apps.

This document describes the business workflow and technical information used in this application.

SAP[®] Certified
Integration with SAP Applications

RFgen.

SAP: Inventory Management (IM) – Inventory Reclassification



FIMIR0200 – Inventory Reclassification



This application performs a reclassification of a material, turning one material into another.

Description of Workflow

First the user will scan, enter, or search for a plant value.

The user enters or searches for a material. To search for a material, the user taps the search icon in the Material field and enters the first few characters to reduce the search. If the material is found, the user selects it, and the material's description will be displayed.

The user scans, enters, or searches for a location where the material exists.

If the material is Batch-controlled, the Batch field will be visible.

The user scans, enters, or searches for a batch number that is assigned to the material specified.

The maximum quantity available for the material displays. This is based on the plant, location, and / or batch values.

The user enters the quantity he/she wants to reclassify.

The user then scans, enters, or searches for the new class of material in the To Material field.



The user selects the new class from the list and the material's description displays.

The user scans, enters, or searches the destination plant. The To Plant value can be the same as the source plant.

The user scans, enters, or searches for a destination location (where the material will be placed in inventory) in the To Location field.

If the new material is batch-controlled, the Batch field will be visible. The user scans, enters, or searches for a batch number to which the new material will belong.

The user scans, enters, or searches for a reason if required.

The Submit button displays.

The user taps the **Submit** button which posts the reclassification of this material to SAP and resets the application.

The arrow in the upper left corner undoes the current entry and moves the cursor back to the previous prompt until you reach the menu.



Technical Information

This lists the tables used for validations, searches, and defaults by prompt.

Prompt	Table	Description
Plant	T001W	User Property "PLANT"
Mat	BAPI_MATERIAL_GET_DETAIL / BAPI_MATERIAL_GETLIST	Material Details
Locn	BAPI_MATERIAL_GETLIST / T320 / T001L / T159L / T156 / MARA / MARC / MARD / MCHB / MSPR / MSKA / LQUA	Location details per Material
Batch	MCHB / LQUA / MARD / MSPR / MSKA	IM / WM Batch master
Qty		Must be numeric
To Mat	BAPI_MATERIAL_GET_DETAIL / BAPI_MATERIAL_GETLIST / MARA / MARC	Material Details
To Plant	T001W	Plant Master
To Locn	BAPI_MATERIAL_GETLIST / T320 / T001L / T159L / T156	Location details per Material
Batch		New batch not validated
Reason	T157E	Reason for Movement
App Update	BAPI_GOODSMVT_CREATE	Movement Update

Customization Considerations

If you are planning on creating a new version of this application or modifying it for a customer, consider asking these questions to help prepare your list of customization requirements.

1. Do you want to include a Reason field?

