

SAP

INVENTORY MANAGEMENT – INVENTORY ADJUSTMENT (Both Positive and Negative)

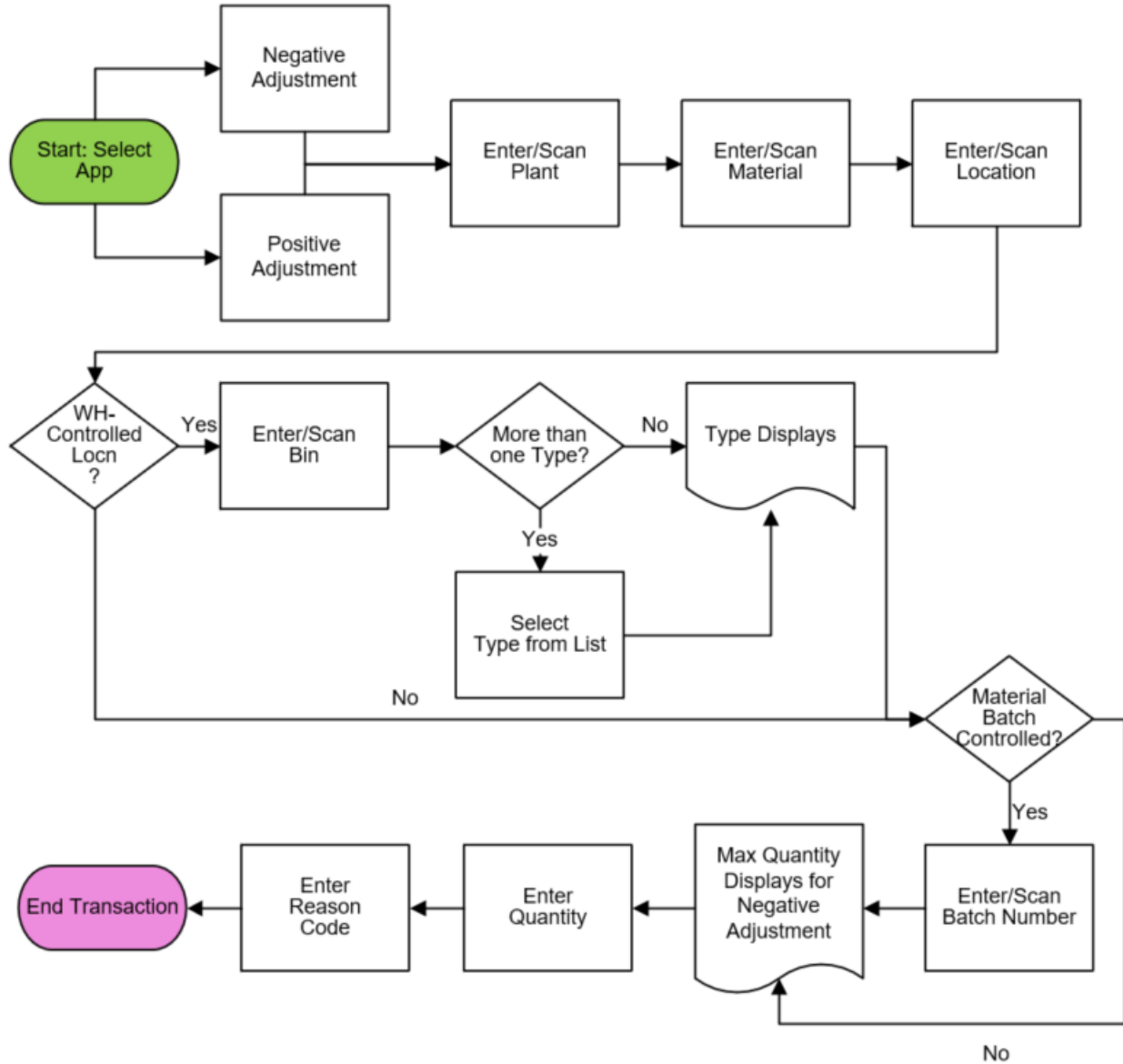
This application will adjust inventory levels up or down for a material depending on the menu selection. In the background, SAP updates the inventory and accounting records as required.

RFgen Functional Documentation
2021

RFgen provides its customers SAP-validated, ready-to-use suites of Open Source applications and a development environment that can be used to create new apps or to modify existing apps.

This document describes the business workflow and technical information used in this application.

SAP: Inventory Management (IM) – Inventory Adjustment (Both Positive and Negative)



FIMIA0200 – Inventory Adjustment (Both Positive and Negative)



This application is used to increase or decrease stock of a material at IM and/or WM level.

Description of Workflow

First the user selects the Inventory Positive Adjustment or Inventory Negative Adjustment from the application menu.

After the application launches, the user scans, enters, or searches for a plant value.

The user enters or searches for a material. To search for a material, the user taps the search icon in the Material field and enters the first few characters to reduce the search. If the material is found, the user selects it, and the material's description will be displayed.

If the material is batch-controlled, the Batch field will be visible.

The user scans, enters, or searches for a location where the material exists. If the location is a warehouse-controlled location the Bin and Type fields will appear.

The user scans, enters, or searches for a Bin number that is assigned to the material specified. If there is more than one type associated with that bin, the user will be prompted to pick one from a list.

The user scans, enters, or searches for a batch number that is assigned to the material specified.



To adjust the quantity of the material, the user enters the difference between the amount SAP believes it has, and the actual material found. **The user does not enter a new total quantity.**

In the case of a Negative Adjustment, the maximum possible quantity is displayed. It considers plant, location, bin, and batch values if they exist.

If the Reason is enabled, the user enters, scans or searches the code in the Reason field.

The user taps the Submit button. The **Submit** button will post the adjustment of this material to SAP and reset the application.

The arrow in the upper left corner will take the user back to the menu. The arrow in the upper left corner undoes the current entry and moves the cursor back to the previous prompt until you reach the menu.

Technical Information

This lists the tables used for validations, searches and defaults by prompt.

Prompt	Table	Description
Plant	T001W	User Property "PLANT"
Mat	BAPI_MATERIAL_GET_DETAIL / MARA / MARC	Material Details
Locn	T320 / T001L / MARD / MCHB / MSKA / MSPR / LQUA	Location master
Bin	LAGP / LQUA	Bin master
Type	LAGP	Bin Types
Batch	MCHB / LQUA / MARD	IM / WM Bin master
Qty		Must be numeric
Rsn	T157E	Reason for movement
App Update	BAPI_GOODSMVT_CREATE	Movement update

