

SAP INVENTORY MANAGEMENT – CYCLE COUNT

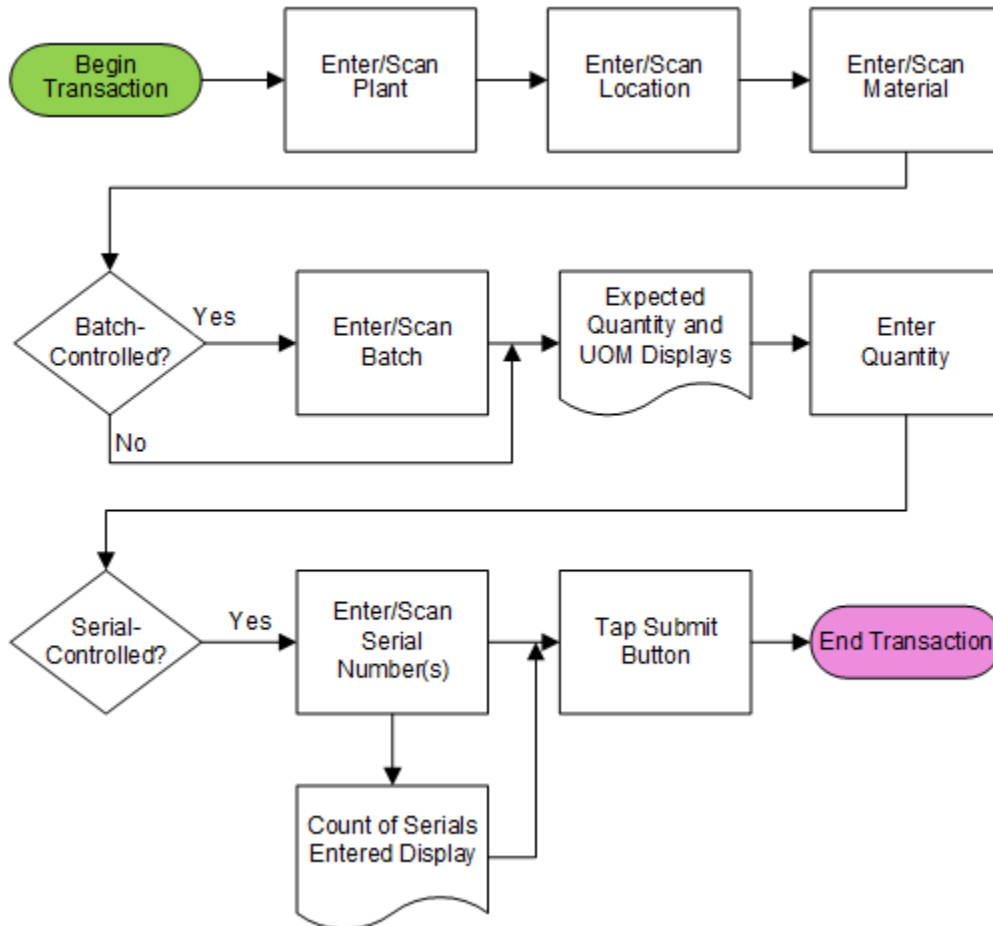
This application helps users count material by location and posts the counts to SAP. An Inventory Document is not needed to be created before use of the App, as Inventory Document is created and counted using this application.

RFgen Functional Documentation
2021

RFgen provides its customers SAP-validated, ready-to-use suites of Open Source applications and a development environment that can be used to create new apps or to modify existing apps.

This document describes the business workflow and technical information used in this application.

SAP: Inventory Management (IM) – Cycle Count



FIMCC0210 – Cycle Count Without Document



This application helps users count material by location and posts the counts to SAP. An Inventory Document is not used in this application process.

Description of Workflow

First the user scans, searches, or enters the plant if one is not automatically defaulted from the user's login.

Next, the user scans, searches, or enters the physical location.

The user scans, enters, or searches the material.

The material's description displays.

If the material is batch-controlled, the Batch field will be visible. The user scans, enters, or searches for a batch number that is assigned to the material specified.

The Quantity field and Expected UOM display. The user enters the amount of material counted in the Quantity field.

If the material is serial-controlled the Serial field will be visible. A counter of scanned serials displays as the user scans, enters or searches the serial numbers.

The user taps the **Submit** button, and the count of the material is posted to SAP.



The arrow in the upper left corner undoes the current entry and moves the cursor back to the previous prompt until you reach the menu.

Technical Information

This lists the tables used for validations, searches, and defaults by prompt.

Prompt	Table	Description
Plant	T001W	User Property "PLANT"
Locn	T001L	IM Location
Mat	MARA	Material Details
Batch	MCHB	IM Batch Details
Qty		Must be numeric
Serials	EQUI / JEST	Serial details
App Update	BAPI_MATPHYSINV_CREATE_MULT BAPI_MATPHYSINV_COUNT	Document update

Customization Considerations

If you are planning on creating a new version of this application or modifying it for a customer, consider asking these questions to help prepare your list of customization requirements.

1. Do you use hard errors or soft warnings when a count is not expected?

