

DataMAX Software Group, Inc.
El Dorado Hills, CA 95762
USA

SAP INVENTORY MANAGEMENT – CYCLE COUNT

This application helps users count material by location and posts the counts to SAP.

RFgen Functional Documentation

2021

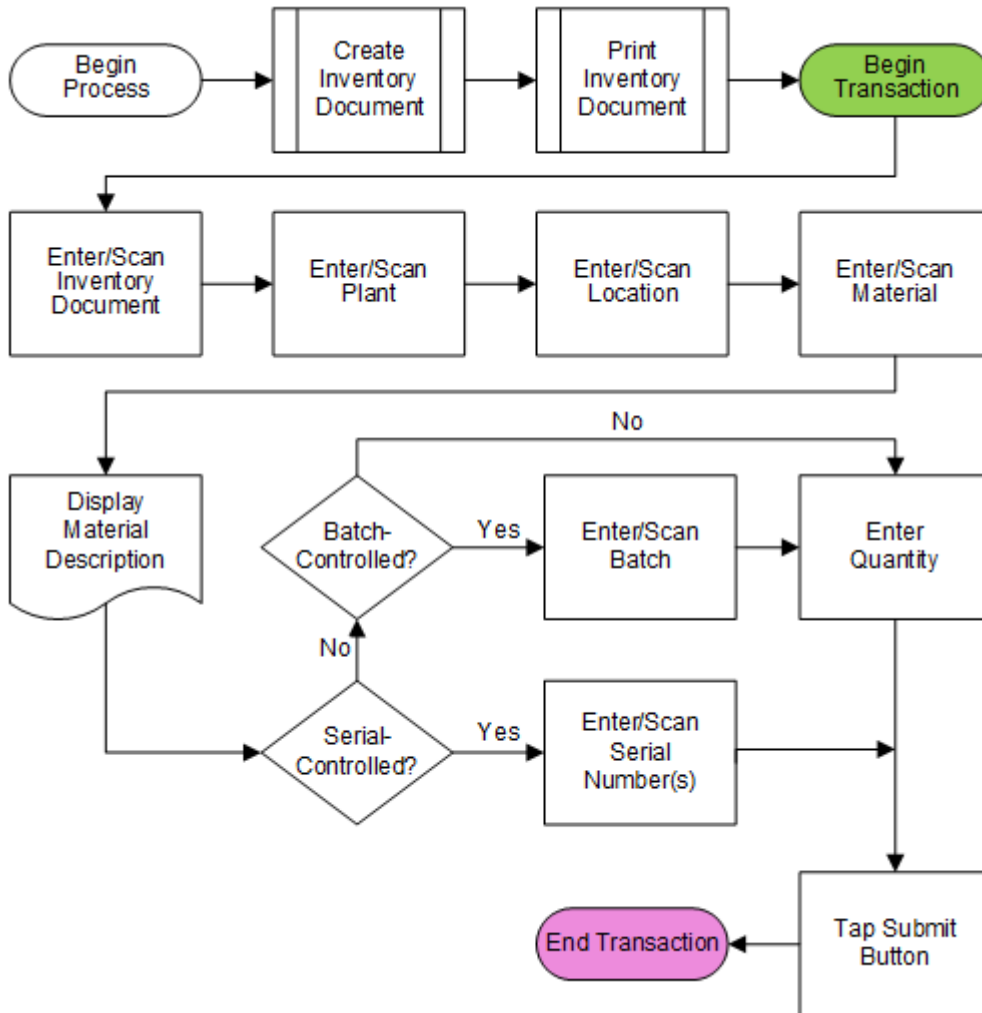
RFgen provides its customers SAP-validated, ready-to-use suites of Open Source applications and a development environment that can be used to create new apps or to modify existing apps.

This document describes the business workflow and technical information used in this application.

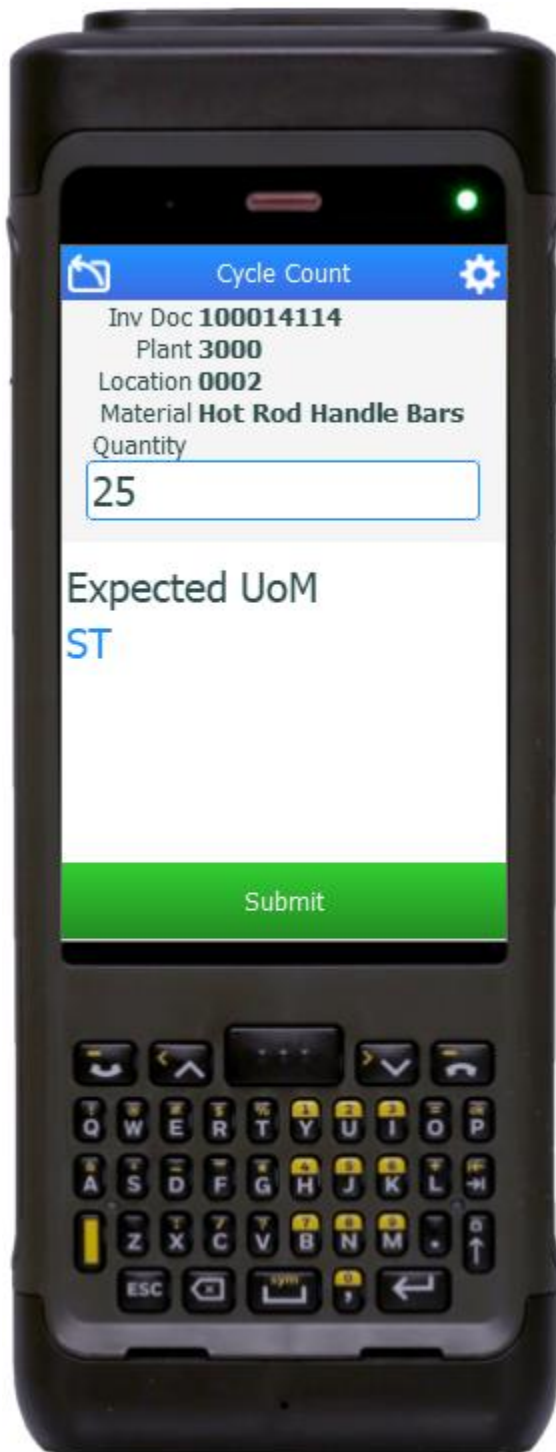
SAP[®] Certified
Integration with SAP Applications

RFgen.

SAP: Inventory Management (IM) – Cycle Count



FIMCC0200 – Cycle Count



This application helps users count material by location and posts the counts to SAP.

Description of Workflow

If necessary, an Inventory Document is created and printed (if necessary) from the SAP system before starting the Cycle Count application.

In the Cycle Count application, the user scans, enters, or searches the Inventory Document number. The document will default the plant (provide the plant name/identifier) for which the document was created.

The user scans or enters their physical location. Ideally, the user also scans the location on the Inventory Document to validate the information in the document and prove he/she is standing in the correct location. If the locations do not match, an error message displays.

The user scans, enters, or searches the material. To prove which item is being counted, the user should also scan the material on the Inventory Document for the specified location. If the materials do not match, an error message displays.

The material's description displays.

If the material is batch-controlled, the Batch field will be visible. The user scans, enters, or searches for a batch number that is assigned



to the material specified. The Quantity field and expected unit of measure (UOM) display. Then the user enters the count quantity.

If the material is serial-controlled the Serial field will be visible, and the user scans, enters or searches the serial numbers. The count of scanned serial numbers displays above the list of the serial numbers that were scanned.

Once the total count of serials are entered, the Submit button displays, and the user taps the **Submit** button.

The count of the material is posted to SAP, and RFgen resets the screen back to the Material field.

The arrow in the upper left corner undoes the current entry and moves the cursor back to the previous prompt until you reach the menu.



Technical Information

This lists the tables used for validations, searches, and defaults by prompt.

Prompt	Table	Description
Inv Doc	BAPI_MATPHYSINV_GETLIST	User Property "PLANT"
Locn		Must exist on the document
Mat	BAPI_MATERIAL_GET_DETAIL	Material Details
Batch		Must exist on the document
Qty		Must be numeric
Serials	EQUI / JEST	Serial details
App Update	BAPI_MATPHYSINV_COUNT BAPI_MATPHYSINV_CHANGECOUNT	Document update

Customization Considerations

If you are planning on creating a new version of this application or modifying it for a customer, consider asking these questions to help prepare your list of customization requirements.

1. What is your process if a material is not found? What do you do?
2. What is done if a material is found that doesn't exist on the document?
3. Do you use hard errors or soft warnings when a count is not expected?

