

DataMAX Software Group, Inc.  
El Dorado Hills, CA 95762  
USA

# SAP FIXED ASSET – ISSUE TO ASSET NUMBER

This application will issue material to an asset number.

---

RFgen Functional Documentation  
2021

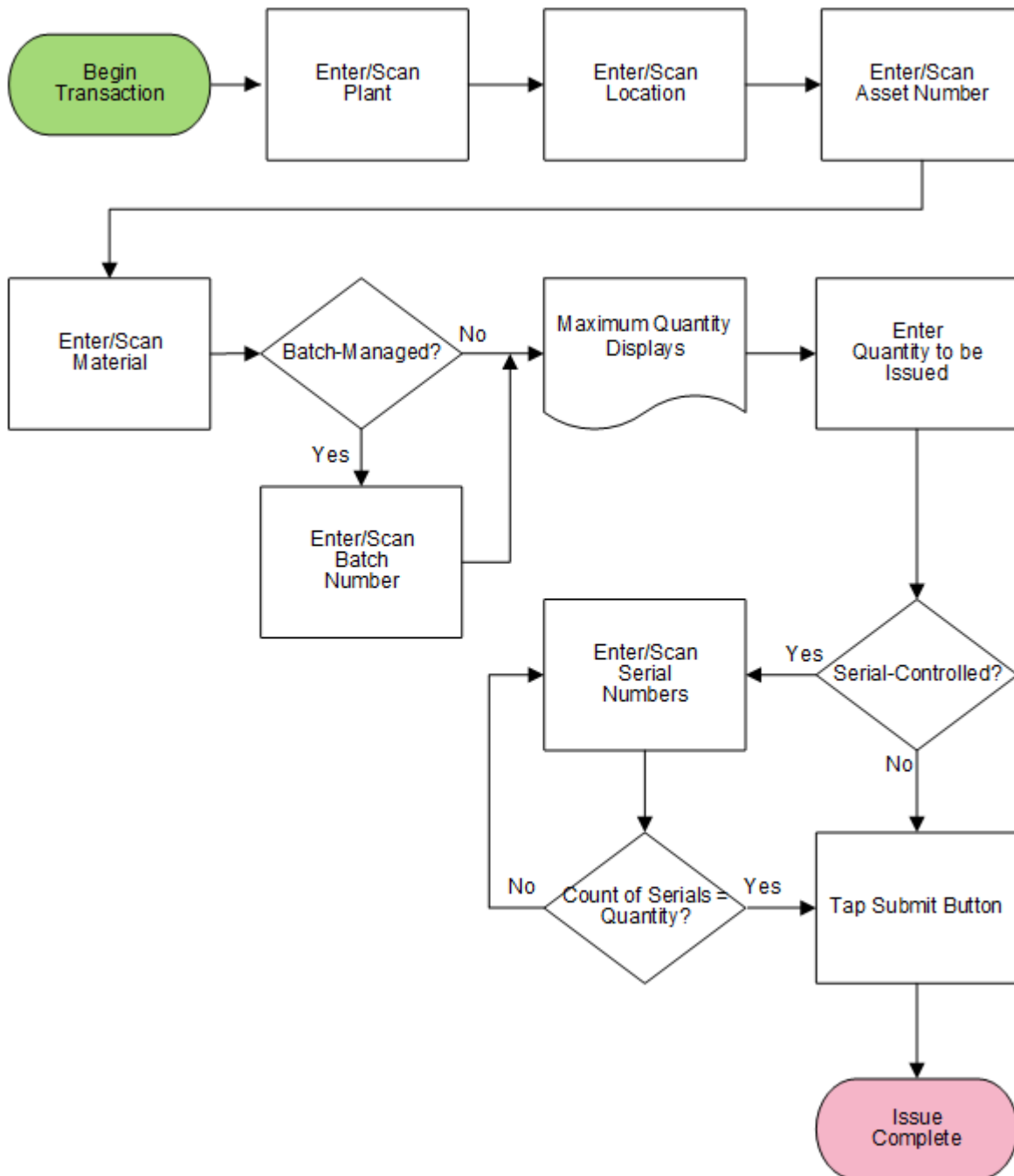
RFgen provides its customers SAP-validated, ready-to-use suites of Open Source applications that can be used to create new apps or to modify existing apps.

This document describes the business workflow and technical information used in this application.

**SAP**<sup>®</sup> Certified  
Integration with SAP Applications

**RFgen.**

## SAP: Fixed Asset (FA) - Issue to Asset Number



## FFAII0200 FA – Issue to Asset Number



This application is used to issue materials to an asset.

### Description of Workflow

First the user scans, enters, or searches for a plant value if one is not defaulted from the user's profile.

The user scans, enters, or searches for a location. The location must exist in the plant specified.

The user scans or enters an asset number.

The user scans or enters a material number which must exist in the location specified. The material description displays.

If the material is batch-controlled, the Batch field displays.

The user scans, enters, or searches for a batch number. The maximum quantity that can be issued for the batch displays.

If the material was not batch-controlled, then the maximum quantity is based on the material and location.

The user enters the quantity to be issued.

If the material is serial-controlled, the Serial field displays. The user scans or selects and enters serials from a list of serial numbers until the count of serials equals the quantity to be issued. Then the field will exit, and the application will display the Submit button.

The user taps the **Submit** button, and it posts the issue to SAP and resets the application.

The arrow in the upper left corner removes the current entry and moves the cursor back to the previous prompt until the user reaches the menu.

## Technical Information

This lists the tables used for validations, searches, and defaults by prompt.

Prompt	Table	Description
Plant	T001W	User Property "PLANT"
Locn	T320 / T001L	Storage Locations
Asset	ANLA	Asset Master
Mat	BAPI_MATERIAL_GET_DETAIL / MARA / MARC / MARD / MCHB / MSPR / MSKA / LQUA	Material Details
Batch	MCHB / LQUA / MARD / MSPR / MSKA	Batch Details
Qty		
Serial	EQUI / JEST	Serial Details
App Update	BAPI_GOODSMVT_CREATE	Movement Update

