

DataMAX Software Group, Inc.
El Dorado Hills, CA 95762
USA

SAP

EXTENDED WAREHOUSE MANAGEMENT – PUTAWAY BY WAREHOUSE ORDER

This application helps put away material sitting in receiving area to storage bins.

RFgen Functional Documentation

2021

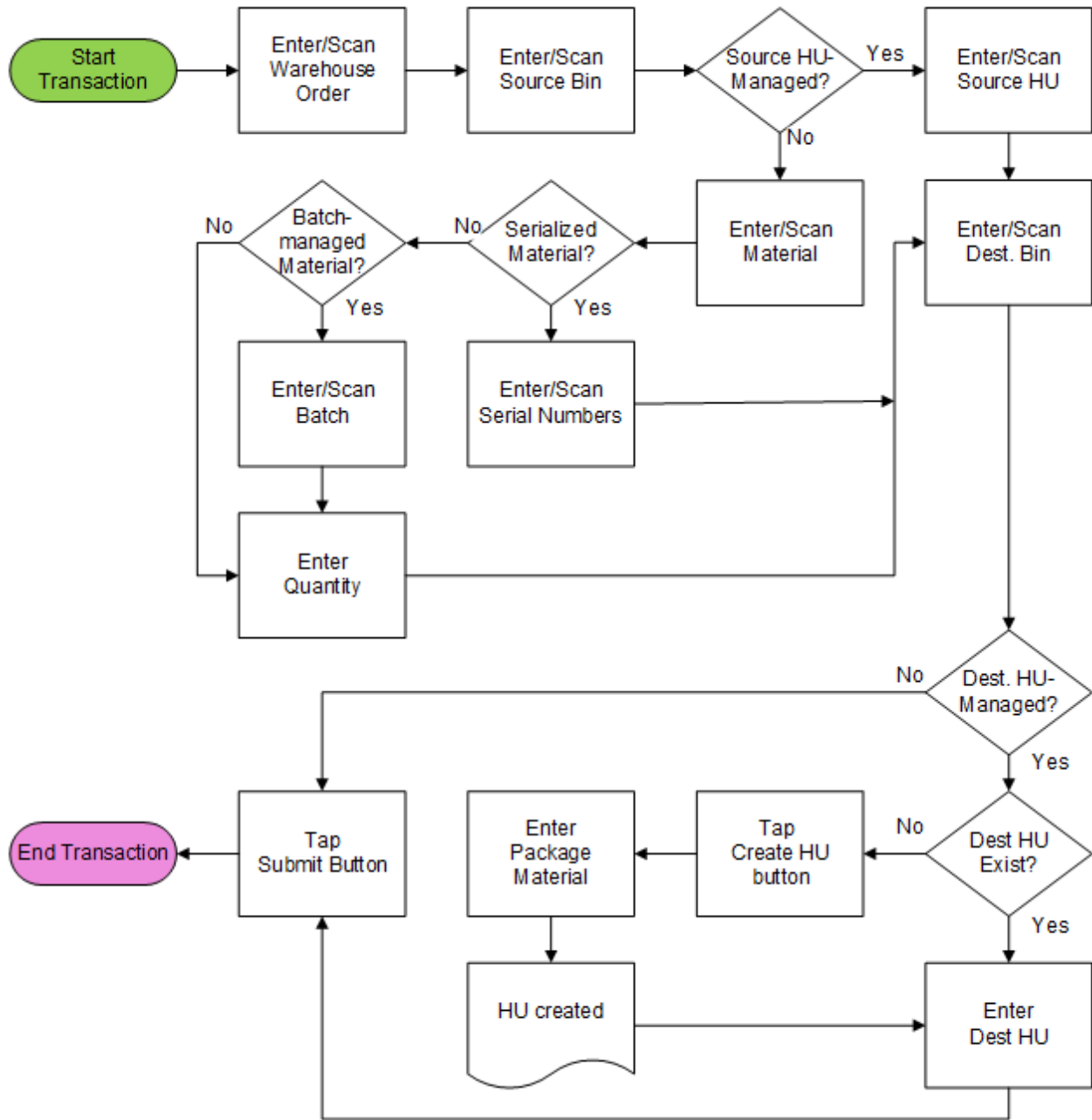
RFgen provides its customers SAP-validated, ready-to-use suites of Open Source applications and a development environment that can be used to create new apps or to modify existing apps.

This document describes the business workflow and technical information used in this application.

SAP[®] Certified
Integration with SAP Applications

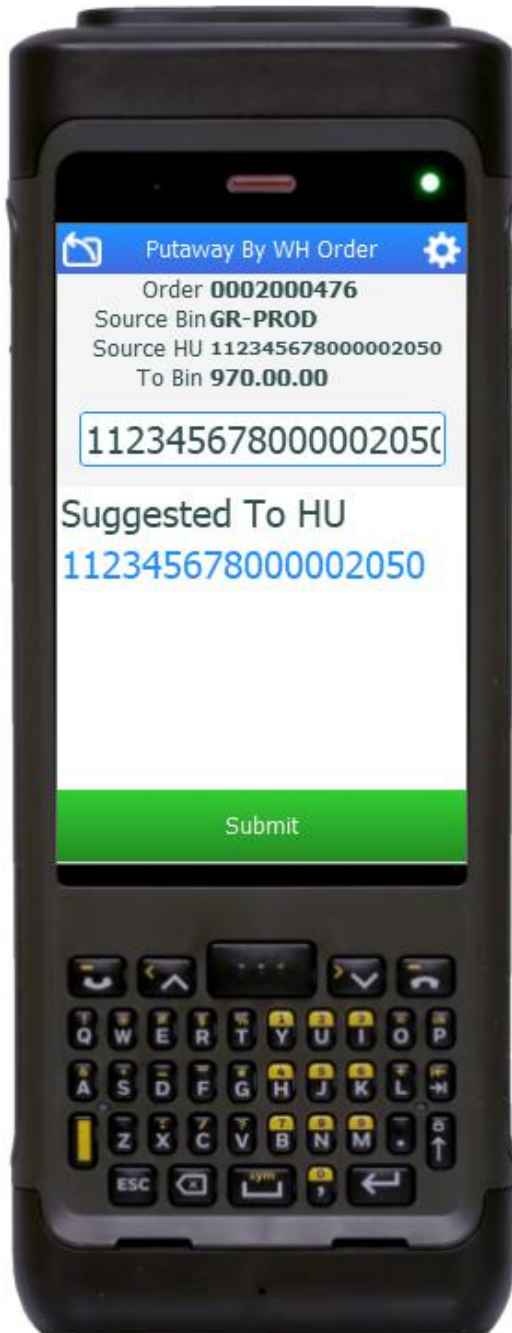
RFgen.

SAP: Extended Warehouse Management (EWM) – Putaway by Warehouse Order



FEWWO0200 – Putaway by WO

This application is used to put material sitting in receiving area into storage bins.



Description of Workflow

First, the user scans, or enters, or searches for an open, putaway warehouse order (WO).

The application gets the first open warehouse task of the WO. The application suggests the values that are required to proceed with the WO.

The user scans or enters the source bin. If the source storage bin is HU-managed, the HU field will be visible. Otherwise, the HU field will be invisible, and the Material, Batch (for batch-managed material), Quantity (for non-serialized material), and Serial (for serialized material) fields will be visible.

If the HU field is visible, the user scans or enters the HU.

If the Material field is visible, the user scans or enters the material.

If the Batch field is visible, the user scans or enters the batch.

If the Quantity field is visible, the user enters a quantity to putaway.

If the Serial field is visible, the user enters or scans as many serial numbers as needed. The application validates whether the scanned serial number exists in the source bin, and then

lists the accumulated scanned serial numbers. After all serial numbers are scanned, the user taps the **Next** button to proceed.

The user scans or enters the destination bin. If the destination bin is HU-managed, the To HU field will be visible. The user may scan or enter an existing HU.

The user may also tap the **Create HU** button to create an HU if needed.

The **Packaging Material** field will be visible for HU creation. The user enters, scans, or searches for a packaging material and taps the **Next** button to create an HU.

The user taps the **Submit** button. The **Submit** button will post the putaway to SAP to confirm the warehouse task and reset back to Warehouse Order field.

The arrow in the upper left corner undoes the current entry and moves the cursor back to the previous prompt until you reach the menu.



Technical Information

This lists the tables used for validations, searches and defaults by prompt.

Prompt	Table	Description
Warehouse Order	ZRFGEN_EWM_TO_READ_WHO	RFgen custom function
Packaging Material	/SAPAPO/MATPACK	Packing/Packaging Data
Pick HU	/SCWM/HUHDR	Handling Unit Header
Source Bin	ZRFGEN_EWM_TO_READ_WHO	RFgen custom function
Material	ZRFGEN_EWM_TO_READ_WHO	RFgen custom function
Batch	ZRFGEN_EWM_TO_READ_WHO	RFgen custom function
Source HU	ZRFGEN_EWM_TO_READ_WHO	RFgen custom function
Dest. Bin	ZRFGEN_EWM_TO_READ_WHO	RFgen custom function
Serial	/SCWM/SERI	Confirmed serial numbers

Customization Considerations

If you are planning on creating a new version of this application or modifying it for a customer, consider asking these questions to help prepare your list of customization requirements.

1. What should the Warehouse Order, Source Bin, Material, Source HU and Destination Bin be customized to?
2. Do you want to customize for Batch?
3. What serials are used?

