

DataMAX Software Group, Inc.  
El Dorado Hills, CA 95762  
USA

# SAP

## EXTENDED WAREHOUSE MANAGEMENT – PICK BY WAREHOUSE ORDER

This application helps pick materials from storage bins and transfer to a staging area per resource.

---

RFgen Functional Documentation

2021

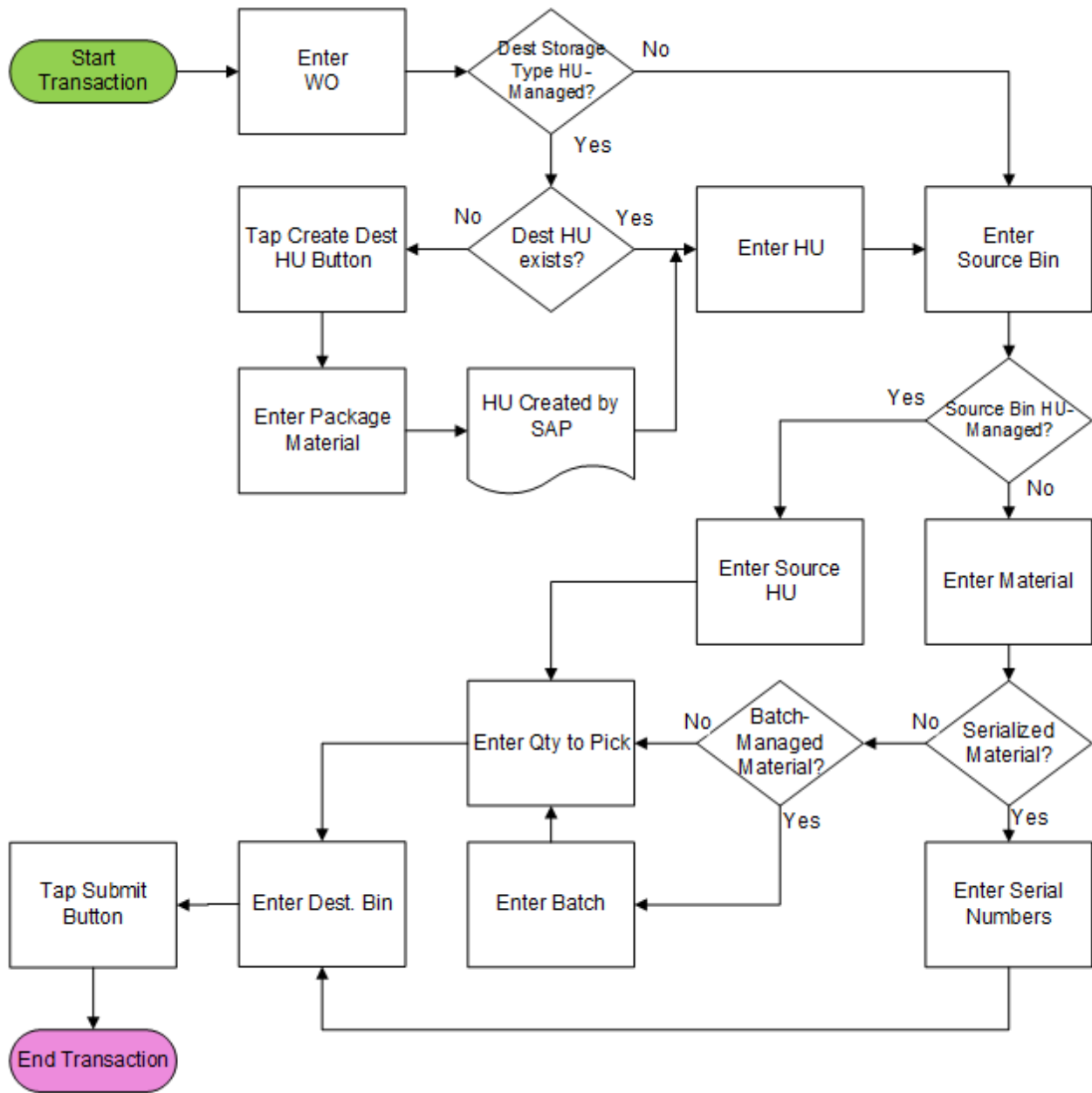
RFgen provides its customers SAP-validated, ready-to-use suites of Open Source applications and a development environment that can be used to create new apps or to modify existing apps.

This document describes the business workflow and technical information used in this application.

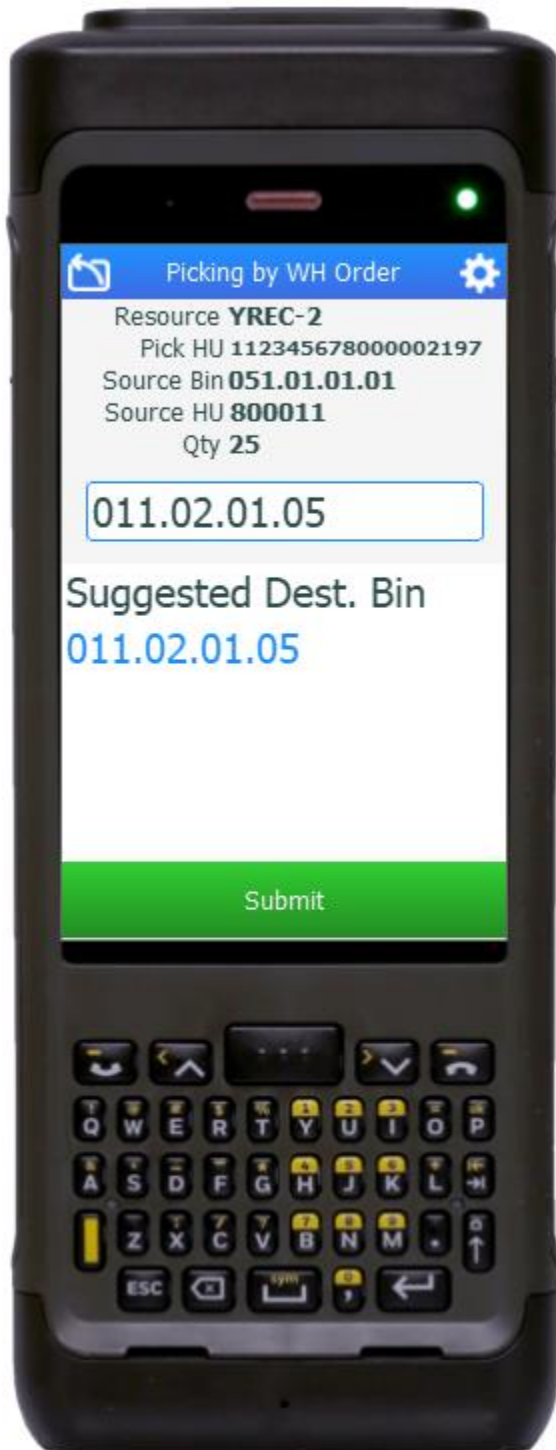
**SAP**<sup>®</sup> Certified  
Integration with SAP Applications

**RFgen.**

# SAP: Extended Warehouse Management (EWM) – Guided Picking by Warehouse Order



## FEWWO0200 – Guided Picking by Warehouse Order



This application is used to pick materials from storage bins and transfer to a staging area per resource.

### Description of Workflow

First, the user scans, or enters, or searches for a resource. The application will retrieve the first open warehouse task assigned to the resource to proceed.

If destination storage type is HU-managed, the HU field will be visible. The user scans or enters an existing picking HU, or taps the **Create HU** button to create a new picking HU.

The user scans or enters a source bin. The bin must match that on the warehouse task.

If the source bin is HU-managed, the Source HU field will be visible. The user scans or enters a source HU. The HU must match that on the warehouse task.

If the source bin is not HU-managed, the user will scan or enter the material to pick. For serialized material, the user needs to scan the serial numbers; for batch-managed material, the user needs to scan the batch.

The user enters the quantity to pick. The open quantity to pick is shown at the bottom for user's reference.



The user enters or scans the destination bin. The bin must match that on the warehouse task.

The user taps the **Submit** button. The **Submit** button will post the picking to SAP to confirm the warehouse task and reset back to Warehouse Order field.

The arrow in the upper left corner undoes the current entry and moves the cursor back to the previous prompt until the user reaches the menu.

## Technical Information

This lists the tables used for validations, searches and defaults by prompt.

Prompt	Table	Description
Resource	/SCWM/RSRC	Manage Resource
Warehouse Order	ZRFGEN_EWM_TO_READ_WHO	RFgen custom function
Packaging Material	/SAPAPO/MATPACK	Packing/Packaging Data
Pick HU	/SCWM/HUHDR	Handling Unit Header
Source Bin	ZRFGEN_EWM_TO_READ_WHO	RFgen custom function
Source HU	ZRFGEN_EWM_TO_READ_WHO	RFgen custom function
Dest. Bin	ZRFGEN_EWM_TO_READ_WHO	RFgen custom function

## Customization Considerations

If you are planning on creating a new version of this application or modifying it for a customer, consider asking these questions to help prepare your list of customization requirements.

1. What do you want to customize the Warehouse Order to?
2. What do you want to customize the Source Bin to?
3. What do you want to customize the Source HU to?
4. What do you want to customize the Destination Bin to?

