

DataMAX Software Group, Inc.
El Dorado Hills, CA 95762
USA

SAP

EXTENDED WAREHOUSE MANAGEMENT – PICK BY WAREHOUSE ORDER

This application helps pick materials from storage bins and transfer them to a staging area per warehouse order.

RFgen Functional Documentation

2021

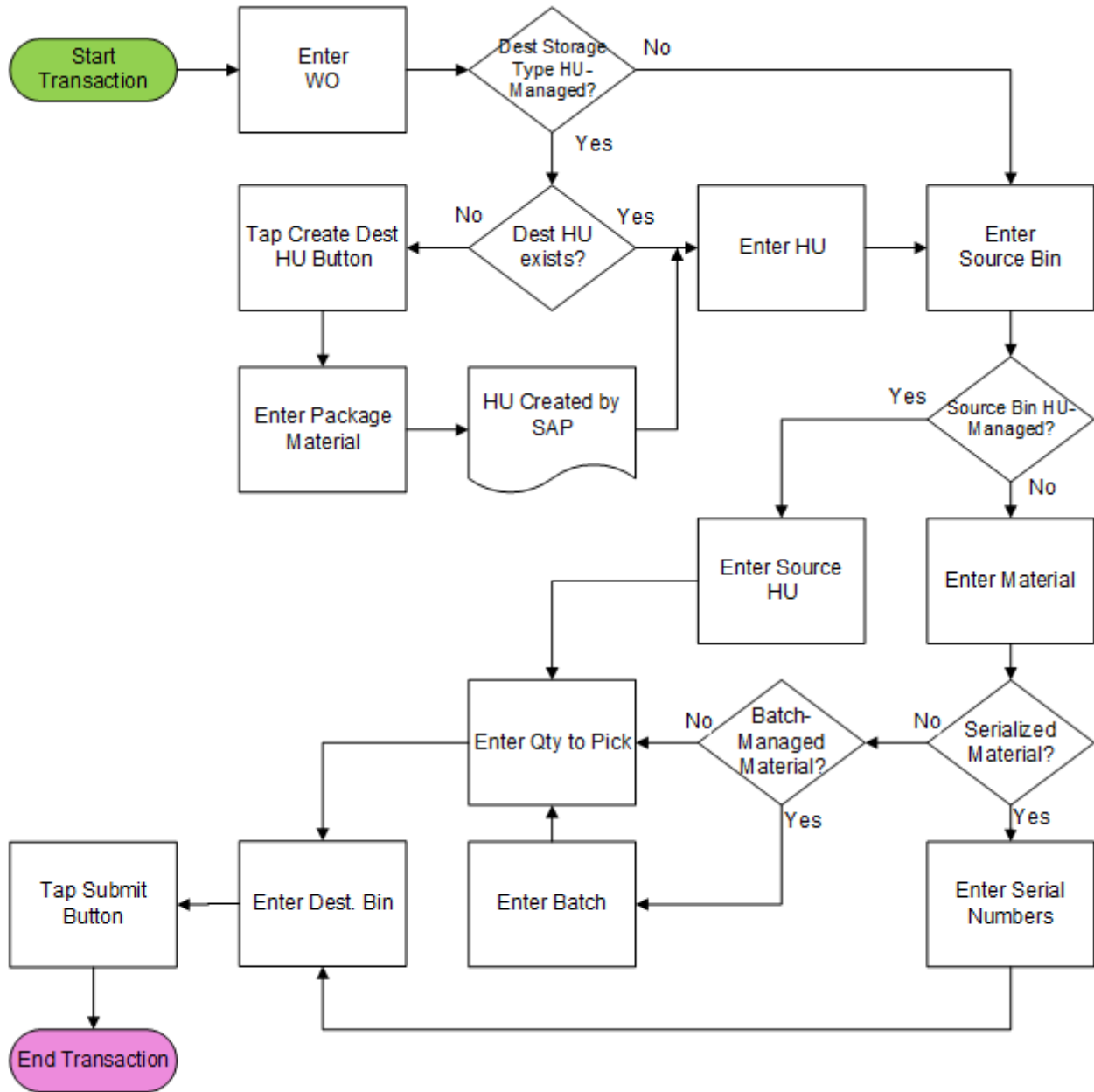
RFgen provides its customers SAP-validated, ready-to-use suites of Open Source applications and a development environment that can be used to create new apps or to modify existing apps.

This document describes the business workflow and technical information used in this application.

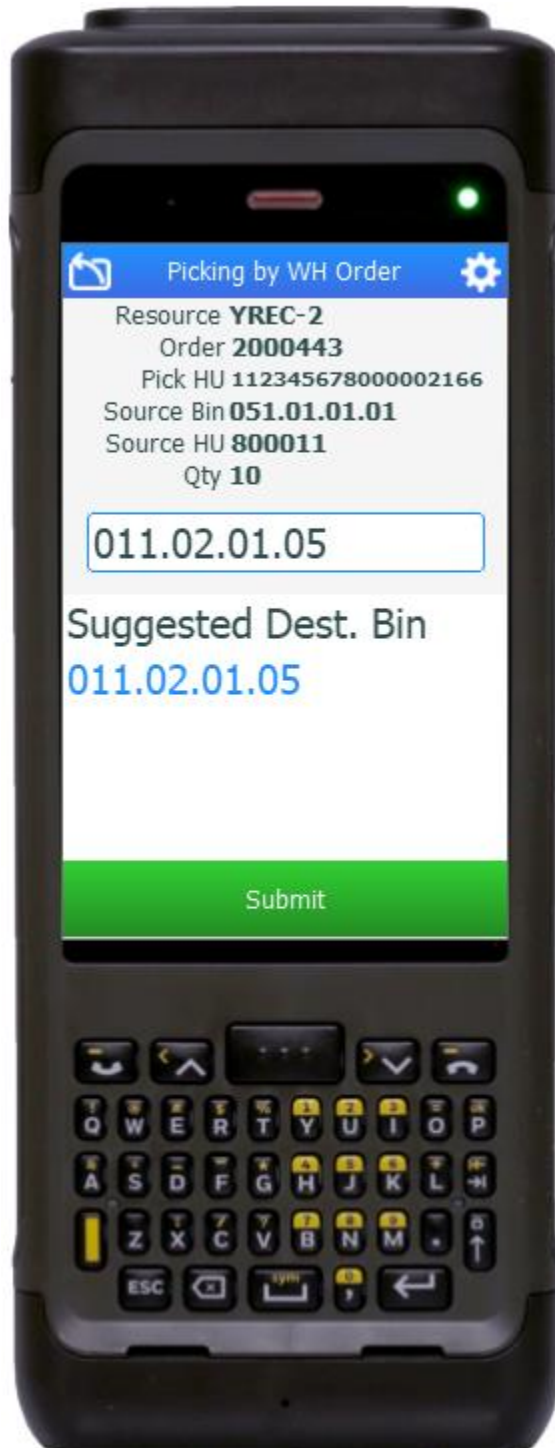
SAP[®] Certified
Integration with SAP Applications

RFgen.

SAP: EWM – Picking By Warehouse Order



FEWWO0200 – Picking by Warehouse Order



This application is used to pick materials from storage bins and transfer them to a staging area.

Description of Workflow

First, the user scans, or enters, or searches for a picking warehouse order. The application will retrieve the first open warehouse task for the user to proceed.

If the destination storage type is HU-managed, the HU field will be visible. The user scans or enters an existing picking HU or taps the **Create HU** button to create a new picking HU.

The user scans or enters a source bin. The bin must match that on the warehouse task.

If the source bin is HU-managed, the Source HU field will be visible. The user scans or enters a source HU. The HU must match that on the warehouse task.

If the source bin is not HU-managed, the user will scan or enter the material to pick. For serialized material, the user needs to scan the serial numbers. For batch-managed material, the user needs to scan the batch.

The user enters the quantity to pick. The open quantity to pick is shown at the bottom for user's reference.



The user enters or scans the suggested destination bin. (This is the bin suggested by the application.) The bin must match that on the warehouse task.

The user taps the **Submit** button. The **Submit** button will post the picking to SAP to confirm the warehouse task and reset back to Warehouse Order field.

The arrow in the upper left corner undoes the current entry and moves the cursor back to the previous prompt until you reach the menu.

Technical Information

This lists the tables used for validations, searches and defaults by prompt.

Prompt	Table	Description
Resource	/SCWM/RSRC	Maintain Resource
Warehouse Order	ZRFGEN_EWM_TO_READ_WHO	RFgen custom function
Packaging Material	/SAPAPO/MATPACK	Packing/Packaging Data
Pick HU	/SCWM/HUHDR	Handling Unit Header
Source Bin	ZRFGEN_EWM_TO_READ_WHO	RFgen custom function
Source HU	ZRFGEN_EWM_TO_READ_WHO	RFgen custom function
Dest. Bin	ZRFGEN_EWM_TO_READ_WHO	RFgen custom function

Customization Considerations

If you are planning on creating a new version of this application or modifying it for a customer, consider asking these questions to help prepare your list of customization requirements.

1. Do you want to customize the Warehouse Order?
2. Do you want to customize the Source Bin?
3. Do you want to customize the Source HU?
4. Do you want to customize the Destination Bin?

