

DataMAX Software Group, Inc.  
El Dorado Hills, CA 95762  
USA

# SAP EXTENDED WAREHOUSE MANAGEMENT – INVENTORY COUNTING

This application helps count the items on a physical inventory document.

---

RFgen Functional Documentation

2021

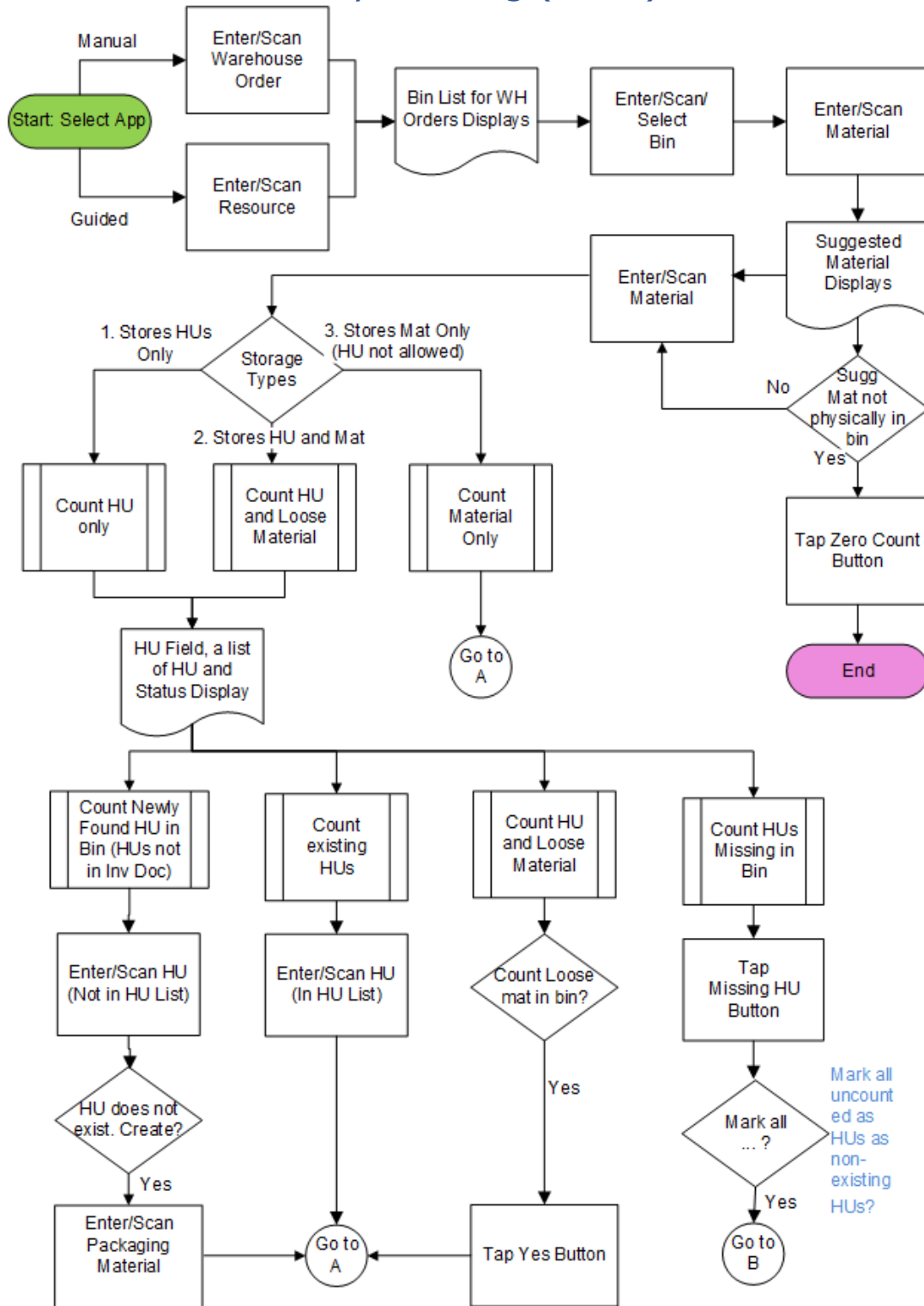
RFgen provides its customers SAP-validated, ready-to-use suites of “Open Source” applications and a development environment that can be used to create new apps or to modify existing apps.

This document describes the business workflow and technical information used in this application.

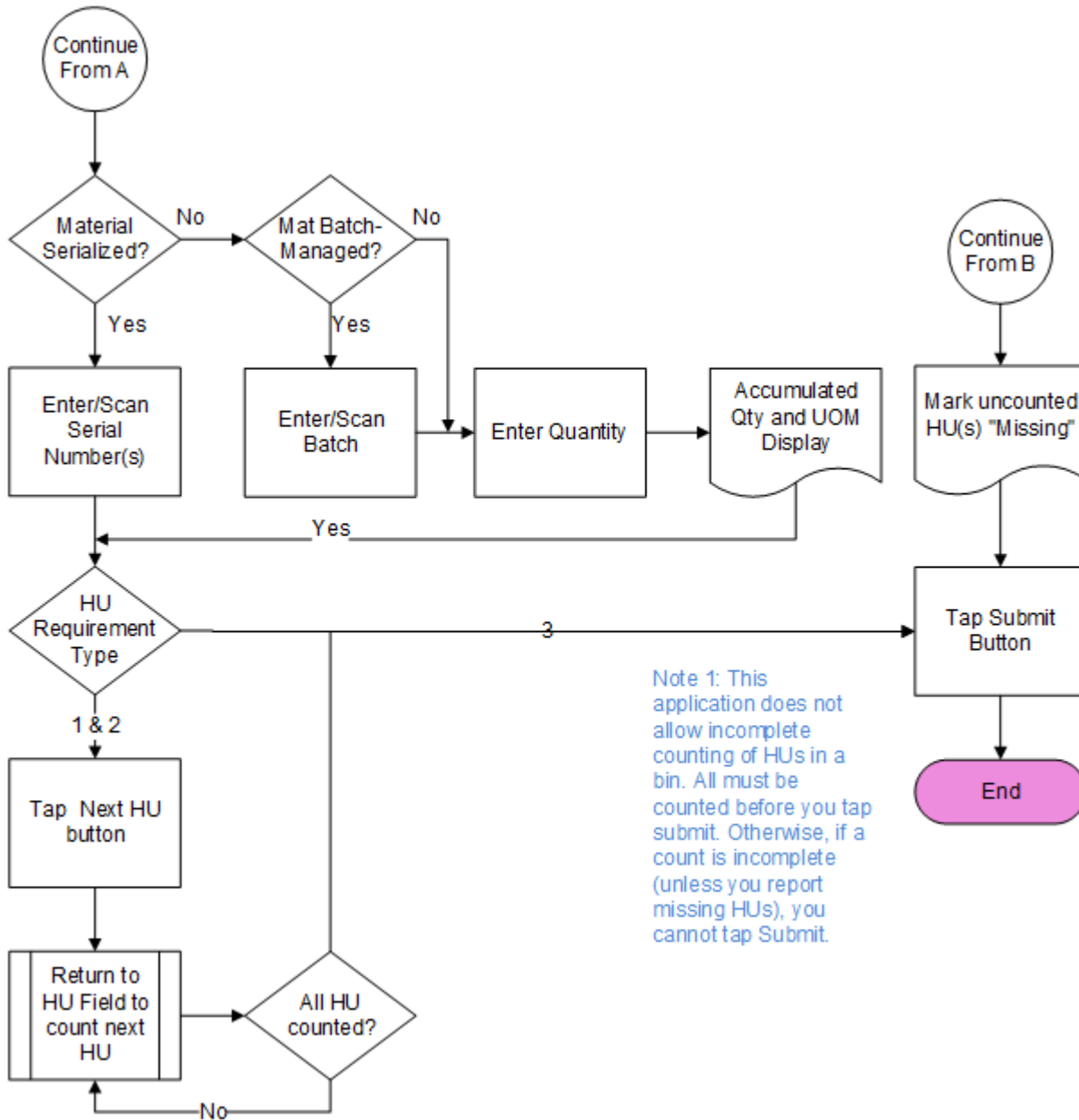
**SAP**<sup>®</sup> Certified  
Integration with SAP Applications

**RFgen.**

# SAP: EWM – Inventory Counting (1 of 2)



## SAP: EWM – Inventory Counting (2 of 2)



## FEWCC0200 – Inventory Counting



This application is used to count items on inventory documents and provides a manual-guided workflow and a system-guided workflow.

### Description of Workflow

First the user brings up the application menu and then selects the **Manual Inventory Counting** or **Guided Inventory Counting** application.

If the **Manual Inventory Counting** application was selected, the user scans, enters, or searches for a warehouse order that is available for inventory counting.

If the **Guided Inventory Counting** application was selected, the user scans, enters, or searches for a resource. The application will retrieve all the Inventory Warehouse Orders assigned to the resource.

A list of bins associated with the warehouse order(s) will be displayed with information including bin, material, and status. The status can be "Active" for Bins to count, "Counted" for counted Bins.

The user scans, or enters, or searches for an active bin to count. The user may also click to choose one item to count from the list.



Next, the user scans or enters a material to count. The suggested material to count will be displayed.

The User may choose to count the Suggested Material or scan another material. The material must be booked in the entered bin on the inventory document.

If the suggested material is not physically found in the bin, then the user taps the **Zero Count** button and then taps the **Submit** button. The application submits the zero count of the material in the bin to SAP and returns to the list of bins so that the user may start a new count.

Based on the HU Requirement Type of the storage type, the bin can store HUs only (HU obligatory), both HU and loose material (HU optional), or loose material only (HU not allowed).

- If the bin can store HU only, the user can count newly found HUs, count HUs one-by-one, and count HUs as missing.
- If the bin can store HU and loose material, the user can count newly found HUs, count HUs one-by-one, count HUs as missing, and count loose material.
- If the bin can store loose material only, the user can only count the material.
- If the storage type is HU obligatory or optional, a list of handling units (HUs) booked in the bin will be displayed. The user should count all the booked HUs before the user taps the **Submit** button.

To count the content of a HU: The user enters, searches, or selects an HU. The user enters serial numbers for serialized material, or the batch number for batch-managed material and counted quantity. The user taps the **Next HU** button to return to HU field to count the next HU. When all HUs are counted, the user taps the **Submit** button.

To count missing HUs: After the user counts all HUs physically in the bin, the uncounted HUs are booked on inventory document but cannot be physically found in the bin, then the user taps the **Missing HUs** button. A message "Mark all uncounted HUs as non-existing HUs" displays. The user taps the **Yes** button to mark all the uncounted HUs as missing. The statuses of the HUs are updated as "Missing". The user taps the **Submit** button to post counting to SAP.

To count a newly found HU which is not booked on the inventory document: The user enters or scans the HU. If the HU doesn't exist in the EWM system, a question stating



"HU does not exist. Create?" displays. The user taps the **Yes** button and then a Packaging Material prompt will display. A Packaging Material must be selected or entered in order to create a new HU. After the user enters the packaging material, the user then enters the serial if it serial controlled, or the batch and quantity if its batch-managed material. The user taps the **Next HU** button to return to HU field to count the next HU. When all HUs are counted, the user taps the **Submit** button.

To count loose materials in the bin allows both HUs and materials: The user taps **Enter** in a blank HU field. A pop-up message "Count Loose Material?" displays. The user taps the **Yes** button. If the material is batch-managed, then the user enters the batch and then the quantity. The user clicks on **Next HU** button to return to HU field to count next HU. When all HUs are counted, the user taps the **Submit** button.

To count loose material in the bin doesn't allow HU: The HU field will not be visible in this case. After the bin and the material is entered, the user then enters the serial if it serial controlled, or the batch and quantity if its batch-managed material. the user taps the **Submit** button to post the counting to SAP.

After the user taps the **Submit** button, the application returns to bin list so that user can count other materials in other bins.

The arrow in the upper left corner undoes the current entry and moves the cursor back to the previous prompt until you reach the menu.



## Technical Information

This lists the tables used for validations, searches and defaults by prompt.

Prompt	Table	Description
Resource	/SCWM/RSRC	Maintain Resource
Warehouse Order	ZRFGEN_PI_DOC_READ	Warehouse order associated with Physical Inventory Document
Bin	/SCWM/LAGP	Storage Bin
Material	ZRFGEN_PI_DOC_READ	RFgen custom function
Handling Unit	ZRFGEN_PI_DOC_READ	RFgen custom function
Packaging Material	/SAPAPO/MATPACK	Packing/Packaging Data
Batch	ZRFGEN_PI_DOC_READ	RFgen custom function
Quantity	N/A	N/A
Serial	N/A	N/A

## Customization Considerations

If you are planning on creating a new version of this application or modifying it for a customer, consider asking these questions to help prepare your list of customization requirements.

