

DataMAX Software Group, Inc.  
El Dorado Hills, CA 95762  
USA

# SAP EXTENDED WAREHOUSE MANAGEMENT – ISSUE TO PRODUCTION

This application helps issue components to a production order.

---

RFgen Functional Documentation

2021

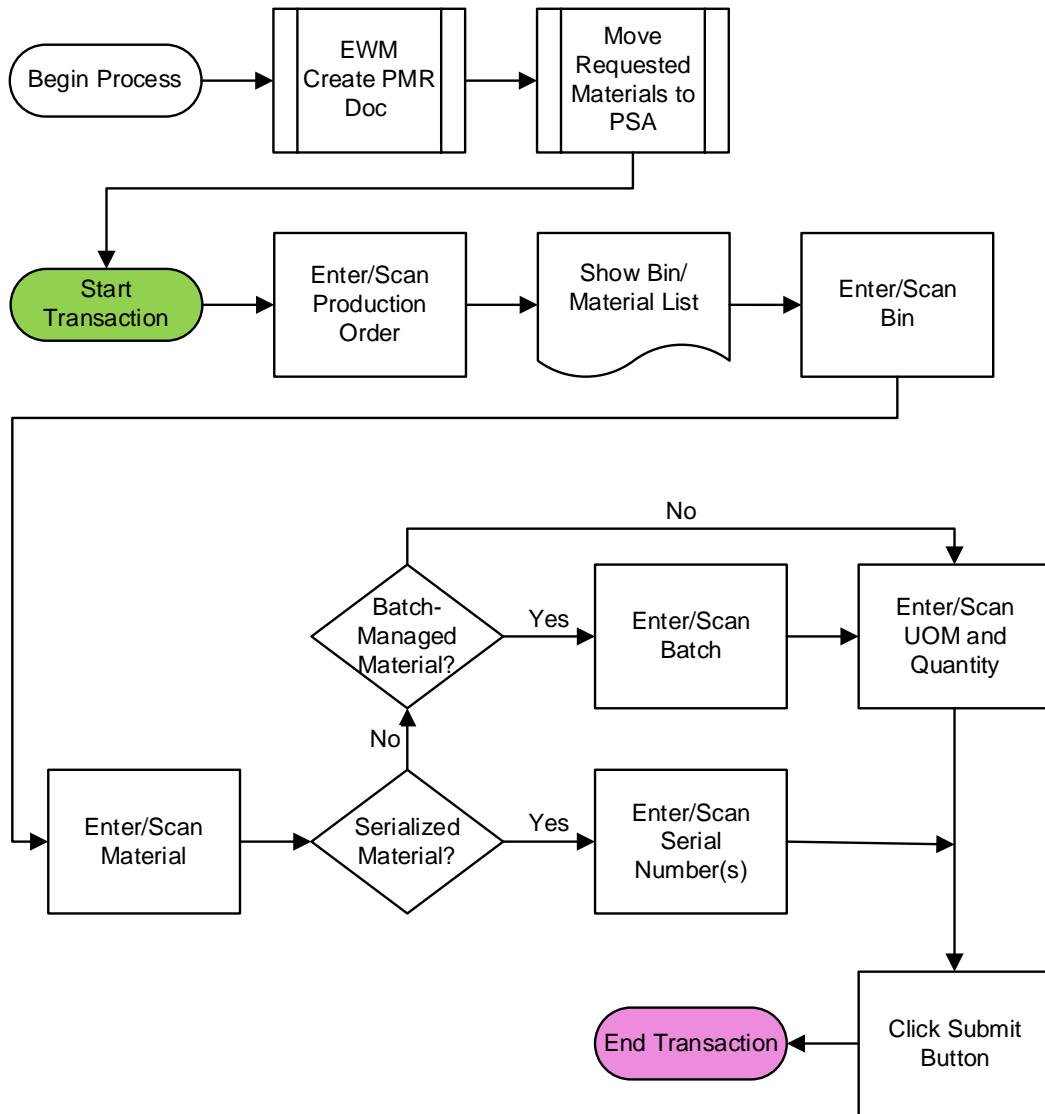
RFgen provides its customers SAP-validated, ready-to-use suites of Open Source applications and a development environment that can be used to create new apps or to modify existing apps.

This document describes the business workflow and technical information used in this application.

**SAP**<sup>®</sup> Certified  
Integration with SAP Applications

**RFgen.**

# SAP: Extended Warehouse Management (EWM) – Issue to Production



## FEWIP0200 – Issue to Production



This application is used to issue to materials to a production order.

### Description of Workflow

Before starting the **Issue to Production** application, the SAP EWM system generates a **Production Material Request (PMR)** document. This is followed by a **Move Requested Materials to PSA** (production supply area) task in SAP.

Once this task is done, the user can begin work in the **Issue to Production** application on their mobile device/desktop.

First, the user scans, enters, or searches for a production order in the Order field.

A list of the bins and materials at the production staging area displays. The user enters, scans, or searches for a bin in the Bin field.

The user scans, or enters, or searches for a material in the Materials field. The material must be in the entered bin. If the material is batch-controlled, the Batch field will be visible. If the material is serialized, the Serial field will be visible and the UOM and Quantity fields will be invisible.

If the Batch field is visible, the user scans, enters, or searches for a batch number that is assigned to the material specified.

If UOM and Quantity fields are visible, the user enters the Unit of Measure and Quantity to Issue. The Open Quantity to issue and the Max Available Quantity will be displayed. User may enter a quantity that is less than the Max Available Quantity.

If the Serial field is visible, the user scans, enters, or searches for serial number. The serial number must be in the entered bin and associated with the entered material. The user may continuously scan serial numbers as many as wanted. The scanned serial numbers will be shown in the list.

The user taps the **Submit** button. The **Submit** button will post the issued material to SAP. After the submission, the App reset and return to Bin field for user to issue other materials.

The arrow in the upper left corner will take the user back to the menu.



## Technical Information

This lists the tables used for validations, searches and defaults by prompt.

Prompt	Table	Description
Production Order	ZRFGEN_MFG_READ_PWR	Read Production Material Request for the production order
Bin	ZRFGEN_MFG_READ_PWR	Staging Bin
Material	ZRFGEN_MFG_READ_PWR	Required material
Batch	ZRFGEN_MFG_READ_PWR	Required batch
UoM	/SAPAPO/MARM	Units of Measure of the required material
Quantity	/SCWM/SELECT_STOCK	Quantity to Issue
Serial	/SCWM/SELECT_STOCK	Serial numbers to Issue

## Customization Considerations

If you are planning on creating a new version of this application or modifying it for a customer, consider asking these questions to help prepare your list of customization requirements.

