

# Microsoft Dynamics 365 INVENTORY MANAGEMENT – INVENTORY COUNTING

This application is used to confirm item quantities per journal line, and the final journal is posted with a reference to the responsible user.

---

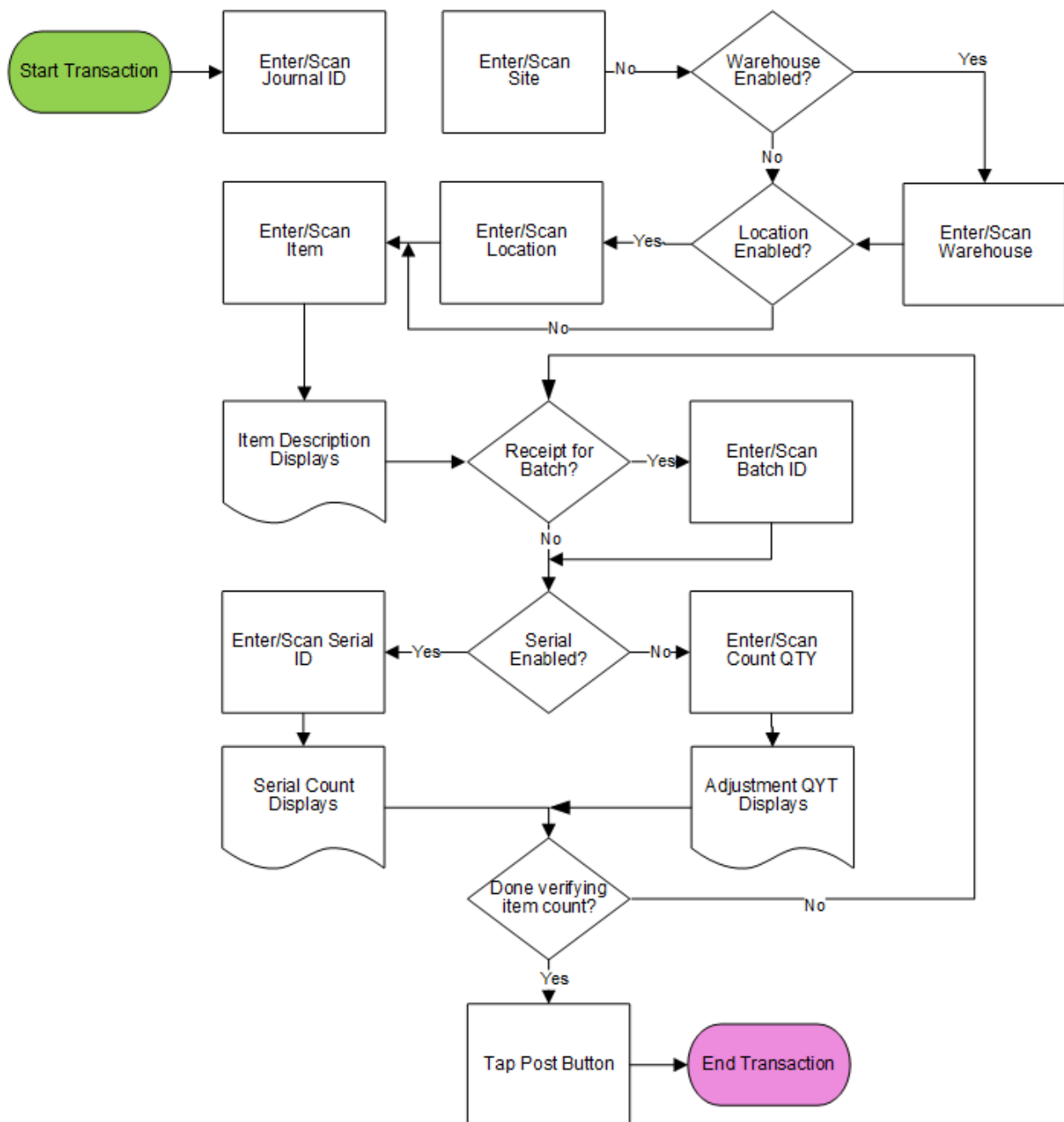
RFgen Functional Documentation  
2021

RFgen provides its customers Dynamics-validated, ready-to-use suites of Open Source applications and a development environment that can be used to create new apps or to modify existing apps.

This document describes the business workflow, technical information, and analysis questions for planning customizations to this application.



## Microsoft Dynamics: Inventory Counting Workflow



## FINCNT400 – Inventory Counting

This application is for the Inventory Management module of Dynamics 365 Finance & Operations. It transforms the lines of unposted Inventory Counting Journal. The user reviews and confirms item quantities per journal line, and the final journal is posted with a reference to the responsible user.



### Description of Workflow (Page 1)

First the user scans, enters or searches for a counting journal identifier (ID).

The user scans, enters or searches for a site.

The user scans, enters or searches for a warehouse (Whse).

The user scans, enters or searches for a location (Locn).

The user scans, enters or searches for an item identifier (ID).

If batch is enabled, the user scans or enters a batch number.

If serial is enabled, the user enters the serial number.

If serial number is not enabled, the user enters the quantity counted.

Left: *Example screen where item is batch controlled and serial controlled.*

## Description of Workflow (Page 1 - Continued)



The cursor loops through entering a batch, quantity, or serial per item number.

The user can change item number, or other inventory dimensions, and effect multiple lines of the journal.

If the user taps the **Post** button, all captured items are posted to a new *Inventory Counting Journal* entry.

If the user taps the **Exit** button the application will exit to the menu without posting.

Left: *Example screen where item is batch controlled but not serial controlled.*

## Technical Information

This lists the tables used for validations, searches, and defaults by prompt.

Prompt	Table
Journal definitions	INVENTJOURNALTABLE, INVENTJOURNALTRANS
Item definitions	ECORESRELEASEDPRODUCTV2ENTITY, ECORESTRACKINGDIMENSIONGROUPEntity, ECORESSTORAGEDIMENSIONGROUPEntity, INVENTTABLE
Site	INVENTSITE
Warehouse	INVENTLOCATION
Location	WMSLOCATION
Item on-hand validation	INVENTSUM, INVENTDIM

## Customization Considerations

If you are planning on creating a new version of this application or modifying it for a customer, consider asking these questions to help prepare your list of customization requirements.

1. Are there serial-controlled items?
2. Are there batch-controlled items?
3. Are users allowed to add lines to the Counting Journal outside the dimensions and items described in the journal lines?
4. How are Inventory Counting Journals generated and issued to users?

