

# Microsoft Dynamics 365 INVENTORY MANAGEMENT – INVENTORY ADJUSTMENT

This application creates and posts new journal entries for On-Hand inventory. On-Hand inventory adjustments can be made by the item's site, warehouse, batch number, or other Active Tracking Dimensions.

---

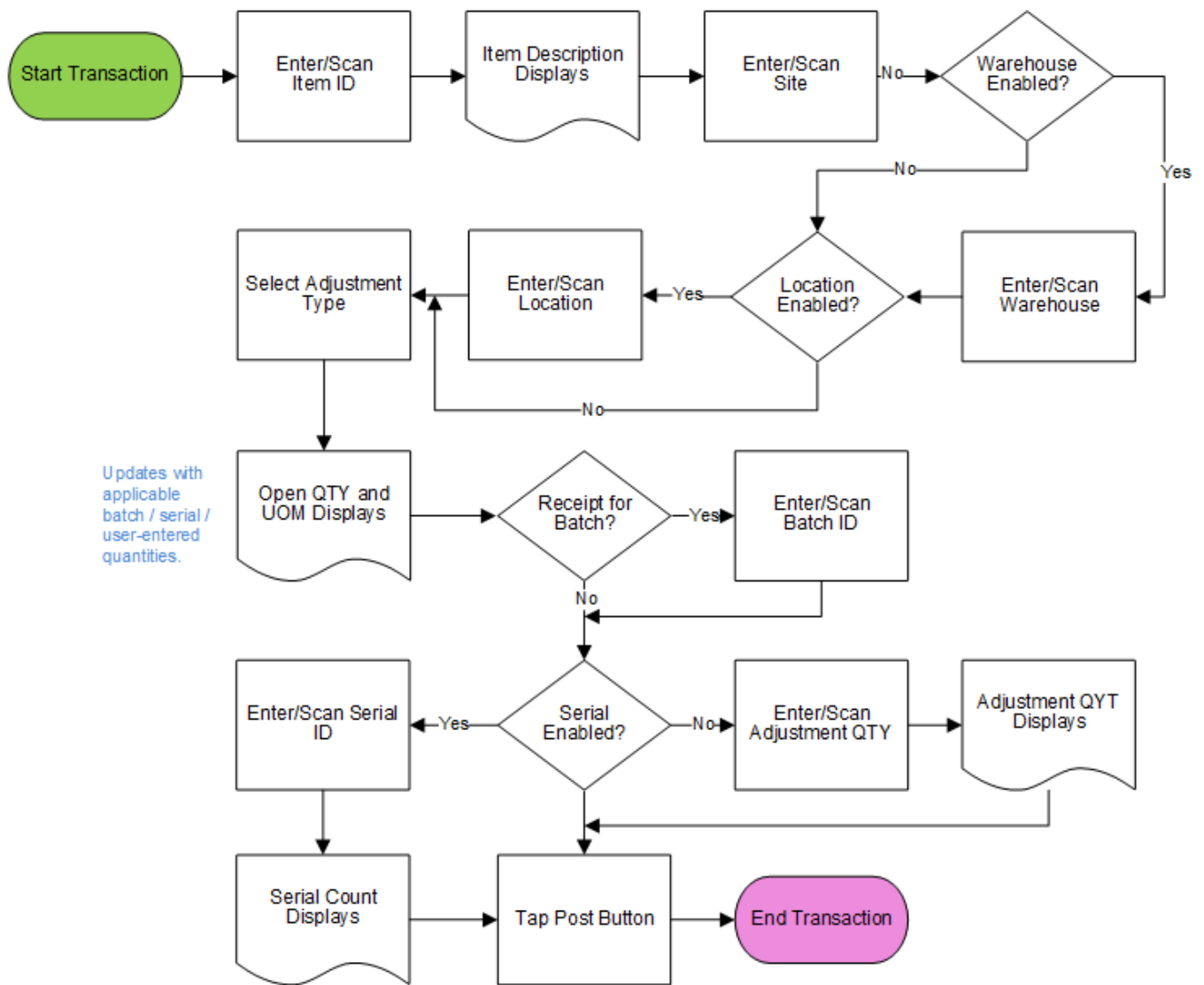
RFgen Functional Documentation  
2021

RFgen provides its customers Dynamics-validated, ready-to-use suites of Open Source applications and a development environment that can be used to create new apps or to modify existing apps.

This document describes the business workflow, technical information, and analysis questions for planning customizations to this application.



## Microsoft Dynamics: On-Hand Inventory Adjustment Workflow



## FINADJ400 – On-Hand Inventory Adjustment

This application is developed for the Inventory Management module of Microsoft Dynamics 365 Finance & Operations. It creates and posts a new Inventory Adjustment Journal for On-Hand items. On-Hand items can have their inventory counts positively or negatively updated according to dimensions such as site, warehouse, batch number, and more.



### Description of Workflow (Page 1)

First the user scans, enters or searches for an item to be adjusted.

Fields for entering a warehouse, location, batch, and serial number are dependent on the item's Active Tracking Dimensions.

The user scans, enters or searches for a site.

If the warehouse is enabled, the user scans, enters or searches for a warehouse.

If the location is enabled, the user scans, enters or searches for a location.

The user selects *positive* or *negative* for an adjustment type.

If batch is enabled, the user scans or enters a batch number.

If serial is enabled, the user scans or enters a serial number. If serial is not enabled, the user enters the adjustment quantity.

Left: *Example screen where item is batch controlled, but not serial controlled.*



## Description of Workflow (Page 1 - Continued)



If the user taps the **Post** button, all captured items are posted to a new *Inventory Adjustment Journal* entry.

If the user taps the **Exit** button the application will exit to the menu without posting.

Left: *Example screen where item is batch and serial controlled.*

## Technical Information

This lists the tables used for validations, searches, and defaults by prompt.

Prompt	Table
Item definitions	ECORESRELEASEDPRODUCTV2ENTITY, ECORESTRACKINGDIMENSIONGROUPEntity, ECORESSTORAGEDIMENSIONGROUPEntity, INVENTTABLE
Site	INVENTSITE
Warehouse	INVENTLOCATION
Location	WMSLOCATION
Item on-hand validation	INVENTSUM

## Customization Considerations

If you are planning on creating a new version of this application or modifying it for a customer, consider asking these questions to help prepare your list of customization requirements.

1. Are there serial-controlled items?
2. Are there batch-controlled items?
3. Are there default sites/warehouses/etc. users are expected to transfer to/from?
4. Should users be allowed transfer to/from serial or batch numbers?  
Are they allowed to change an item to a specific serial or batch allocation?

