

# Microsoft Dynamics 365 PURCHASING & RECEIVING – PURCHASE ORDER RECEIVING

This application receives Purchase Order (PO) items to an inventory receipt including site, warehouse, batch number, and other inventory tracking dimensions.

---

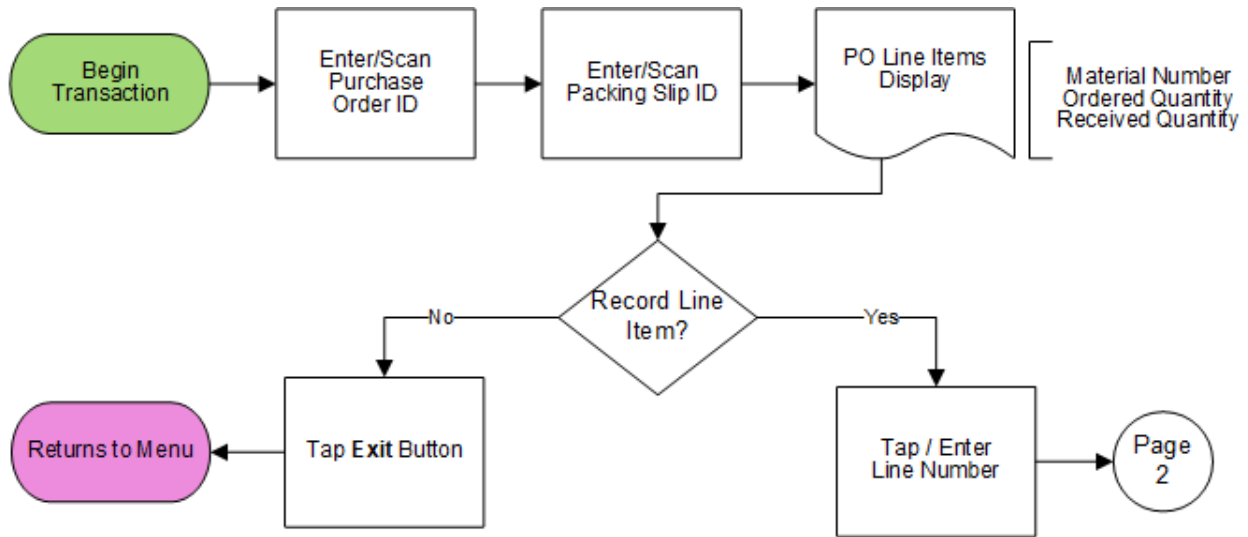
RFgen Functional Documentation  
2021

RFgen provides its customers Microsoft Dynamics-validated, ready-to-use suites of Open Source applications and a development environment that can be used to create new apps or to modify existing apps.

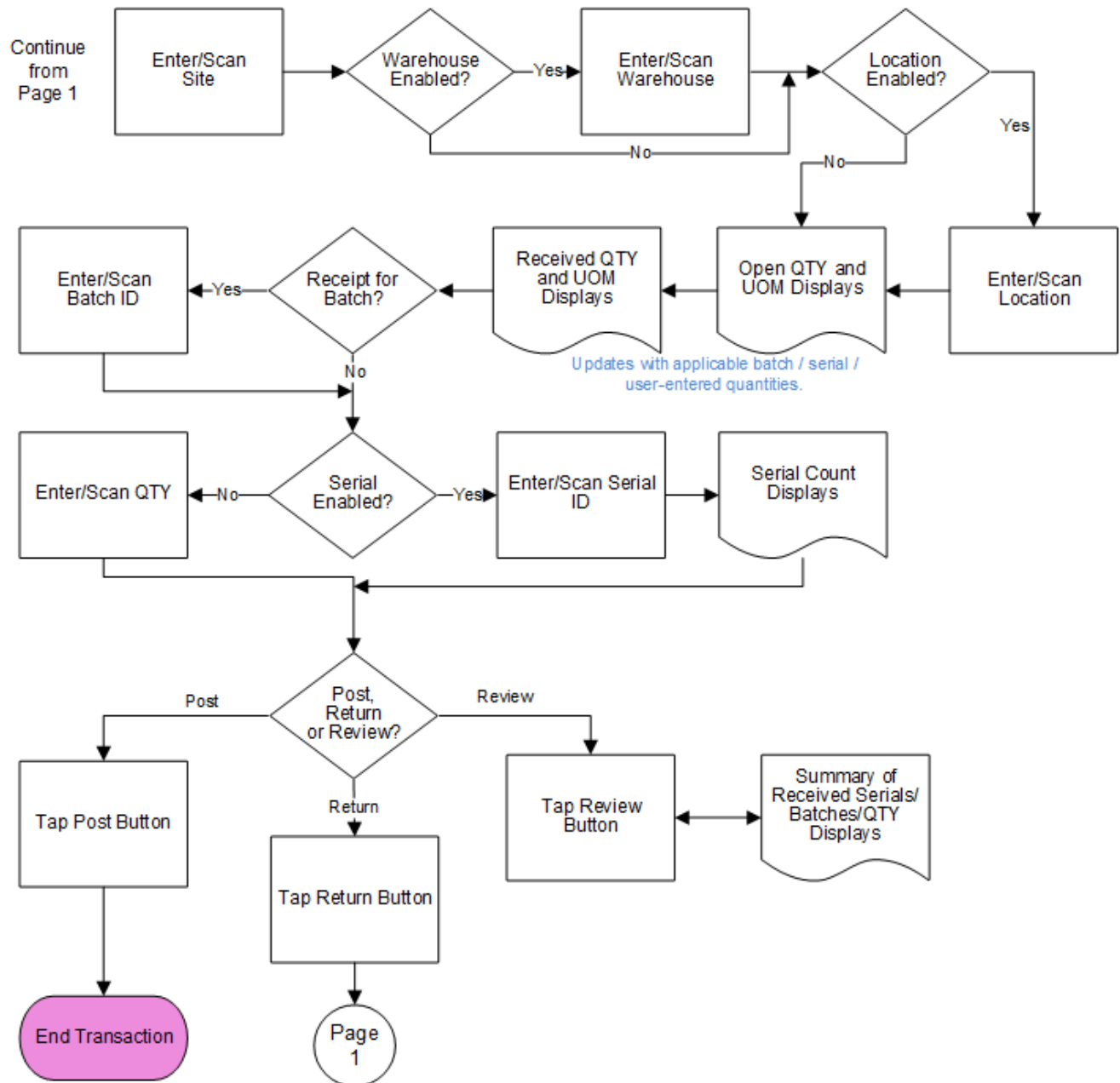
This document describes the business workflow, technical information, and analysis questions for planning customizations to this application.



## Microsoft Dynamics: Purchase Order Receiving Workflow (1 of 2)



## Microsoft Dynamics: Purchase Order Receiving Workflow (2 of 2)



## FIBPOR400 – PO Receiving

This application is developed for the Procurement and Sourcing module of Dynamics 365 Finance & Operations. It receives Purchase Order (PO) items to an inventory receipt including site, warehouse, batch number, and other inventory tracking dimensions.



### Description of Workflow (Page 1)

First the user scans, enters or searches for a purchase order identification (PO ID).

The user scans or enters the packing slip (Pack Slip) ID that this inventory receipt will be submitted under.

The list of PO lines by item display.

The user taps or selects the line item to be received and is taken to Page 2.

The **Exit** button exits the application without posting or saving changes.

**Note:** If one or more line items were registered (received) on page 2, then the **Post** button displays. The user can tap the Post button to submit the received line items.

## Description of Workflow (Page 2)

Fields for entering a receiving warehouse, location, batch number, and serial number are dependent on the item's Active Tracking Dimensions.



First the user scans, enters or searches for a receiving site.

If the warehouse is enabled, the user scans, enters or searches for a receiving warehouse (Whse).

If the receiving location (Locn) is enabled, the user scans, enters or searches the location.

The open quantity (QTY), receive quantity (Rec QTY) and unit of measure display in accordance to the batch number and/or serial number, or quantity manually entered by the user.

If batch is enabled, the Batch field displays, and the user enters a batch number to be registered.

If the serial is enabled, the Serial field displays, and the user scans or enters a serial number. (The serial number tracks multiple entries and displays the total received serial count.)

If the serial is not enabled, a quantity (QTY) field displays, and the user scans or enters the amount to be registered.

*Left: Example of PO Receiving with batch and quantity enabled, but not serial-enabled.*



## Description of Workflow (Page 2 - Continued)

After at least one receipt line has been registered, the **Post** button displays.



If the user taps the **Post** button, all registered receipt lines are submitted, then the user is taken back to page 1.

If the user taps the **Review** button, it takes the user to page 3 (not shown in this document).

Page 3 displays a summary of received batches and serials.

The user taps the **Return** button on page 3 to return to page 2.

If the user taps the **Return** button, it takes the user from page 2 to page 1, but does not submit registered line items.

*Example of page 2 of PO Receiving where the batch and serial are enabled and the user entered the values to be registered.*

## Technical Information

This lists the tables used for validations, searches, and defaults by prompt.

Prompt	Table
PO ID	PURCHTABLE
Vendor Name	PURCHTABLE
PO Lines	PURCHLINE
Item definitions	ECORESRELEASEDPRODUCTV2ENTITY, ECORESTRACKINGDIMENSIONGROUPENTITY, ECORESSTORAGEDIMENSIONGROUPENTITY, INVENTTABLE
Site	INVENTSITE
Warehouse	INVENTLOCATION
Location	WMSLOCATION
Ordered QTY	PURCHLINE
Received QTY	PURCHLINE
Open QTY	PURCHLINE

## Customization Considerations

If you are planning on creating a new version of this application or modifying it for a customer, consider asking these questions to help prepare your list of customization requirements.

1. Are there serial-controlled items?
2. Are there batch-controlled items?
3. Are there default sites/warehouses/etc. users are limited to at receiving?
4. Are receivers allowed to register partial receipt?
5. Are receivers posting a final inventory receipt, or just registering inventory through an intermediate process? (i.e., "Item Arrival Journal" entry)

