

DataMAX Software Group, Inc.
El Dorado Hills, CA 95762
USA

Oracle E-Business Suite Manufacturing Work-In-Process (WIP) Complete

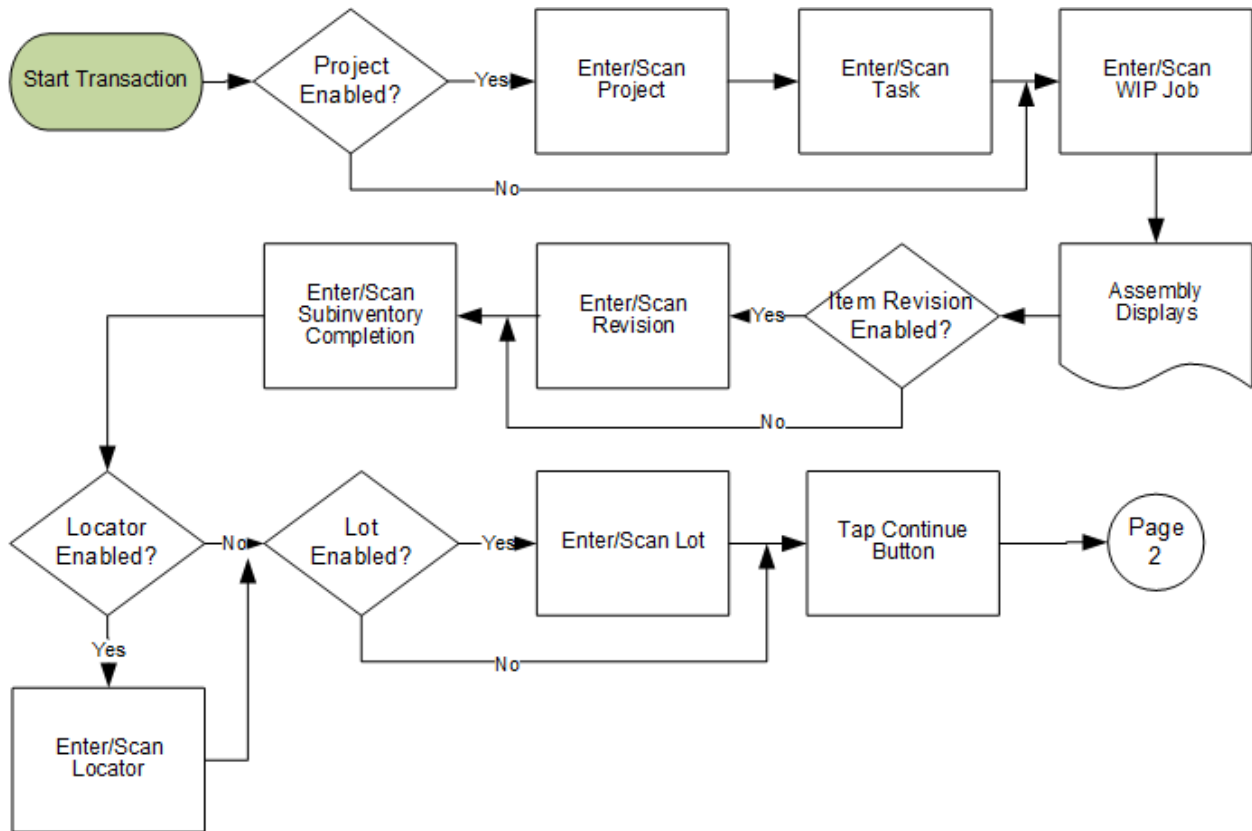
This application is used to complete work orders.

RFgen Functional Documentation 2021

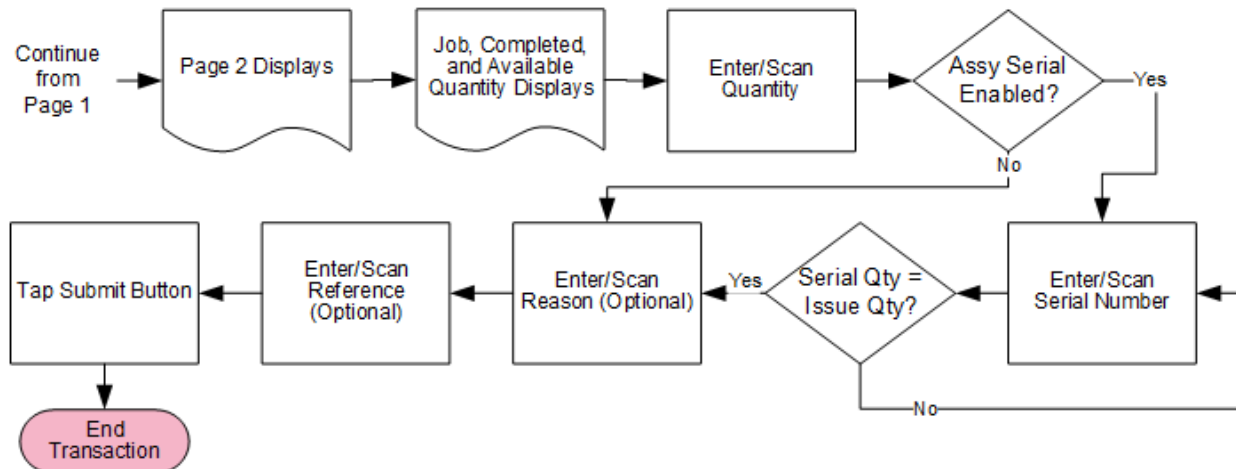
RFgen provides its customers Oracle-validated, ready-to-use suites of Open Source applications and a development environment that can be used to create new apps or to modify existing apps.

In this document is a description of the application workflow details, technical information, and workflow analysis questions for planning customizations to this application.

Oracle EBS: WIP Complete (1 of 2)



Oracle EBS: WIP Complete (2 of 2)



FMFGWC0300 - Manufacturing - WIP Complete

This application is used complete a Work-In-Process job and receive the assembly into inventory. A work-in-progress (WIP) Completion transaction is recorded in Oracle E-Business Suite.



Workflow Details (Page 1)

If the inventory org is project-enabled, the user will enter, scan, or search and select the project and task.

The user then scans, enters, or searches the WIP Job.

The assembly item name for work order is displayed.

If the item is revision-enabled, the user enters the assembly revision.

The user selects or enters the completion subinventory.

Next if the subinventory is locator-enabled, then the user will search, scan, or enter the locator.

If the assembly is lot-enabled, the user will be requested to enter the lot number.

The user taps the **Continue** button which takes the user to page 2.

The arrow in the upper left corner takes the user back to the menu.



Workflow Details (Page 2)



Page 2 displays.

The job quantity, completed quantity, and available to complete quantity is displayed for the work order.

The user enters the quantity to complete.

If the assembly is serial-enabled, then the user enters the serial number.

Next, the user scans, enters, or searches the reason in the Reason field.

Lastly, the user scans, enters, or searches the application reference in the Reference field.

Finally, the user taps the **Submit** button.

The **Submit** button uploads the transaction to save resource for work order in the EBS system.

The << arrow in the upper left corner takes the user back the user back to the prior screen.

RFgen.

Technical Information

The following describes the tables used for validation, search lists, or functions for a given prompt in this application.

Prompt	Validation / Search – Tables / Functions	Default Property/ In-Code Defaults
Project	PA_PROJECTS_ALL	
Task	PA_TASKS	
Job	WIP_ENTITIES	
Assembly	MTL_SYSTEM_ITEMS_B	
Revision	MTL_ITEM_REVISIONS_VL	
Operation Sequence	WIP_OPERATIONS	
Subinventory	MTL_SECONDARY_INVENTORIES	
Locator	MTL_ITEM_LOCATIONS_KFV	
Lot	MTL_LOT_NUMBERS	
Serial	MTL_SERIAL_NUMBERS	
Reason	MTL_TRANSACTION_REASONS	
Macro		TIMII0302 – MTL_TRANSACTIONS_INTERFACE, MTL_TRANSACTION_LOTS_INTERFACE, MTL_SERIAL_NUMBERS_INTERFACE, INV_TXN_MANAGER_PUB .process_Transactions

Customization Considerations

If you are planning on creating a new version of this application or modifying it, the following questions should be considered before you start.

1. Does the user want to see some other information related to the work order completion on the screen?
2. What processing options are set for WIP Completion?
3. Is Locator control turned on at item or Subinventory level?
4. Will the assemblies be Lot controlled?
5. Will the assemblies be Serial controlled?
6. Will the assemblies be revision controlled?
7. Is there an option to enter a separate Unit of Measure for the assemble

