

Oracle JD Edwards WORK ORDER RATE COMPLETION

This application allows the completion of parts against a specific work order, handling multiple steps during the process.

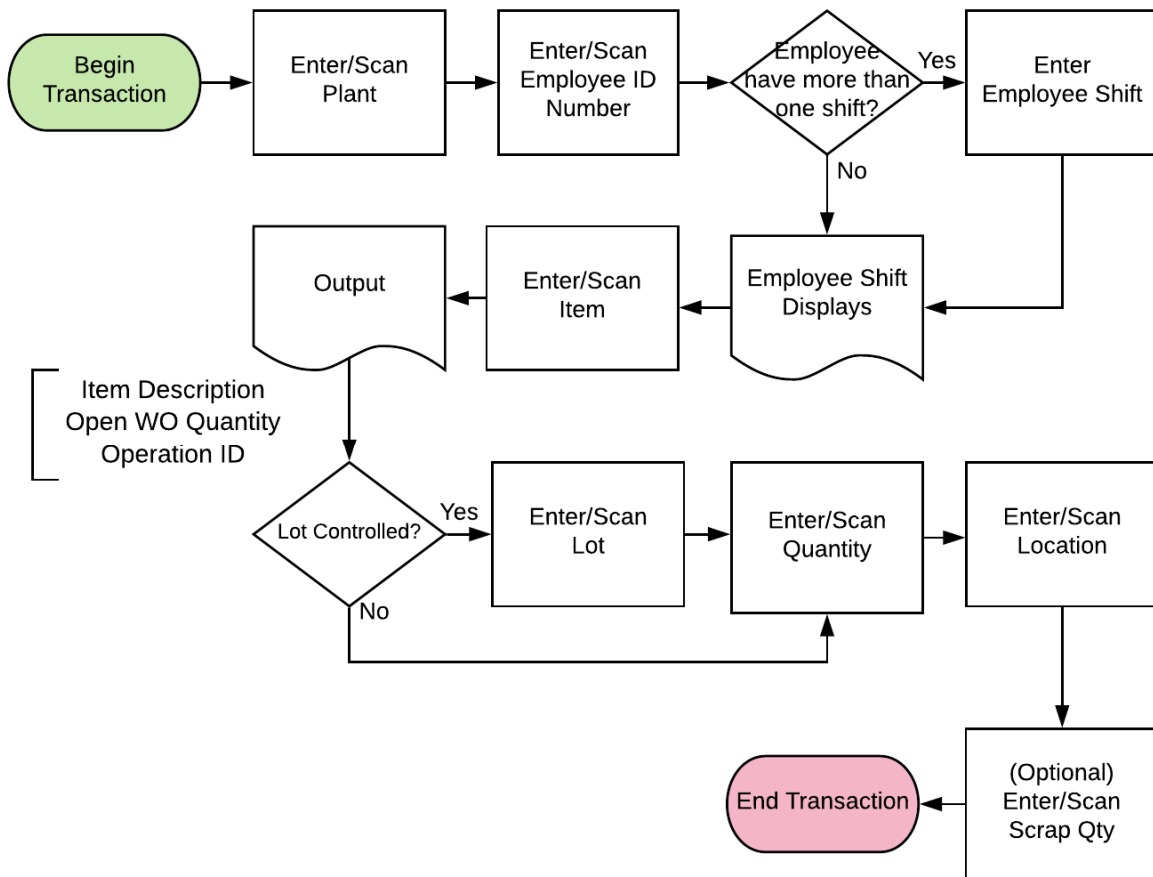
The work order is updated (including rate completions), raw material is issued, time entry is processed, and finished goods inventory is increased.

RFgen Functional Documentation
2019

RFgen provides its customers Oracle-validated, ready-to-use suites of Open Source applications and a development environment that can be used to create new apps or to modify existing apps.

In this document is a description of the application and the workflow details and technical information this application.

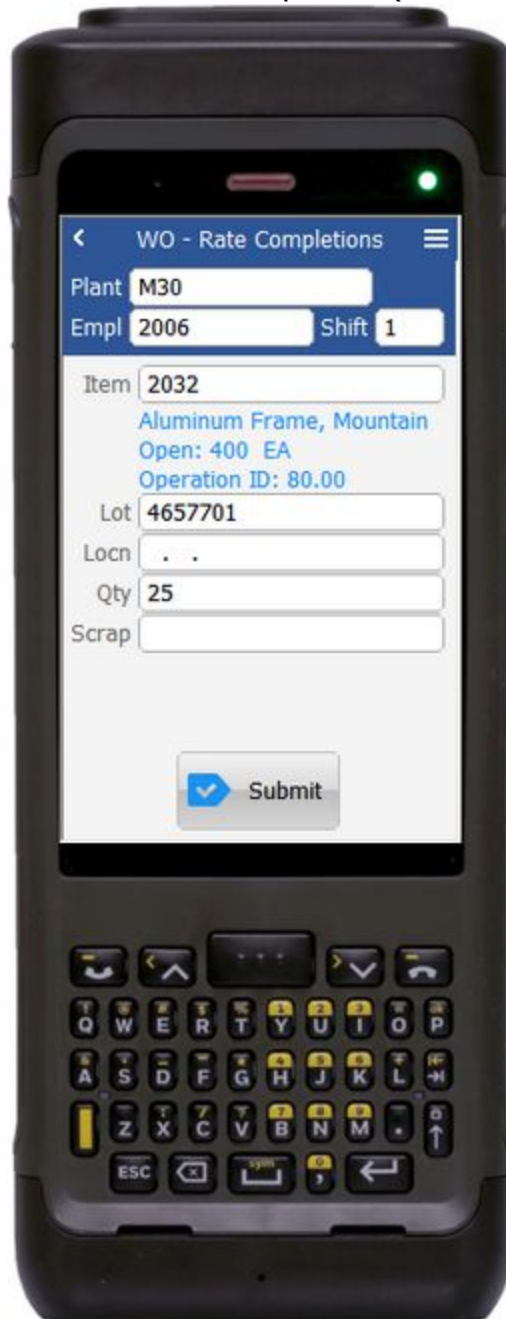
JD Edwards: Work Order (WO) - WO Rate Completion Workflow



FWORC0100 WO – Work Order Rate Completions

This application allows the completion of parts against a specific work order, handling multiple steps during the process.

The work order is updated (including rate completions), raw material is issued, time entry is processed, and finished goods inventory is increased.



Description of Workflow

First the user scans, enters, or searches for a plant if one does not default from the user profile.

The user must enter the employee ID (Empl) and shift. The shift may auto-populate if there is only one shift for the employee.

The user scans, enters, or searches the item being used. Upon entry, the following information will display: Item description, Open WO quantity, and Operation ID.

If the item is lot controlled, the user scans or enters the Lot.

The user enters, scans or searches the location (Locn) and quantity (Qty) completed.

Optional: User may enter the Scrap quantity.

The **Submit** button sends the transaction to JDE.

The arrow in the upper left corner takes the user back to the menu.



Technical Information

The following describes the tables used for validation, search lists, or functions for a given prompt in this application. If applicable, the default property is also included.

Prompt	Validation / Search – Tables / Functions	Default Property / in-code defaults
Plant	F41001	User Profile
Empl (employee)	F0101	
Shift	UDC 07 SH (for A9.2) or UDC 06 SH (all other versions)	
Item	F4801	
Lot	F41021	
Locn (location)	F3111	
Qty (quantity)	F4801	
Scrap (quantity)	Optional numeric for scrap quantity entry	

Customization Considerations

If you are planning on creating a new version of this application or modifying it for a customer, consider asking these questions to help prepare your list of customization requirements.

1. Is the following setup correctly in JDE?
 - Employee Number / Labor Rate?
 - Item / Rate?
 - Shift Information?

