

Oracle JD Edwards WORK ORDER COMPONENT SCRAP

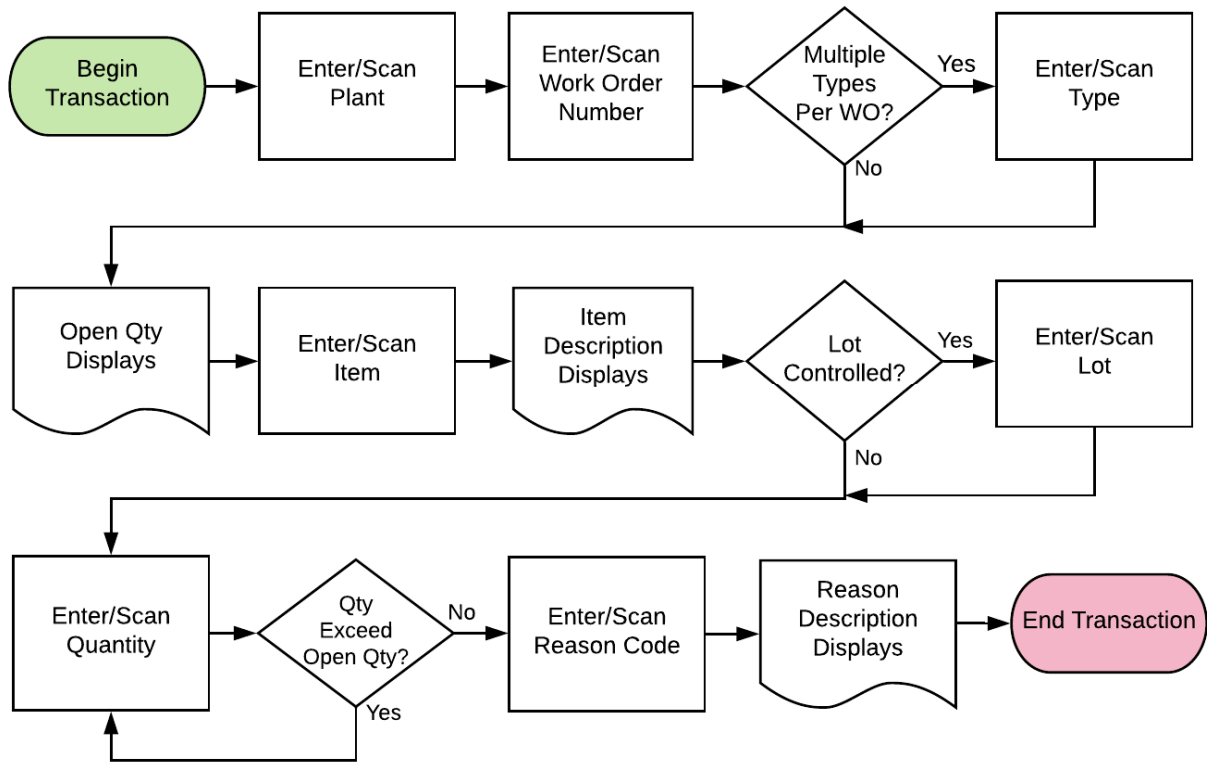
Work orders are used to request the manufacturing of a specific quantity of an item from other components or materials. This application scraps materials that were issued to a work order.

RFgen Functional Documentation
2019

RFgen provides its customers Oracle-validated, ready-to-use suites of Open Source applications and a development environment that can be used to create new apps or to modify existing apps.

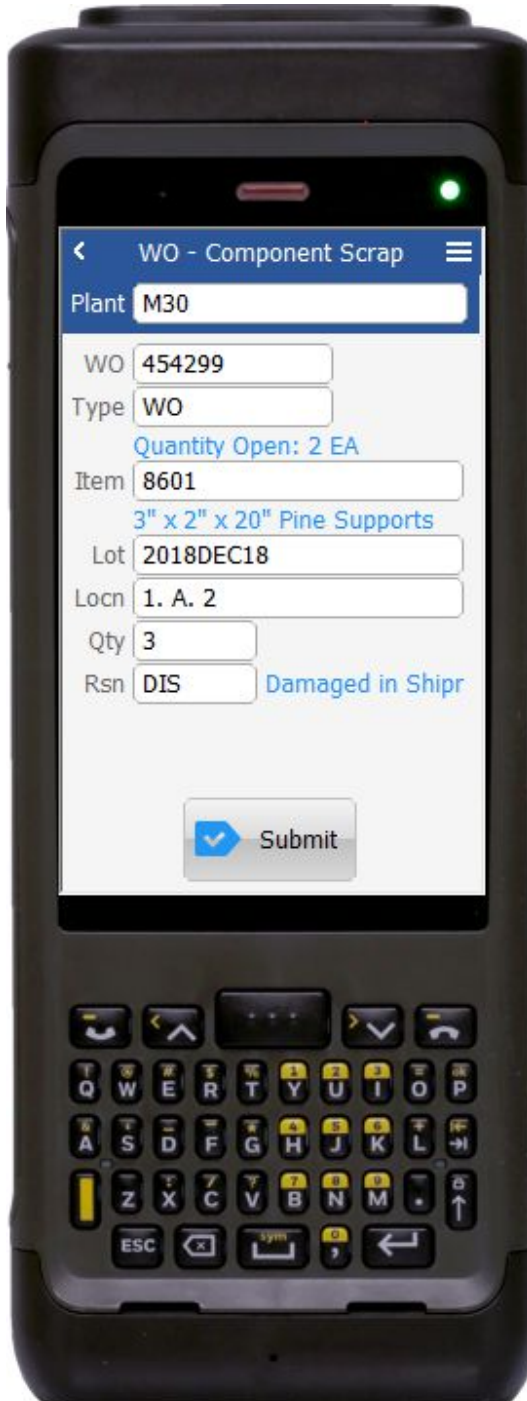
This document describes the business workflow and technical information used in this application.

JD Edwards: Work Order (WO) - Component Scrap Workflow



FWOCS0100 Work Order – Work Order Component Scrap

This application scraps materials that were issued to a work order.



Description of Workflow

First the user scans, enters, or searches for a plant if one does not default from the user profile.

The user scans, enters, or searches and selects the work order number (WO).

If more than one Type exists, then the user scans, enters, or searches and selects the work order type. Otherwise, the default type will display in the Type field.

Then the number of open work orders displays.

The user scans, enters, or searches and selects the Item.

The item description displays.

If the item is lot-controlled, the Lot field displays. The user must scan, enter, or search and select the Lot field.

If the item is not lot-controlled, the Lot field will not display.

The user then scans, enters, or searches and selects the location (Locn).

The user enters the quantity (Qty) to be scrapped. If the amount is greater than the on hand (Open Quantity) then the user is not allowed to proceed until the quantity is changed.



The user enters the reason code and the reason description displays.

To update the inventory, the user taps the **Submit** button.

The arrow in the upper left corner will take the user back to the menu.

Technical Information

The following describes the tables used for validation, search lists, or functions for a given prompt in this application. If applicable, the default property is also included.

Prompt	Validation / Search – Tables / Functions	Default Property / in-code defaults
Plant	F41001, F0006	RFgen User Profile
Work Order (WO)	F4801 oWO.Search.F4801_DOCO	
Type	F4801 oWO.Search.F4801_DCTO	
Item	F3111, F4102 oWO.Search.F3111_LITM	
Location	F41021 oWO.Search.F41021_LOCN	Item Location File
Qty	"Amount on hand" is retrieved by txtLOCN_OnEnter())	NA
Rsn	oWO.Search.UDC("42", "RC")	NA

This application reads records of "item branch" table (F4102) and records of "shop floor" tables (F4801 – "work order master file" and F3111 – "work order parts list"). Moreover, this application invokes JDE vanilla business functions that:

- Relieves inventory
- Updates the Item Location File table (F41021)
- Writes records to the Item Ledger File table (F4111)
- Updates the Production Cost table (F3102)
- Updates unaccounted units in the Work Order Parts List table (F3111)
- Writes general ledger transaction in the Account Ledger table (F0911)



Customization Considerations

If you are planning on creating a new version of this application or modifying it for a customer, consider asking these questions to help prepare your list of customization requirements.

1. At what point (i.e. operation sequence) in the manufacturing process are components needed?
2. What are the specified quantities consumed by the operation?
3. Did the operation consume more quantities than that specified in the routing instructions?
4. From which aisles or bins should materials be sourced?
5. From which lots should materials be sourced?
6. Did an operation consume items that are not listed in the routing instructions?

