

Oracle JD Edwards WAREHOUSE PICK CONFIRM BY SALES ORDER

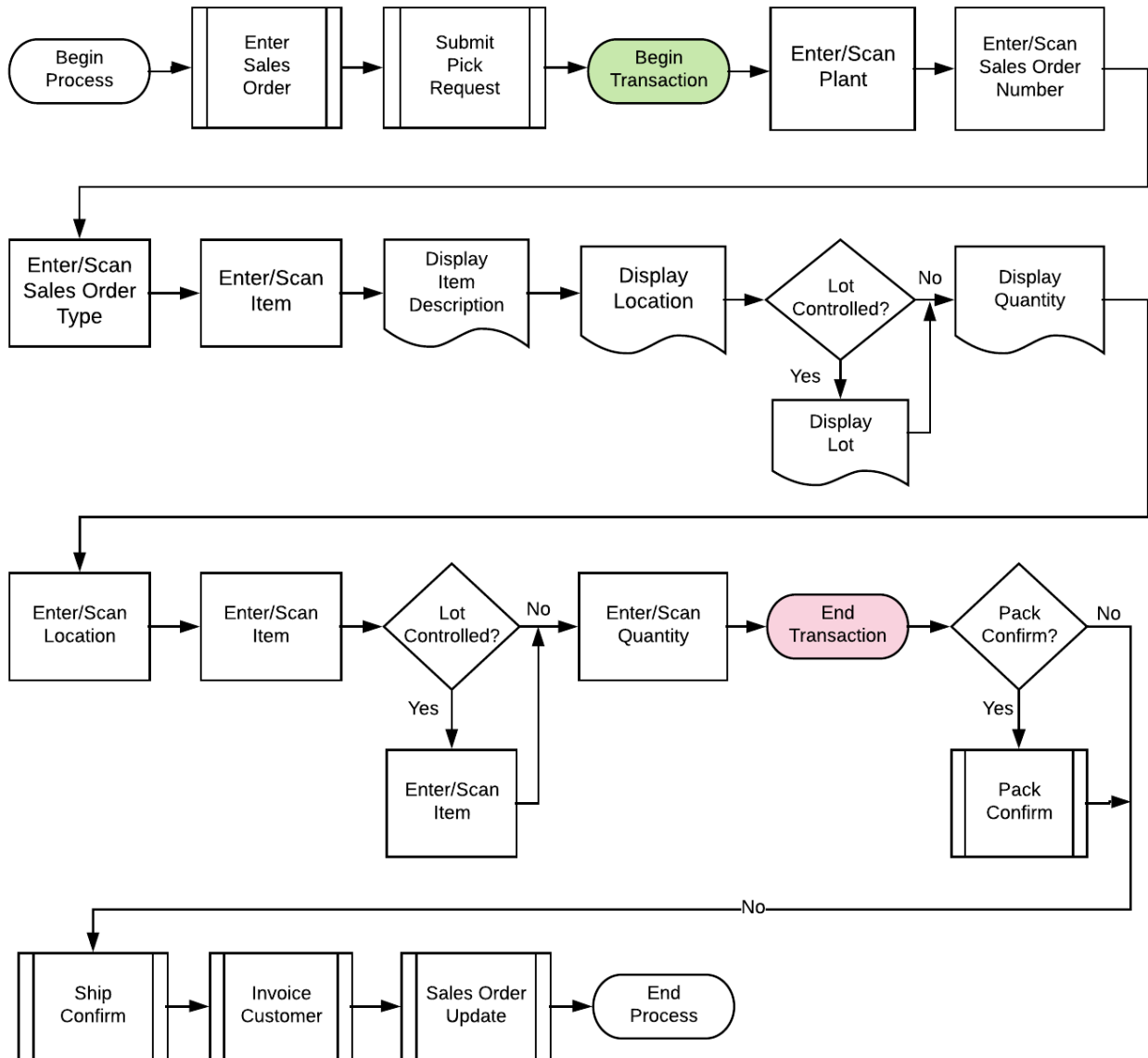
This application uses the Sales Order (SO) number to locate pick requests. It displays the suggested pick locations and quantities for an item thus facilitating the user in transferring the inventory from the warehouse location to the shipping location.

RFgen Functional Documentation
2019

RFgen provides its customers Oracle-validated, ready-to-use suites of Open Source applications and a development environment that can be used to create new apps or to modify existing apps.

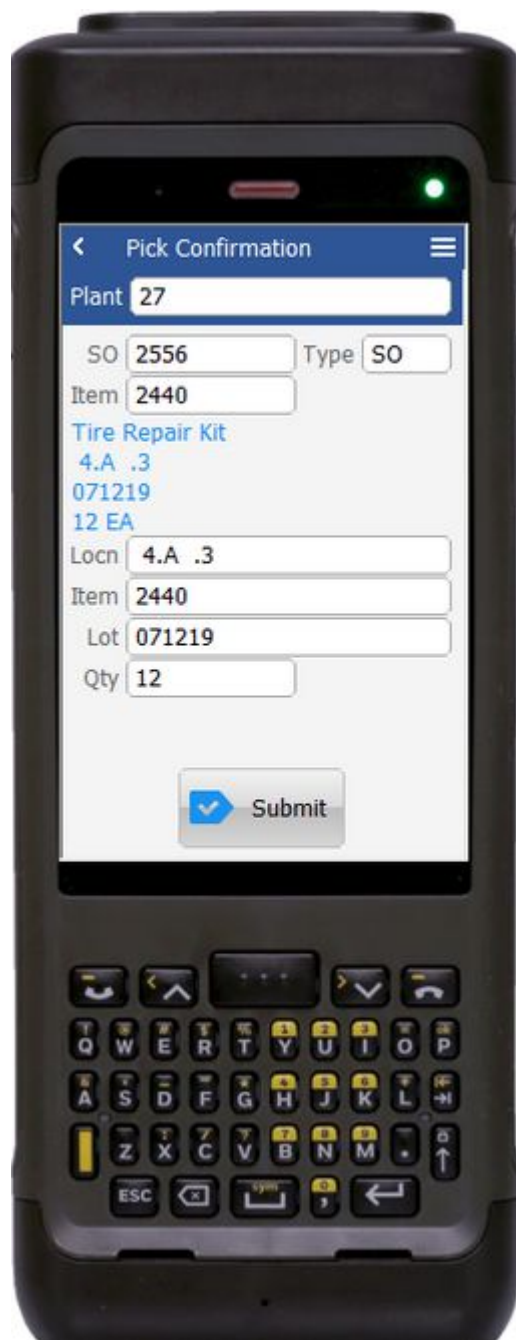
This document describes the business workflow and technical information used in this application.

JD Edwards: Warehouse (WH) - Pick Confirm By Sales Order Workflow



FWHCS0100 – WH – Pick Confirm By SO

This application allows using the Sales Order number to locate pick requests. It displays the suggested pick locations and quantities for an item thus facilitating the user in transferring the inventory from the warehouse location to the shipping location.



Description of Workflow

First the user scans, enters, or searches for a plant if one does not default from the user profile.

Next the user scans, enters, or searches and selects the sales order (SO) number.

The SO type displays.

The user scans, enters, or searches and selects the item number.

The item description, suggested location, Lot number (if item is Lot controlled) and suggested quantity with the primary UOM display.

By viewing the suggested pick information provided by the application, the user enters the location (Locn), the Item number and Lot number and pick quantity (Qty).

The user confirms all the entries are correct and taps the **Submit** button to upload the data to JDE for processing and at which time the form will reset by clearing all fields.

The arrow in the upper left corner takes the user back to the menu.



Technical Information

The following describes the tables used for validation, search lists, or functions for a given prompt in this application. If applicable, the default property is also included.

Default Property / in-code defaults	Validation / Search – Tables / Functions	Default Property / in-code defaults
Plant	F4611	RFgen user profile, R2MCU
SO	F4611	R2DOCO
Type	F4611	R2DCTO
Item	F4611	R2LITM
Locn	F4611	R2FLOC
Lot	F4611	R2FLOT
Qty	F4611	R2TQTY

Customization Considerations

If you are planning on creating a new version of this application or modifying it for a customer, consider asking these questions to help prepare your list of customization requirements.

1. Does the Branch default from the RFgen userid?
2. What EnterpriseOne version of P4617 will be used?
3. What processing options are set to locate pick requests i.e. Suggestion Status (alias R2PSTB), Program mode (alias R2TYFL) and Phase control mode (alias R2PHAS)?
4. When picked suggestions are confirmed?
5. What should be the next status for Sales Order lines?

