

Oracle E-Business Suite Oracle Process Manufacturing Batch Input

This application is developed for the Oracle Process Manufacturing (OPM) module of Oracle EBS. It processes batch inputs and performs work-in-process (WIP) Issue transactions against Item Type-Ingredients.

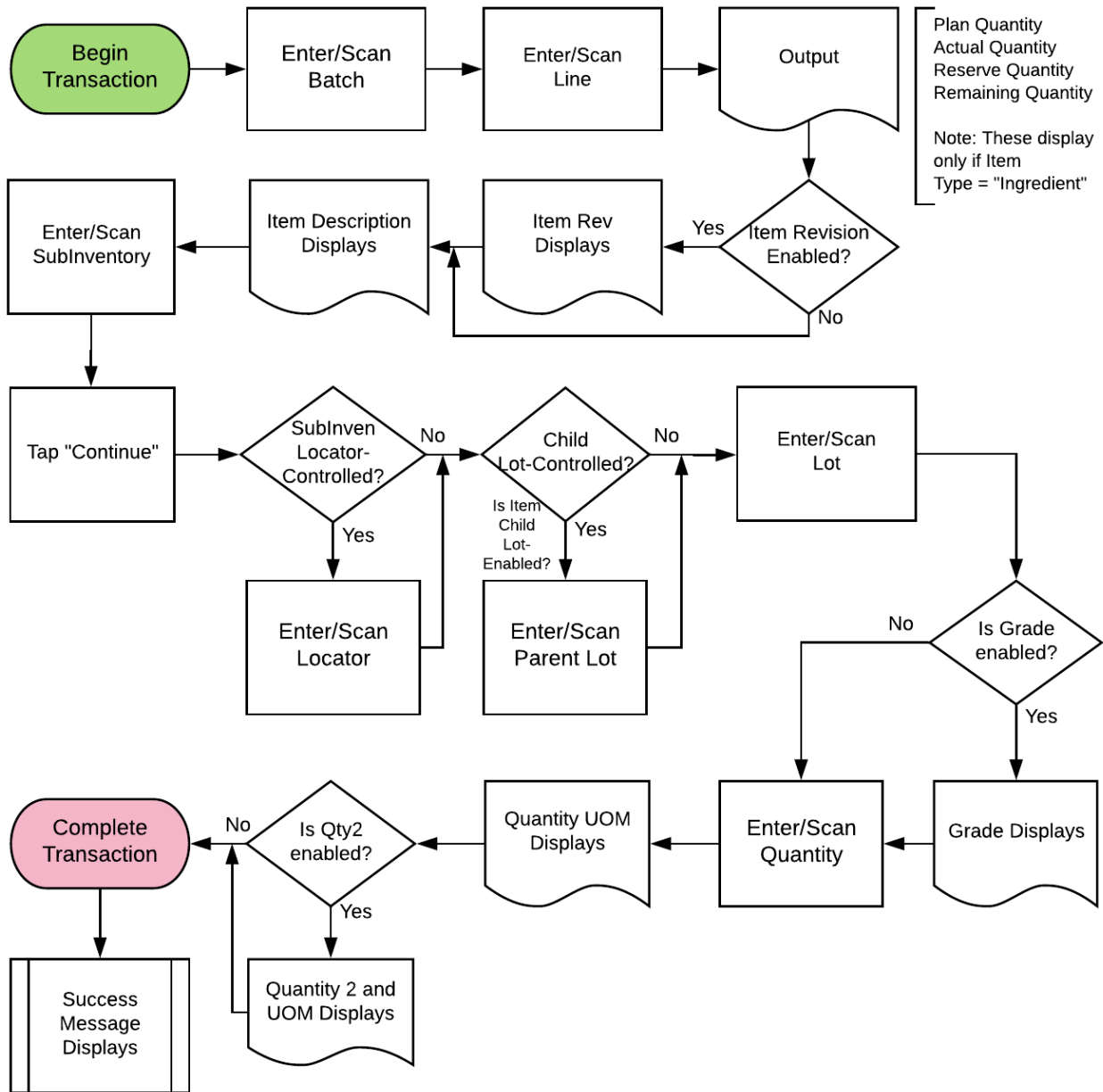


RFgen Functional Documentation 2019

RFgen provides its customers Oracle-validated, ready-to-use suites of "Open Source" applications and a development environment that can be used to create new apps or to modify existing apps.

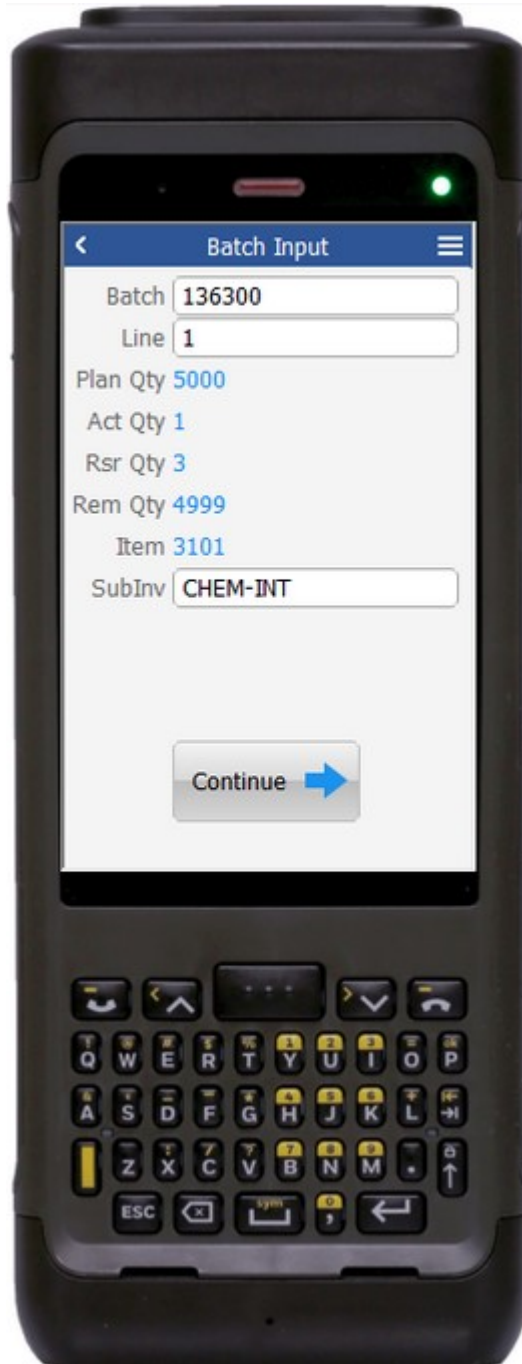
In this document is a description of the application workflow details, technical information, and workflow analysis questions for planning customizations to this application.

Oracle EBS: OPM – Batch Input Workflow



FOPMII0302 OPM – Batch Input

This application processes batch inputs and performs work-in-process (WIP) Issue transactions against Item Type-Ingredients.



Workflow Details (1 of 2)

First the user scans, enters, or searches for the Batch Number.

Next the user scans, enters, or searches the line numbers associated with the selected batch. This list only shows the lines with item-type as "Ingredient".

The plan quantity (Plan Qty), actual quantity (Act Qty), reserve quantity (Rsr Qty) and remaining quantity (Rem Qty) display.

Post selecting the line field will also display the item and revision associated with the line.

If the item is not revision-enabled- revision will not be visible.

Next, user will search, scan or enter the sub-inventory. After selecting the sub-inventory, continue button will appear on the screen.

The Continue button takes the user to page 2.

The arrow in the upper left corner takes the user back to the menu.



Workflow Details (2 of 2)

Page 2 is a continuation of the Batch and Line Type entered on Page 1.

If the sub-inventory is locator-enabled, the user will enter/search or scan the locator.

If the selected item is child lot-enabled, then the user will enter both parent lot and child lot associated with the item. Otherwise, the parent lot will not be visible on the screen and the user will enter the lot number.

If the item is grade-enabled, then the default grade value for the item against the selected organization will display in a Grade field.

The user enters the quantity which quantity will be validated. If the secondary UOM is enabled for the item, the secondary quantity will be calculated and defaulted.

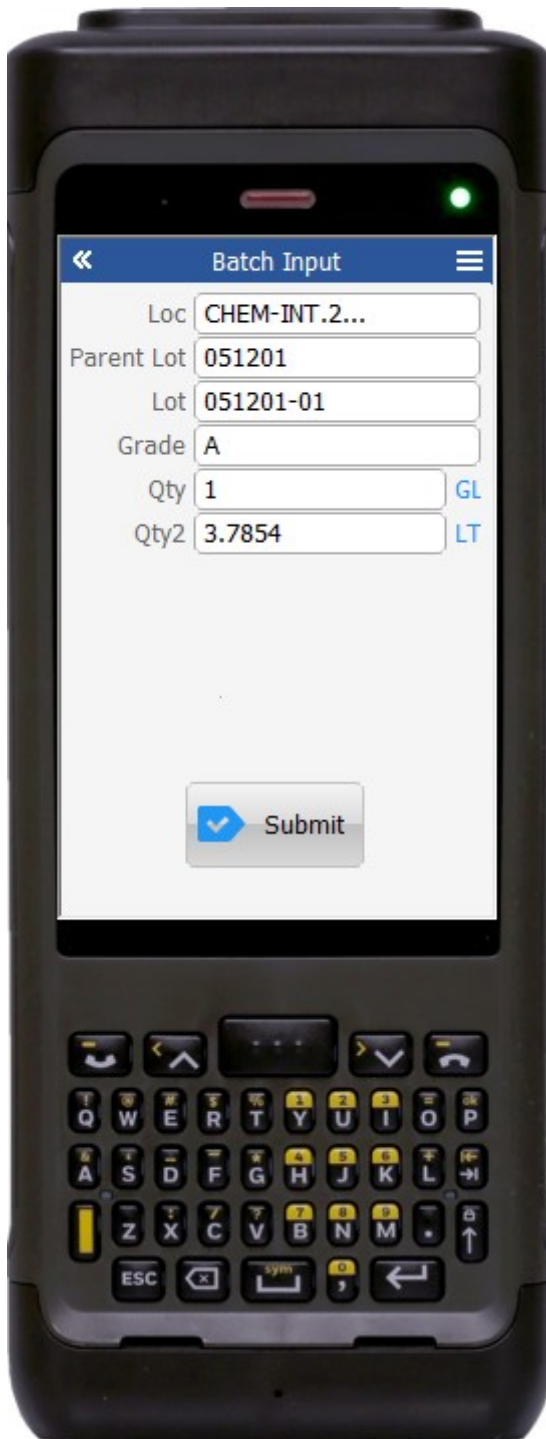
The primary and secondary UOM are displayed based on the selected item.

Finally, the user taps the Submit button.

The **Submit** button sends the ingredient for the selected batch.

Once the transaction is successful, user receives a success message.

The arrow in the upper left corner resets page 2 and takes the user to page 1.



Technical Information

The following describes the tables used for validation, search lists, or functions for a given prompt in this application. If applicable, the default property is also included.

Prompt	Validation / Search – Tables / Functions
Batch	gme_batch_header
Line	gme_material_details; gme_reservations_pvt.get_reserved_qty; mtl_system_items_kfv
Sub Inventory	mtl_secondary_inventories, mtl_item_sub_inventories
Locator	mtl_item_locations_kfv, mtl_secondary_locators
Parent Lot	mtl_lot_numbers
Lot	mtl_lot_numbers
Grade	mtl_system_items_kfv
Qty	inv_convert.inv_um_convert

Customization Considerations

If you are planning on creating a new version of this application or modifying it for a customer, the following questions should be considered before you start.

1. Are the items are revision-enabled?
2. Are the items are child lot/lot-enabled?
3. Are the items are grade-enabled?
4. Are the sub-inventories are locator-enabled?
5. Should the locator be defaulted for the sub-inventory?
6. Is there is only one lot/parent lot associated with the item? Should it be defaulted?

