

DataMAX Software Group, Inc.
El Dorado Hills, CA
USA

Oracle JD Edwards FIXED ASSET DISPOSAL

This application is used to dispose fixed assets (FA).

RFgen Functional Documentation

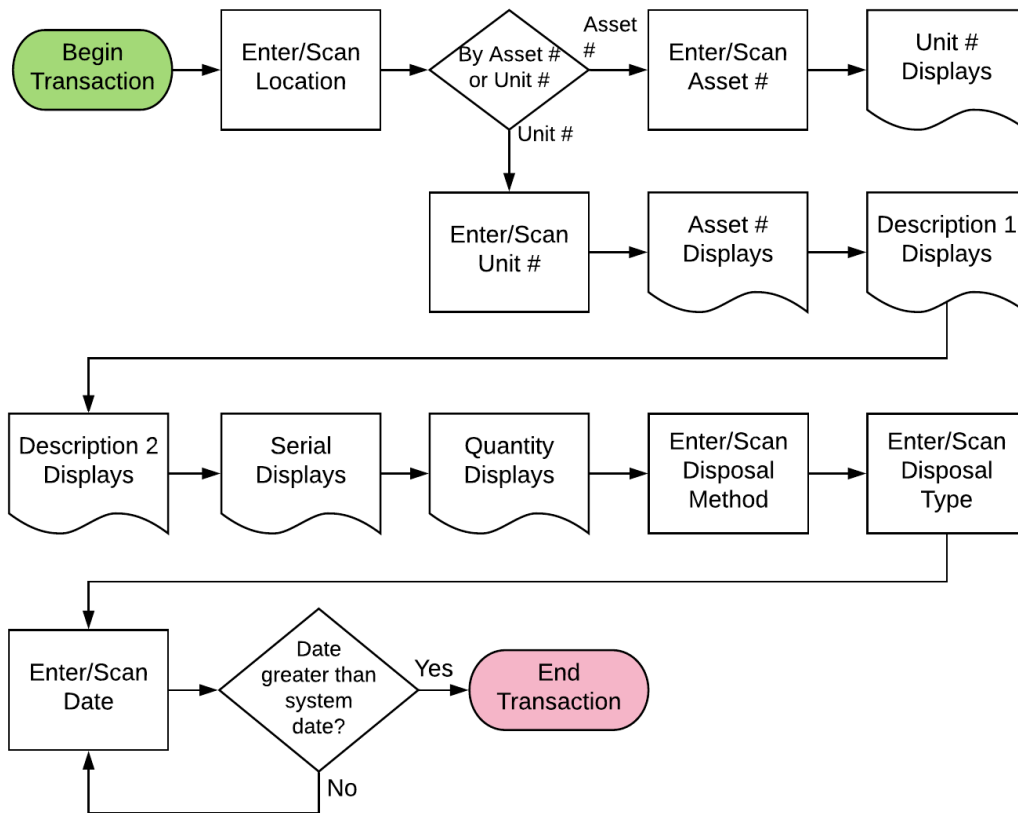
2019

RFgen provides its customers Oracle-validated, ready-to-use suites of Open Source applications and a development environment that can be used to create new apps or to modify existing apps.

This document describes the business workflow and technical information used in this application.

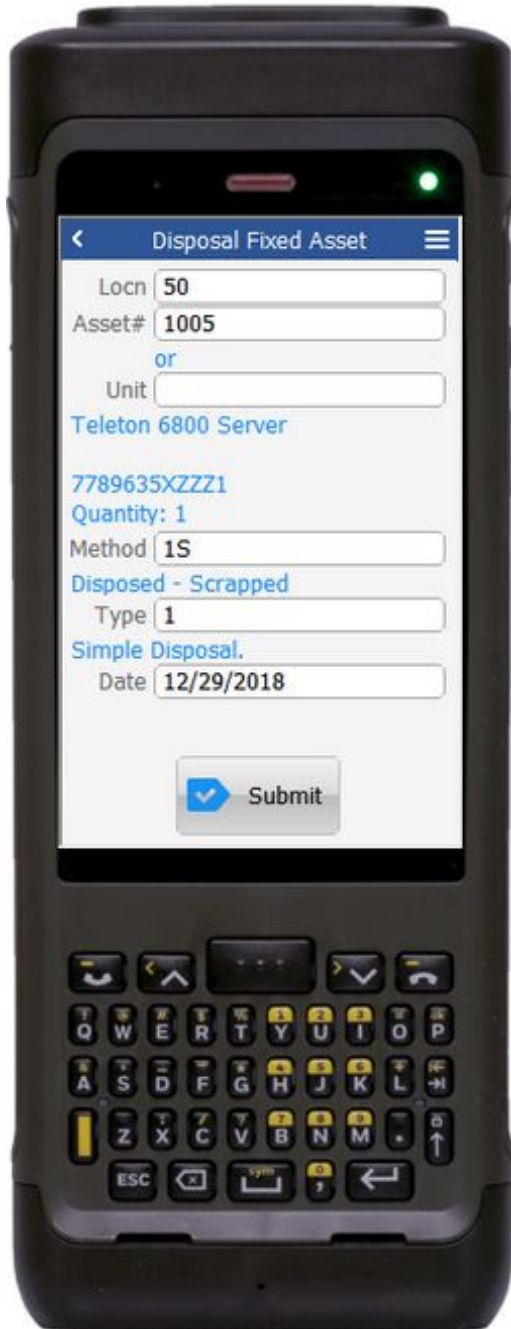


JD Edwards: Fixed Asset (FA) Disposal Workflow



FFACC0100 FA – Fixed Asset Disposal

This application is used to dispose of a fixed asset.
Both the Asset Master table (F1201) and the General Ledger table (F0911) are updated.



Description of Workflow

The user scans, enters or searches the location (Locn).

The user scans, enters or searches either the asset or unit number.

Upon entry of the asset or unit number, the item's description 1, description 2, serial, and quantity display.

The user enters or selects the method of disposal. Only valid JDE disposal methods can be entered or selected.

The user enters or selects the type of disposal. Only valid JDE disposal types can be entered or selected.

If only one value is available, that value will auto-populate.

The user will enter the date of the disposal in the format mm/dd/yyyy. This date must be greater than the current system date.

The **Submit** button sends the transaction to JDE for asset disposal.

The arrow in the upper left corner takes the user back to the menu.



Technical Information

The following describes the tables used for validation, search lists, or functions for a given prompt in this application. If applicable, the default property is also included.

Prompt	Validation / Search – Tables / Functions
Locn (location)	F1201
Asset#	F1201
Unit	F1201
Method	UDC 12 ES
Type	UDC 12 DP
Date	Mm/dd/yyyy format – must be > current date

Customization Considerations

If you are planning on creating a new version of this application or modifying it for a customer, consider asking these questions to help prepare your list of customization requirements.

1. Has JDE been setup for proper asset disposal?

