

Oracle JD Edwards-- WORK ORDER INQUIRY BY WORK ORDER

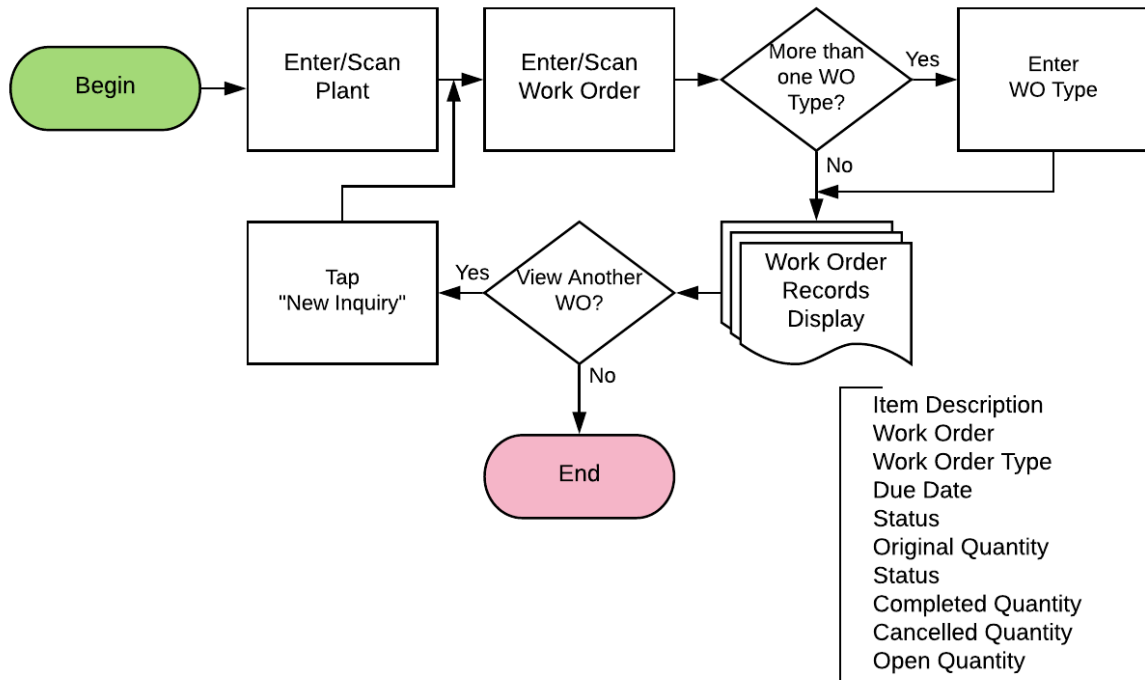
A work order (WO) is a request to manufacture a given quantity of a specific item composed of many parts. This application performs an inquiry on a WO and displays the records from the Work Order Master table and Work Order Parts List table.

RFgen Functional Documentation
2019

RFgen provides its customers Oracle-validated, ready-to-use suites of Open Source applications and a development environment that can be used to create new apps or to modify existing apps.

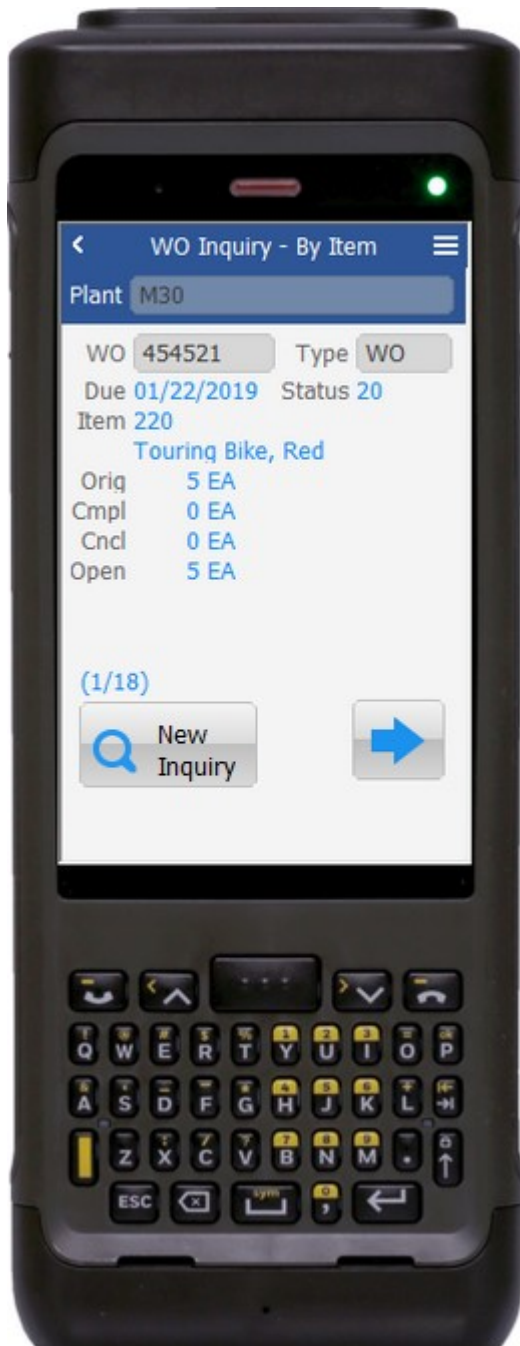
This document describes the business workflow and technical information used in this application.

JD Edwards: Work Order (WO) - Inquiry by Work Order Workflow



FWOQI0100 WO – Inquiry by Work Order

This application performs an inquiry on a WO and displays the records from the Work Order Master table and Work Order Parts List table for the specified WO.



Description of Workflow

First the user scans, enters, or searches for a plant if one does not default from the user profile.

The user enters the WO order number.

If there is only one WO type (e.g. "WO") for the specified WO number, the application displays the type in the Type field.

If there are multiple types, the user enters, scans or searches the Type.

Thereafter, the application displays the attributes of the work order item -- the item to be manufactured, not the parts that make up the manufactured item. The list includes the Due Date (Due), Status (Stat), Item number, Item Description, Original Quantity (Orig), Completion Quantity (Cmpl), Cancelled Quantity (Cncl) and Open Quantity (Open).

The user taps the left or right buttons to view the parts that make up the item.

The **New Inquiry** button clears the form and prompts the user to the WO field.



Technical Information

The following describes the tables used for validation, search lists, or functions for a given prompt in this application. If applicable, the default property is also included.

Prompt	Validation / Search – Tables / Functions	Default Property / in-code defaults
Plant	oWO.validate.BranchPlant oWO.Search.BranchPlant	oGlobal.GetDefaultMCU()
WO	Checks if WO is in F4801 (i.e. WADOCO=Rsp and WAMCU=txtMCU.Text). Also retrieves WADCTO. Form.Validate_WorkOrder oWO.Search.F4801_DOCO	NA
Type	Form.Validate_WorkOrder WO.Search.F4801_DCTO	Set by Form.Validate_WorkOrder

