

Oracle JD Edwards WORK ORDER TIME ENTRY

This application records the time spent on a specific work order, the employee who performed the task, the operational step taken, and the shift and hour type utilized.

This process will update the JDE work order data.

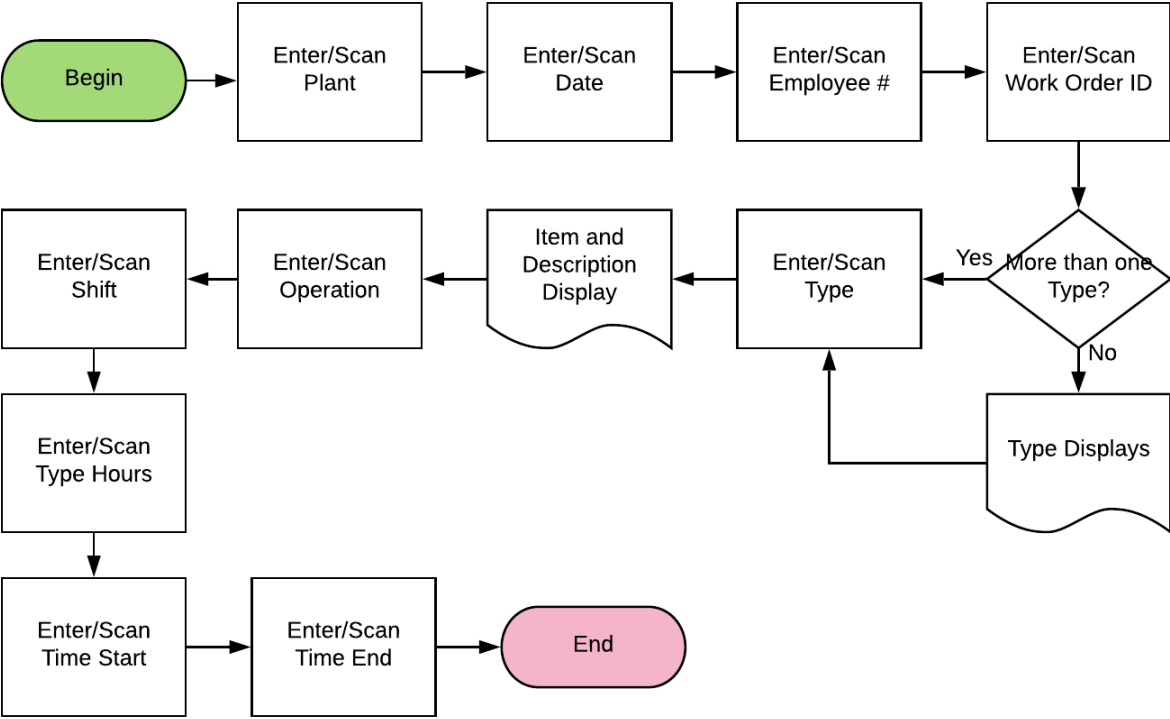
RFgen Functional Documentation

2019

RFgen provides its customers Oracle-validated, ready-to-use suites of Open Source applications and a development environment that can be used to create new apps or to modify existing apps.

This document describes the business workflow and technical information used in this application.

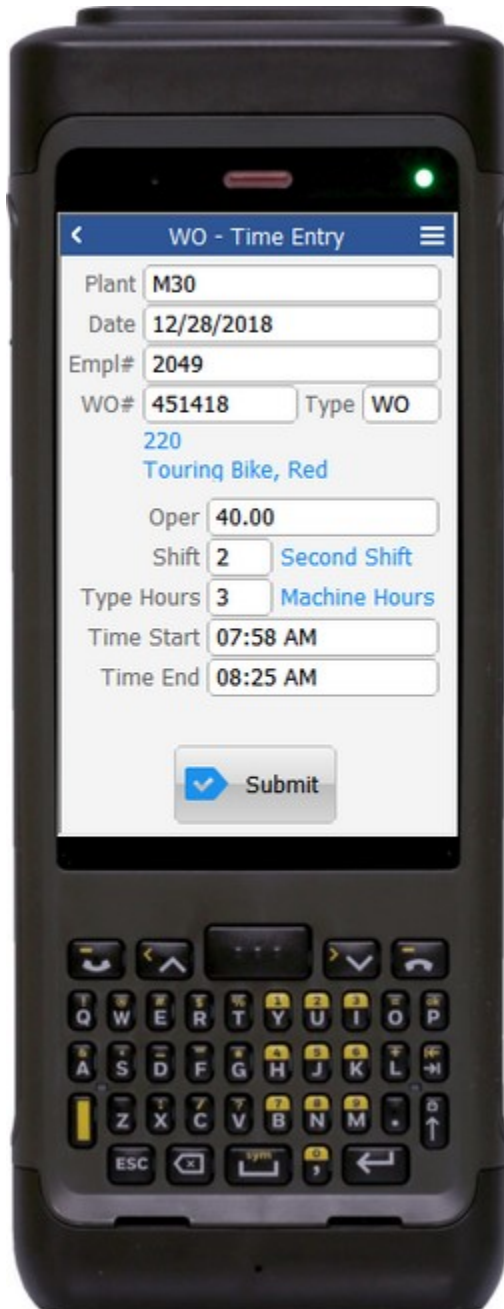
JD Edwards: Work Order (WO) – Time Entry Workflow



FWOTE0100 WO – Time Entry

This application records the time spent on a specific work order, the employee who performed the task, the operational step taken, and the shift and hour type utilized.

The process updates the JDE work order data.



Description of Workflow

First the user scans, enters, or searches for a plant if one does not default from the user profile.

The Date defaults to today's date. Either value may be changed by the user if required.

The user enters or scans the employee number (Empl#). Only valid employee JDE AN8 values are allowed.

The user enters or scans the WO number/identification (WO #).

The WO Type value will default if there is only one workorder with that number available. Otherwise, the user enters or scans the WO type.

The user enters the operation (Oper), shift (Shift), type of hours (Type Hours) and start time (Time Start) or end time (Time End). In general, the format is hh:mm am/pm. The user can also tap the search icon to search and select a time.

The **Submit** button sends the transaction in JDE and resets the form.

The arrow in the upper left corner returns the user to the menu.



Technical Information

The following describes the tables used for validation, search lists, or functions for a given prompt in this application. If applicable, the default property is also included.

Prompt	Validation / Search – Tables / Functions	Default Property / in-code defaults
Plant	F41001	User Profile
Date	m/d/yyyy (currently date will default)	
Empl# (employee #)	F0101	
WO# (workorder #)	F4801	
Type	F4801	
Oper (operation)	F3112	
Shift	UDC 07 SH (A9.2) or UDC 06 SH for all other JDE versions	
Type Hours	UDC 31 TY	
Time Start	hh:mm am/pm	
Time Send	hh:mm am/pm	

Customization Considerations

If you are planning on creating a new version of this application or modifying it for a customer, consider asking these questions to help prepare your list of customization requirements.

1. Is the following setup correctly in JDE?
 - Employee Number / Labor Rate?
 - Item / Rate?
 - Shift Information?
2. Should the Plant ID default differently for Work Orders (for the user)?

