

# Oracle JD Edwards ADVANCED WAREHOUSING - PUT AWAY BY PURCHASE ORDER

This application enables you to confirm an Advance Warehousing (WH) - generated suggestion to put away an item by purchase order (PO). During execution, the suggestion is confirmed in JDE.

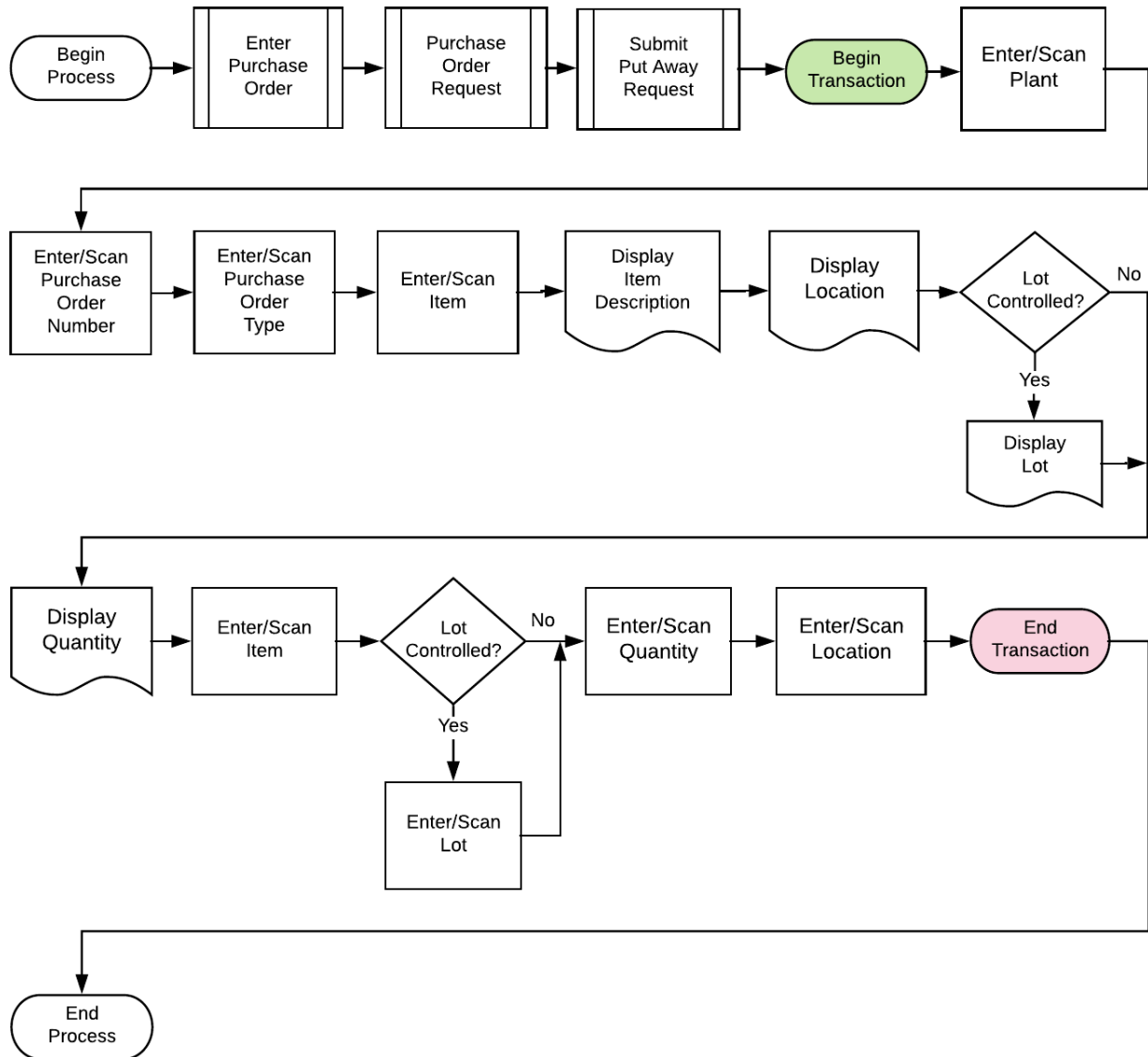
---

RFgen Functional Documentation  
2019

RFgen provides its customers Oracle-validated, ready-to-use suites of Open Source applications and a development environment that can be used to create new apps or to modify existing apps.

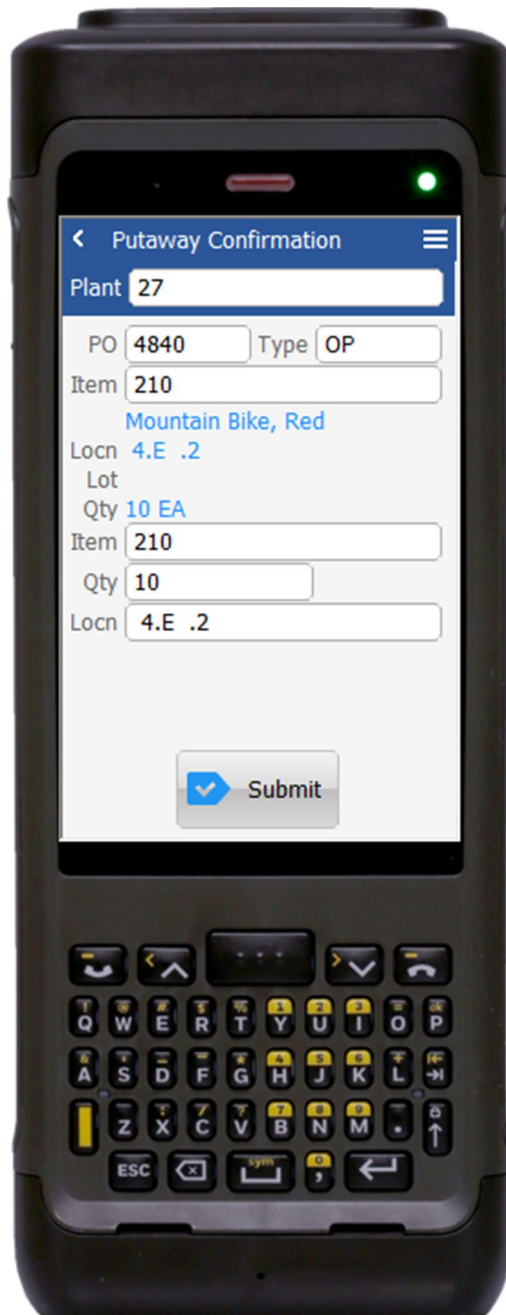
This document describes the business workflow and technical information used in this application.

## JD Edwards: Advanced Warehouse (WH) - Put Away By PO Workflow



## FWHPO0100 WH – Put Away By PO

This application is meant to confirm a put away suggestion that was previously generated by Advanced Warehousing. During execution, the suggestion is confirmed in JDE.



### Description of Workflow

First the user will scan, enter, or search for a plant if one does not default from the user profile.

Next the user will scan, enter, or search and select the purchase order (**PO**) number.

The item description, item description, destination location (**Locn**), **Lot** (if there is one), and quantity (**Qty**) display.

The user confirms the item by scanning it again.

The user confirms the quantity being put away, then scans the destination location.

Finally, the user clicks the **Submit** button to send this transaction to JDE at which time the form will reset by clearing all fields.

The arrow in the upper left corner, when tapped, will take the user back to the menu.

**Note** the RFgen application presented in this document is based on JDE Interactive Application version ZJDE0001. Your display of the same application may look different due to the JDE version and settings in your environment.



## Technical Information

The following describes the prompts and default tables used in this application.

Prompt	Table	Description
Plant	oWD.validate.BranchPlant	App.UserProperty("Plant")
PO	F4611	
Type	F4611	Defaults from txtDOCO_OnEnter()
Item	oWD.validate.Item	
Qty	Cannot exceed the suggestion quantity.	
Locn	oWD.validate.Locn	

## Customization Considerations

If you are planning on creating a new version of this application or modifying it for a customer, consider asking these questions to help prepare your list of customization requirements.

1. Should the Plant be defaulted from the RFgen user profile?
2. What is the Advanced Warehousing status flow for put aways.?

