

SAP

SALES ORDER – PICK CONFIRM

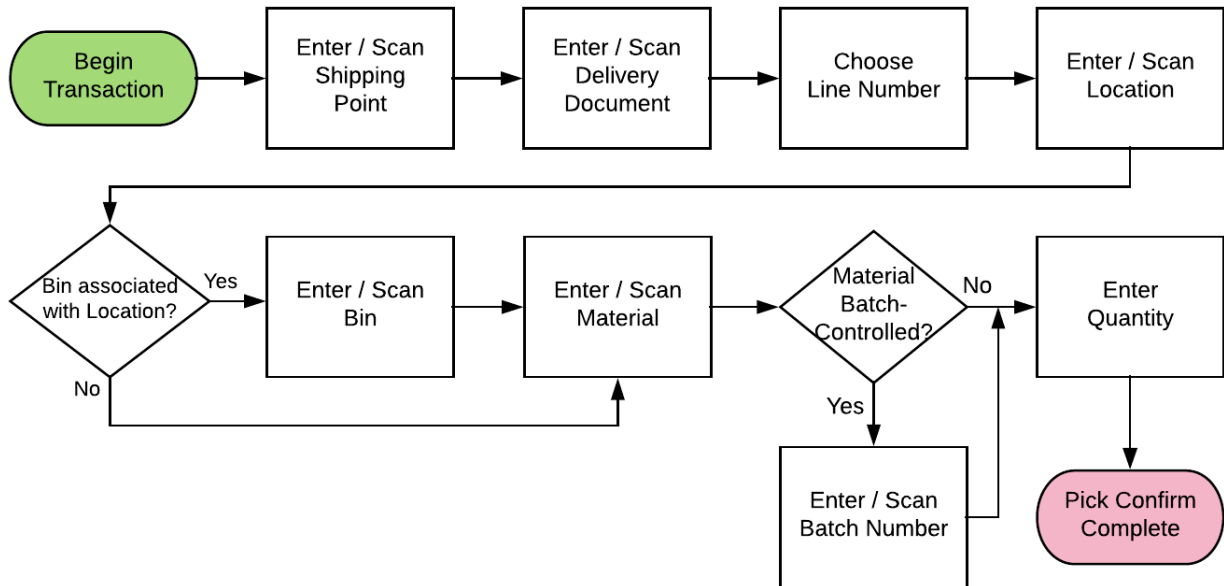
This application performs a pick confirmation against one line of a delivery document.

RFgen Functional Documentation
2019

RFgen provides its customers SAP-validated, ready-to-use suites of “Open Source” applications and a development environment that can be used to create new apps or to modify existing apps.

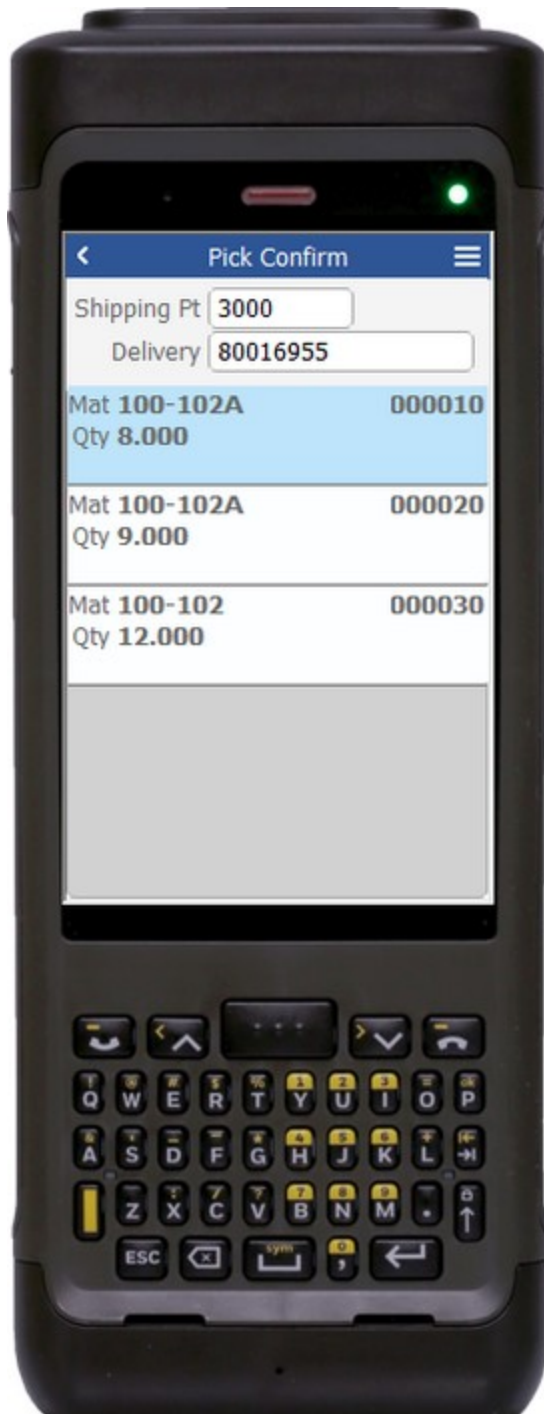
This document describes the business workflow and technical information used in this application.

SAP: SO – Pick Confirm Workflow



FSOPC0200 SO – Pick Confirm

This performs a pick confirmation against one line of a delivery document.



Description of Workflow (1 of 2)

First the user will scan, enter, or search for a shipping point if one does not default from the User Profile.

The user will then scan, enter, or search for a Delivery document.

A list of open lines will display with the line number, material, and the original line quantity to be picked.

The user selects one of the lines and is taken to page 2.

The arrow in the upper left corner will take the user back to the menu.



Description of Workflow (2 of 2)

The delivery entered, the line selected, and the details of the line (location, material, material description, possible batch number, and remaining quantity to pick) are displayed.

The user will scan or enter a location to pick the material from. The value must be the same as the label above, proving that the user is picking the material from the correct location.

If a Bin is associated with the location on the delivery document, the user scans or enters it next. It must be the same as the label above, proving that the user is picking the material from the correct bin.

The user then scans or enters a material. It must be the same as the label above, proving that the user is picking the correct material.

If the material is Batch-controlled, the Batch field will be visible.

The user scans, enters, or searches for a batch number that is assigned to the material specified.

The user enters the quantity they wish to pick. Picking short is allowed.

The user taps the **Submit** button to post the line as picked. The form will reset back to page 1 for another line selection.

The double arrows in the upper left corner will take the user back to page 1.

Technical Information

This lists the tables used for validations, searches and defaults by prompt.

Prompt	Table	Description
Shipping Pt	TVST	User Property "SHIPPING_POINT"
Delivery	LIKPUK / LIPSUP	NA
Line List	VBFA / LIPSUP / LIPS / T320	NA
Locn	On the Delivery line	NA
Bin	On the Delivery line	NA
Mat	On the Delivery line	NA
Batch	MCHB / LQUA	NA
Qty	MCHB / MARD	NA
App Update	SD_DELIVERY_UPDATE_PICKING_1 / L_TO_CREATE_DN	NA

