

Oracle JD Edwards

SALES ORDER – PICK CONFIRM

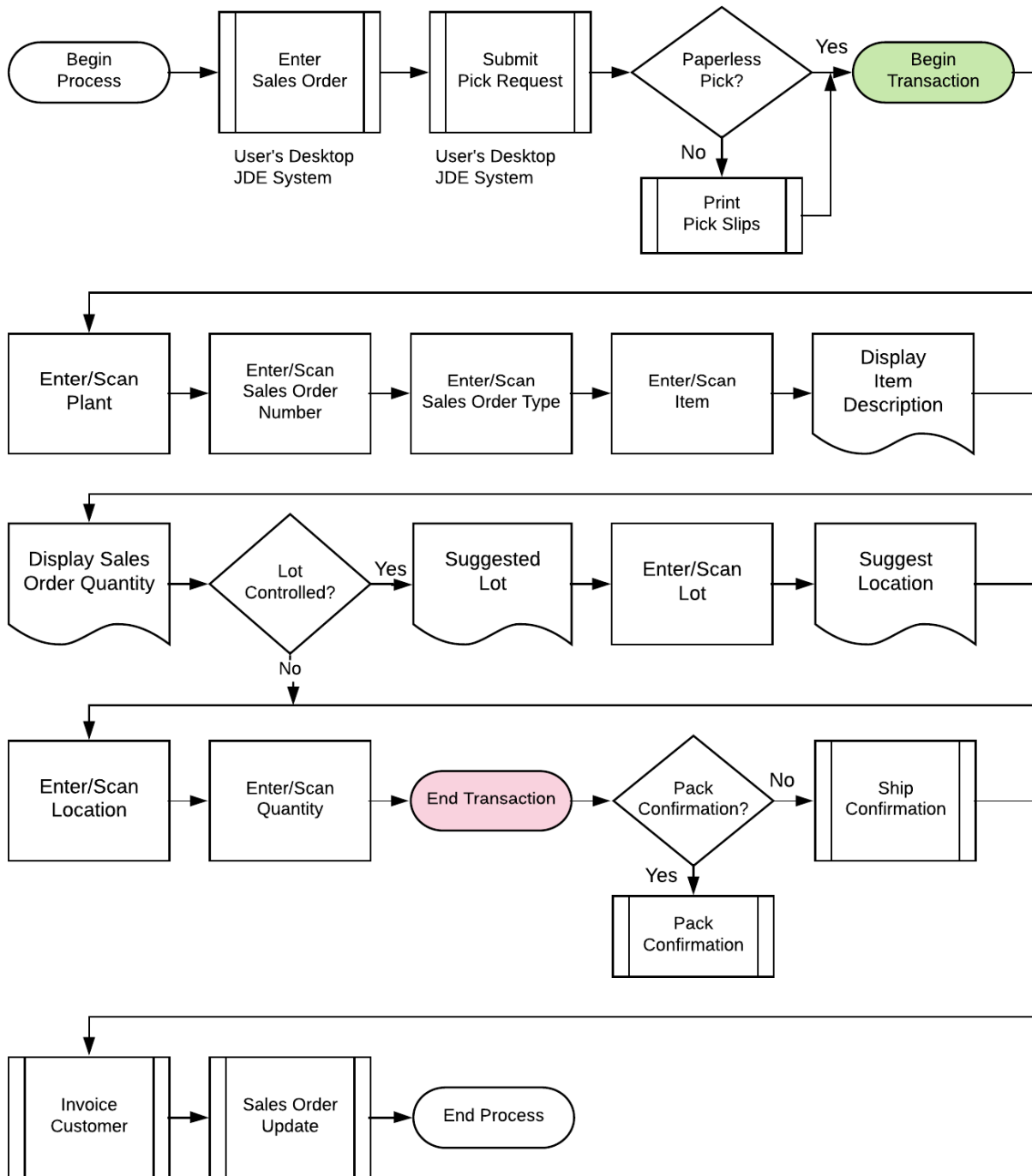
This application is used to Pick Confirm a Sales Order Detail Line with information scanned during the Pick of the item. The location and status of the line are updated in JDE during execution.

RFgen Functional Documentation
2019

RFgen provides its customers Oracle-validated, ready-to-use suites of Open Source applications and a development environment that can be used to create new apps or to modify existing apps.

This document describes the business workflow and technical information used in this application.

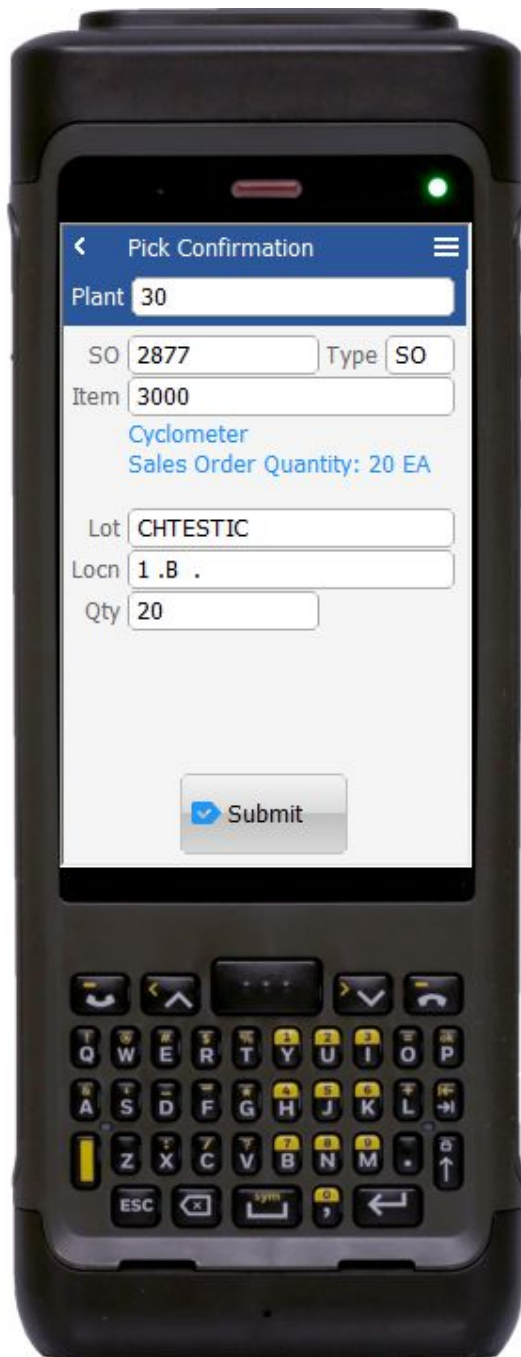
JD Edwards: Sales Order (SO) - Pick Confirm Workflow



FSOPC0100 – SO Pick Confirm

This application is used to Pick Confirm a Sales Order Detail line with information scanned during the Pick of the item. The location and status of the line are updated in JDE during execution. Depending on the processing options and Order Activity Rules, inventory can be hard committed at Pick Confirmation, Pack Confirmation, or Ship Confirmation.





Description of Workflow

First the user scans, enters, or searches for a plant if one does not default from the user profile.

The user scans or enters the Sales Order Number (**SO**). Validation will occur based on the status from the version of P4205 that is being used for the Pick Confirmation.

The user scans the item number. If the item number is not known, the user can select the Search item to show a list of items for that Sales Order. Validation will occur at both the Sales Order Detail and Item Master/Branch tables.

The user will then be presented with the Item Description, Sales Order Quantity and the next prompt information.

If the item is lot-controlled, a Lot prompt will display. The user must scan, enter, or search a lot number.

The user enters or scans the location. The location is validated against the location master and the item/lot/location combination.

The user enters a quantity to pick. Based on the Version being used, the quantity is validated to prevent over shipment, negative location quantities and availability.

Finally, the user clicks the **Submit** button to send this transaction to JDE at which time the form will reset by clearing all fields.

The arrow in the upper left corner, when clicked on, will take the user back to the menu.

Technical Information

The following describes the prompts and default tables used in this application.

Prompt	Table	Description
Plant	oSO.validate.BranchPlant	App.UserProperty("Plant")
SO	F4201/F4211	Status Range of P4205 Version.
Item	oSO.validate.Item	
	F4211	
Lot	F4108	
Locn	oSO.validate.Locn	
	F41021	
Qty	oSO.GetItemQty	

Customization Considerations

If you are planning on creating a new version of this application or modifying it for a customer, consider asking these questions to help prepare your list of customization requirements.

1. Does the Branch default from the RFgen userid?
2. What EnterpriseOne version of P4205 do you use?
3. When is inventory hard committed?
4. Is lot control or serialization being used?
5. Do you allow picking of items whose lots are on "On Hold" status?
6. If yes, do you use lot status group (alias : LOTGRP) or are there any scenarios or lot statuses where picking is allowed?
7. Do you want to add a freight line(s)?

