

SAP

SALES ORDER – PICK BY DELIVERY

This application allows you to select a delivery document from a list of currently open or old deliveries, select a line from that delivery document, pick the material and then continue to the next line. The application accumulates all picked lines until the user chooses to post the data to SAP.

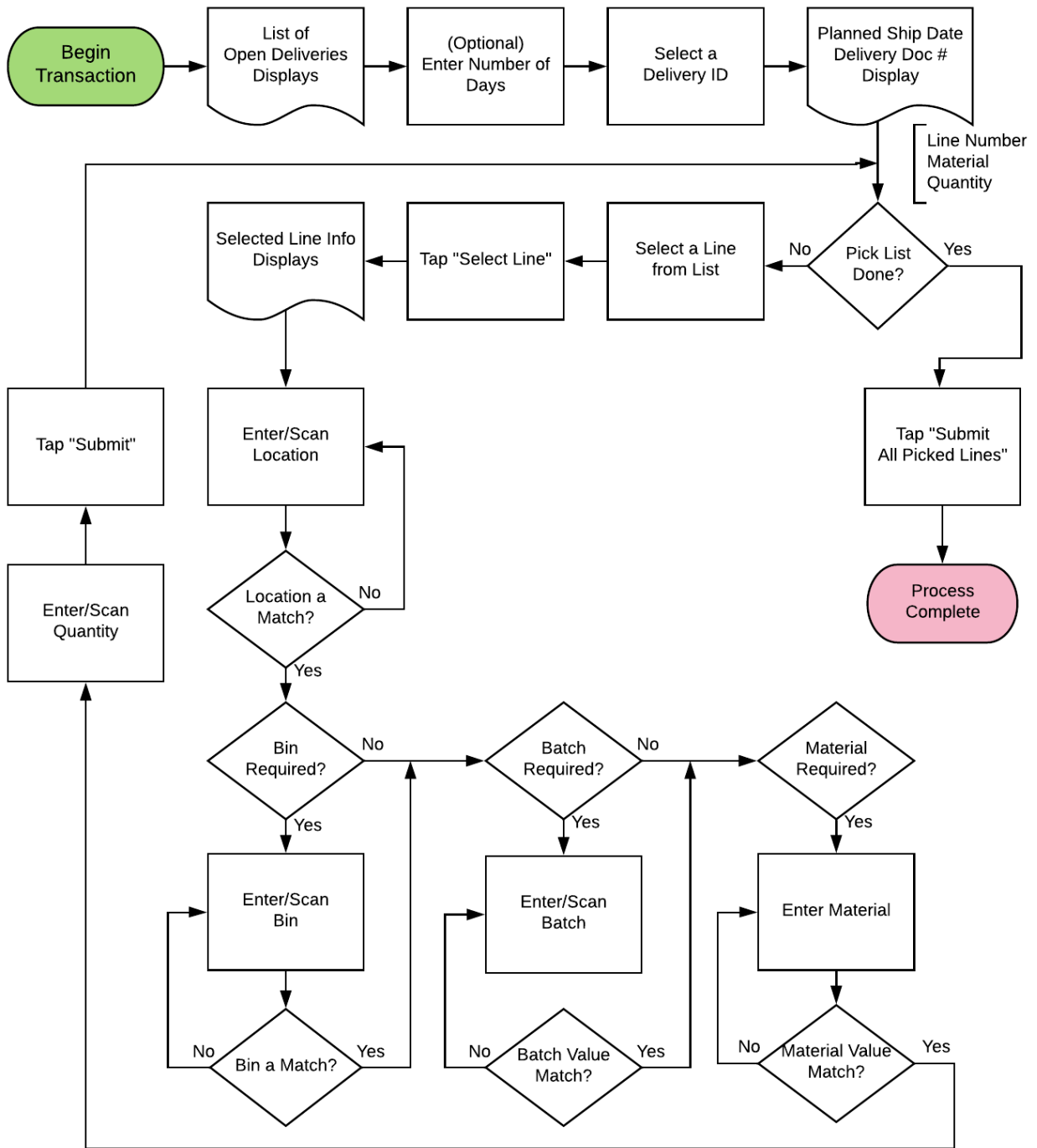
RFgen Functional Documentation

2019

RFgen provides its customers SAP-validated, ready-to-use suites of “Open Source” applications and a development environment that can be used to create new apps or to modify existing apps.

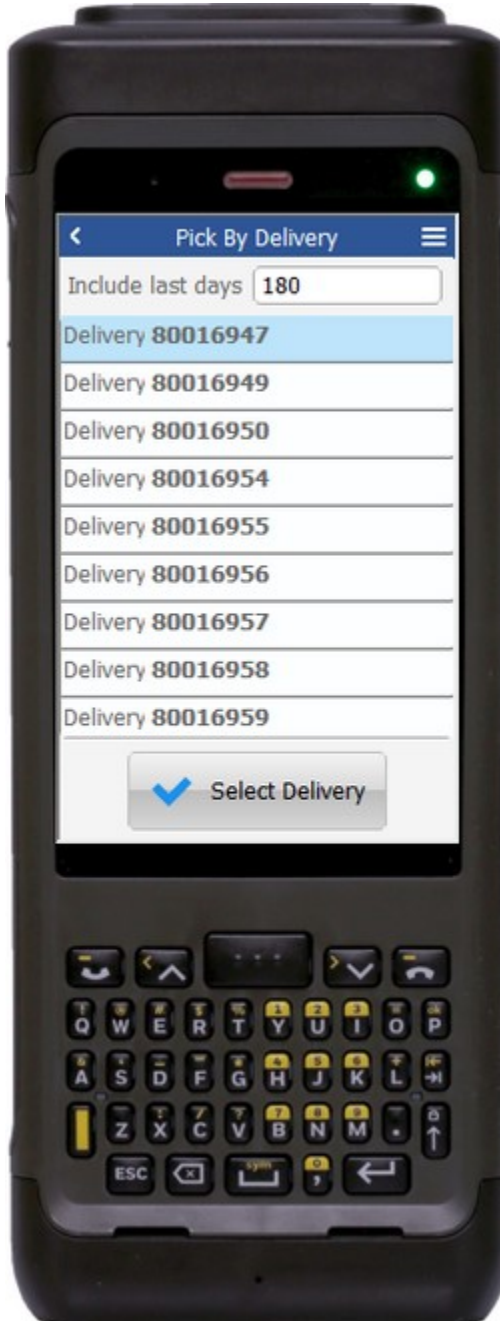
This document describes the business workflow and technical information used in this application.

SAP: Sales Order (SO) – Pick by Delivery



FSOPC0220 SO – Pick by Delivery

This application allows you to select a delivery document from a list of currently open or old deliveries, select a line from that delivery document, then pick the material and then continue to the next line.



The application accumulates all picked lines until the user chooses to post the data to SAP.

Description of Workflow (1 of 3)

First the user will see a list of open deliveries that have been open starting two days ago.

The user can select a delivery or change the number of days to go back so older deliveries can be found.

The user clicks a row or clicks the Select Delivery button to go to page 2.

The arrow in the upper left corner will take the user back to the menu.



Description of Workflow (2 of 3)

The second page shows the selected delivery and the planned shipment date.

A list of the lines on the delivery are shown in a list along with material and quantity to pick.

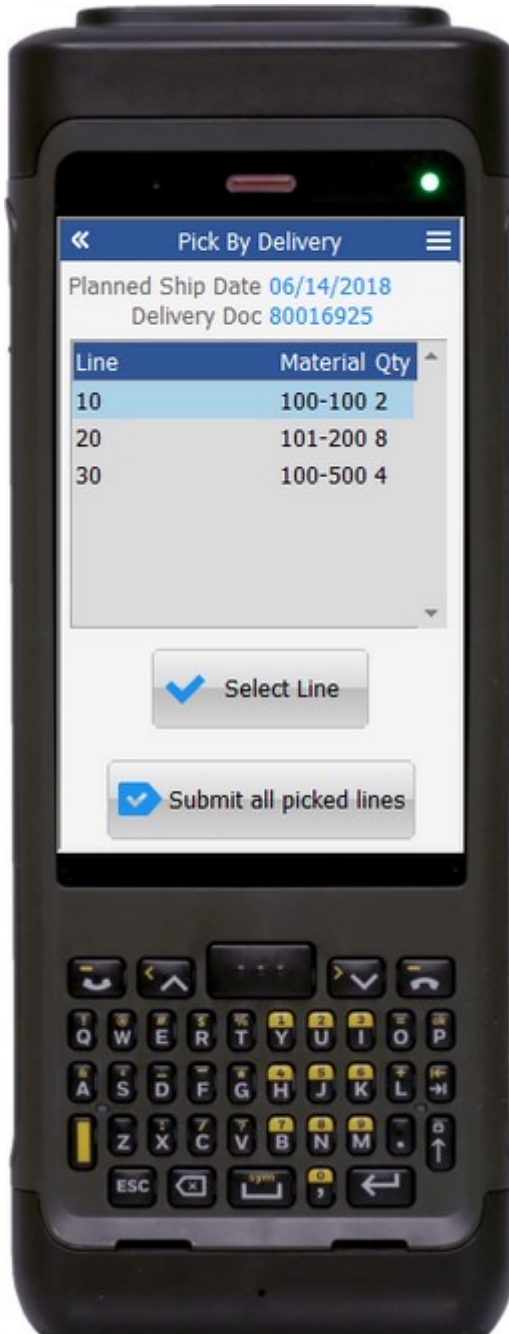
The user selects a line they are going to pick and clicks the **Select Line** button to be taken to page 3.

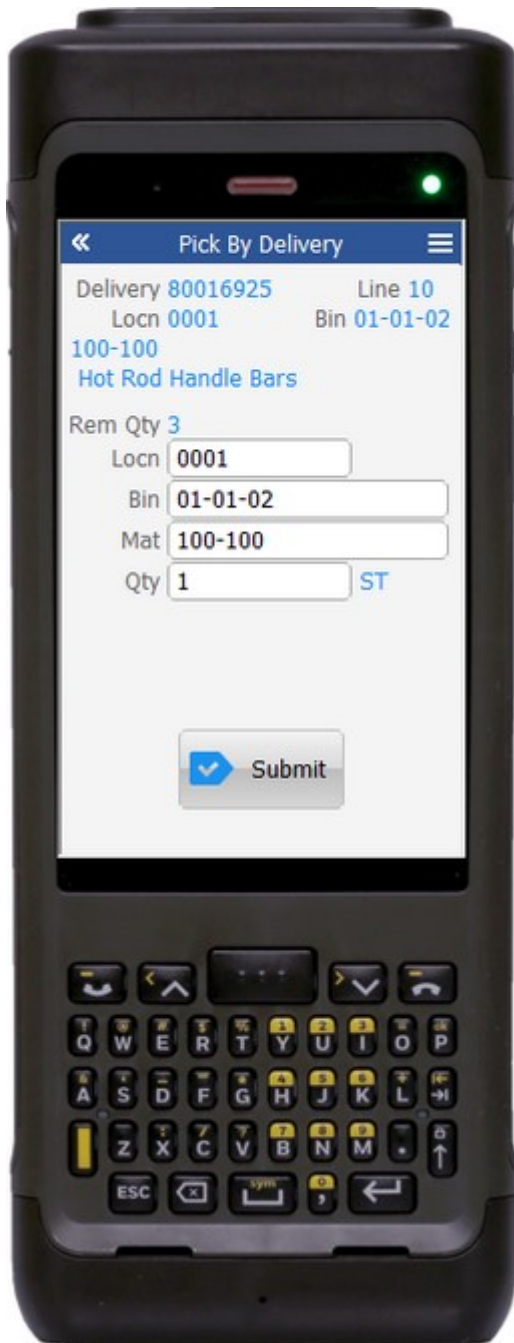
After any one line has been picked on page 3, the user is brought back to page 2 to select another line.

At that time the **Submit all picked lines** button will be displayed.

Tapping the **Submit all picked lines** button will post all picked lines to SAP at one time and reset the application.

The double arrows in the upper left corner will take the user back to page 1.





Description of Workflow (3 of 3)

On page 3, the screen displays the delivery and line selected, location, possible bin, material, material description, possible batch, and remaining quantity to pick.

The user is required to enter the location exactly as it is shown.

The same is true for the bin if it applies, the material, and possible batch.

The user is proving that they are in the right place and taking the right material.

The user enters the quantity they are picking. A short pick is allowed.

The user taps the **Submit** button to accumulate the collected data with all other lines that have been picked and is taken back to page 2.

The double arrows in the upper left corner will take the user back to page 2.

Technical Information

This lists the tables used for validations, searches and defaults by prompt.

Prompt	Table	Description
		User Property "PLANT"
		User Property "WH"
		Code Constant = 2 days to go back for deliveries
IstDelivery	BAPI_DELIVERY_GETLIST	NA
IstLine	BAPI_DELIVERY_GETLIST / VBFA / T320	NA
Locn	On Delivery Line	NA
Bin	On Delivery Line	NA
Mat	MARA / MARC / MARD / MCHB / MSPR / MSKA / LQUA	NA
Batch	MCHB / LQUA / MARD / MSPR / MSKA	NA
Qty		NA
App Update	SD_DELIVERY_UPDATE_PICKING_1 / L_TO_CREATE_DN	NA

