

SAP

SALES ORDER – PACK DELIVERY

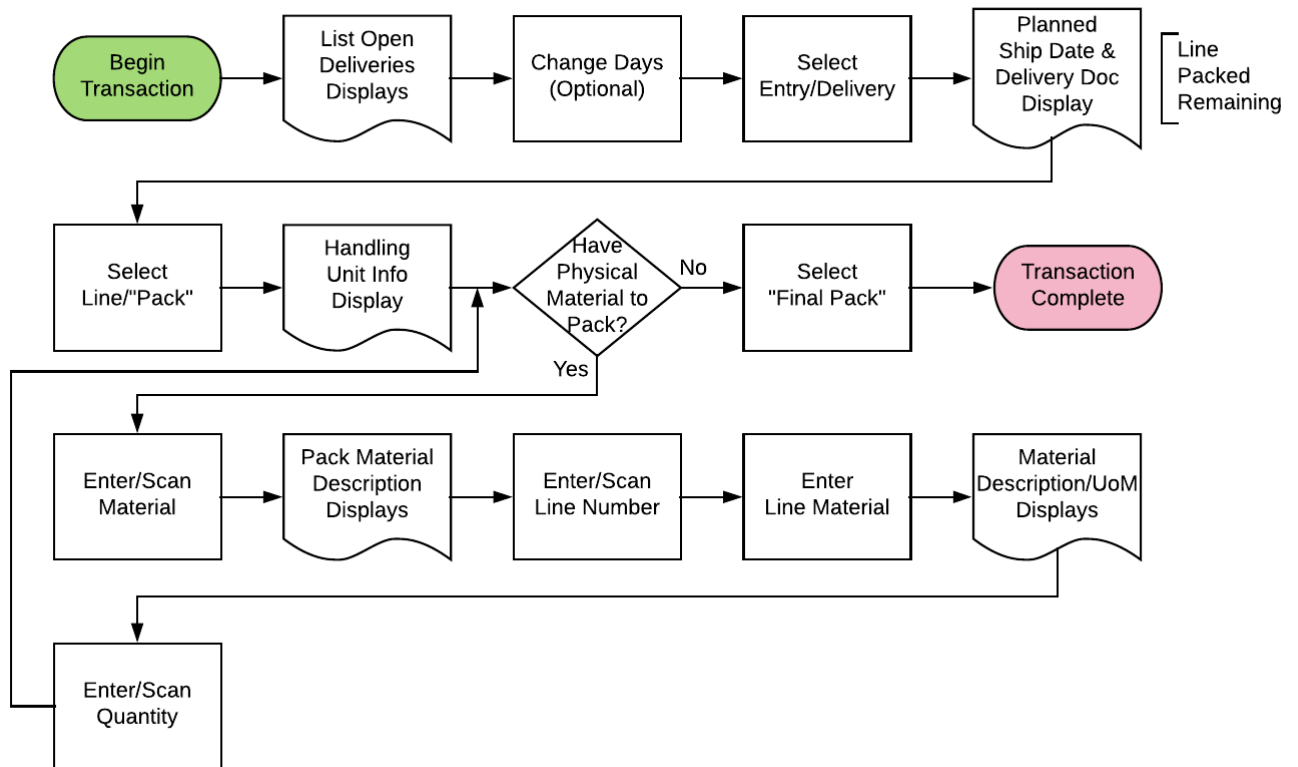
This application helps prepare a sales order for delivery using handling units. To increase efficiency, you can mass-create multiple handling units based on the quantity being packed. The application also allows users to unpack an item and review what has been packed.

RFgen Functional Documentation
2019

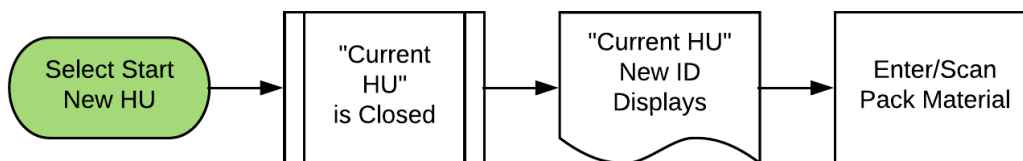
RFgen provides its customers SAP-validated, ready-to-use suites of “Open Source” applications and a development environment that can be used to create new apps or to modify existing apps.

This document describes the business workflow and technical information used in this application.

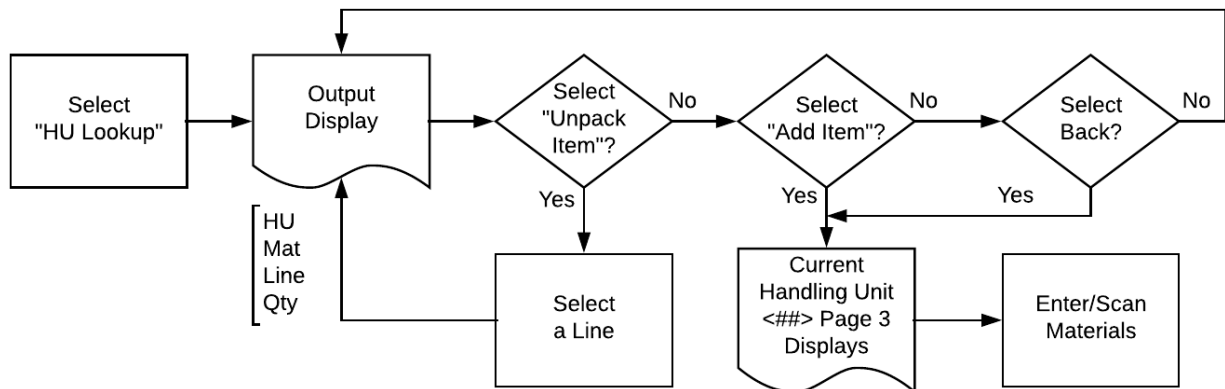
SAP: SO – Pack Delivery (1 of 4)



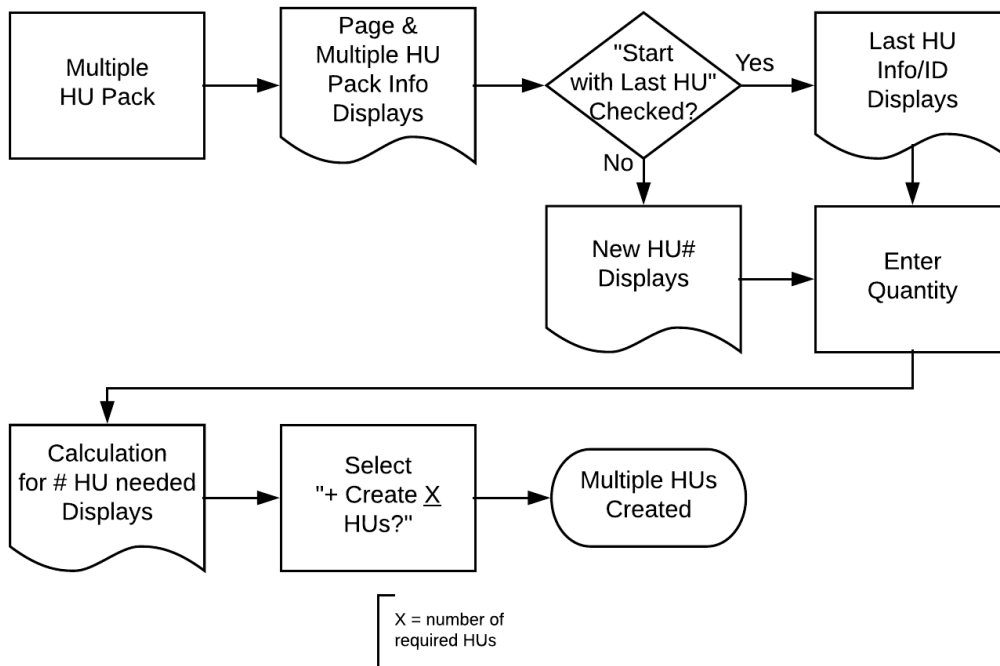
Sales Order (SO) – Pack Delivery (2 of 4)



Sales Order (SO) – Pack Delivery (3 of 4)

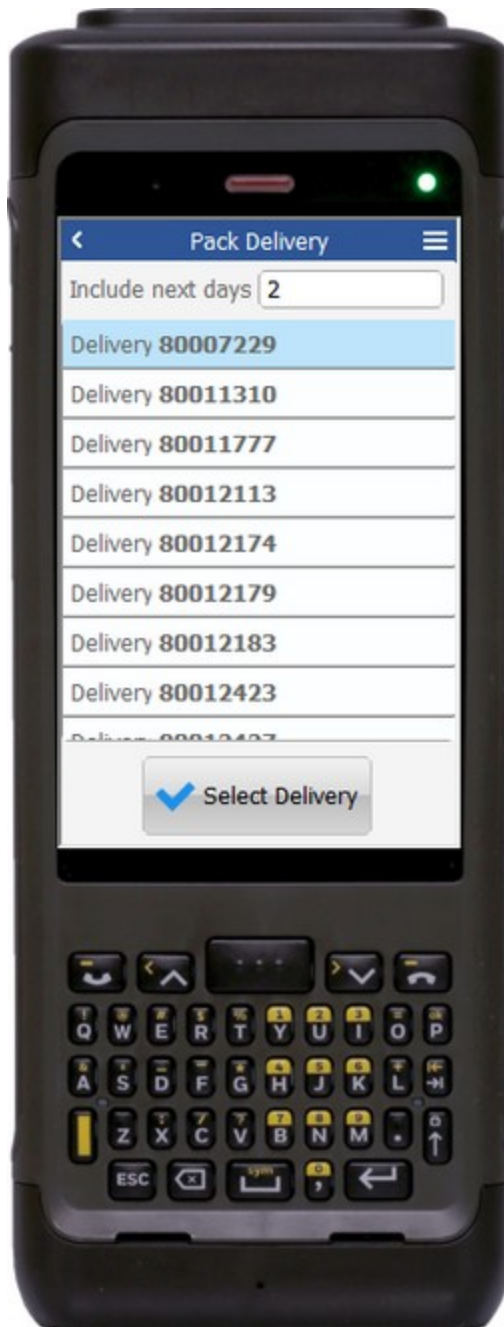


Sales Order (SO) – Pack Delivery (4 of 4)



FSOPA0220 SO – Pack Delivery

This application tracks and organizes the packing of one or more items into one or more Handling Units for delivery. You can mass create multiple handling units based on the quantity being packed, unpack an item, and review what's been packed.



Description of Workflow (1 of 5)

First the user will see a list of open deliveries that go back three days and look forward two days by default.

The user can change the number of days forward to look.

Tapping an entry in the list or the **Select Delivery** button will take the user to page 2 where the line details of the delivery will be displayed.

The arrow in the upper left corner will take the user back to the menu.



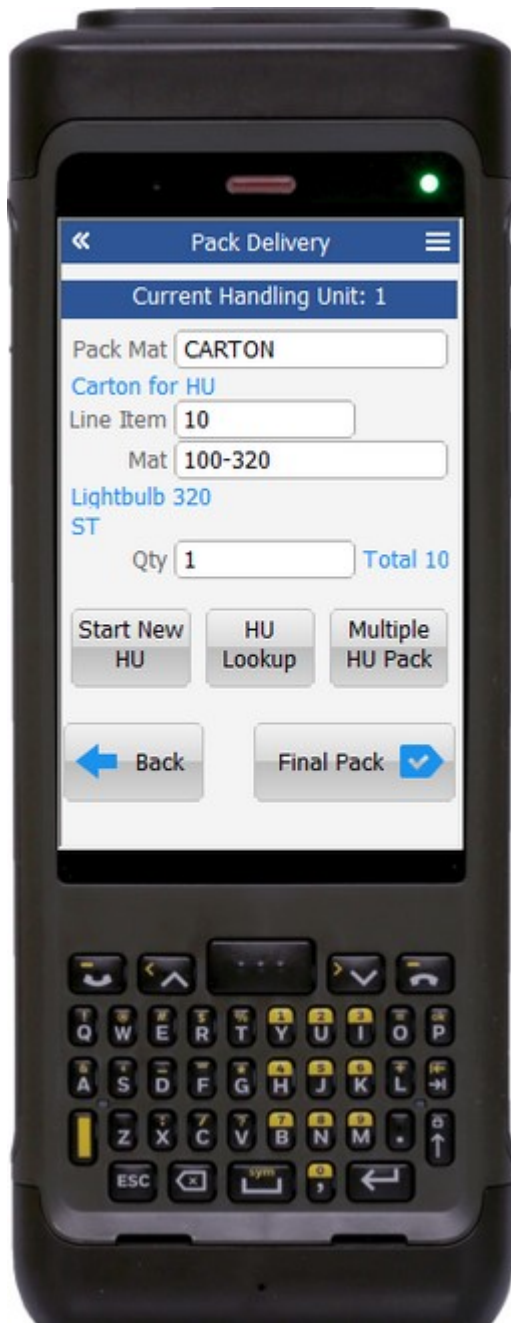
Description of Workflow (2 of 5)

The Planned Ship Date and the Delivery document selected from the first page are displayed along with a panel list of all the lines on the document that are available for packing.

The user either taps on a line or the **Pack** button to be taken to the next page.

The **Back** button takes the user back to page 1 to select a different delivery or exit the application.

The double arrows in the upper left corner will take the user back to page 1.



Description of Workflow (3 of 5)

The user is shown which handling unit is currently being packed in the heading.

The user scans, enters, or searches for a Pack material. The description of the material is displayed.

The user enters the line number to pack.

The user scans or enters the material on that line as a verification the user is packing the correct material.

The description of the material and the unit of measure are displayed for reference.

The user enters the quantity of the material being packed. The total to pack shows on the right of the Quantity field.

Once entered, the screen is reset, and the user starts at the Pack Material field again.

If the user taps the **Start New HU** button, the current handling unit is closed, and the heading updated with the next number.

If the user taps the **HU Lookup** button, they are taken to page 5 where the list of lines packed for the current handling unit are displayed.

If the user taps on the **Multiple HU Pack** button, they are taken to page 4 where they can mass-create handling units based on the quantity of materials they are packing.

If the user clicks on the **Final Pack** button, all handling units are posted to SAP and the user is taken to page 2.

If the user clicks on the **Back** button, they are taken back to page 2 to select a different line.

The double arrows in the upper left corner will take the user back to page 2.





Description of Workflow (4 of 5)

The Multiple HU page is meant to create as many handling units as necessary to accommodate the quantity of the material. For example, if 5 of a material fills one handling unit and there are 50 to pack, the math is performed to determine that 10 handling units would need to be created.

The user has the option of starting the mass-pack with the current handling unit or starting a new one by selecting or unselecting the check box at the top.

The user enters the quantity of the material to be packed.

The **Create HUs** button displays the number of handling units that are required to pack that quantity.

The user taps the **Create HUs** button to create and pack all the materials all at once.

After entering the quantity, the screen resets and the user may enter another large quantity of material.

If the user taps the **Back to Single HU Pack** button, they are taken to page 3 and the heading is updated.



Description of Workflow (5 of 5)

The user reviews the list of lines packed in the current handling unit.

If the user clicks the **UnPack Item** button, the selected line will be removed from the handling unit.

If the user clicks the **Add to HU button**, the user is taken back to page 3 to enter more materials.

If the user clicks the **Back button**, the user is taken back to page 3.

The double arrows in the upper left corner will take the user back to page 3.

Technical Information

This lists the tables used for validations, searches and defaults by prompt.

Prompt	Table	Description
	NA	User Property "PLANT"
Include Days	NA	NA
Delivery List	TVSWZ / LIKPUK	NA
Line List	LIPSUP / LIPS / VEPO	NA
Pack Mat	BAPI_MATERIAL_GET_DETAIL / BAPI_MATERIAL_GETLIST / MARA	NA
Line Item	On the Delivery / BAPI_MATERIAL_GET_DETAIL / BAPI_MATERIAL_GETLIST	NA
Mat	On the Line / BAPI_MATERIAL_GET_DETAIL / BAPI_MATERIAL_GETLIST	NA
Qty		NA
HU List		NA
App Update	BAPI_HU_CREATE / VEKP / BAPI_TRANSACTION_COMMIT / BAPI_HU_CHANGE_HEADER / WS_DELIVERY_UPDATE	NA