

SAP

SALES ORDER – PACK CONFIRMATION

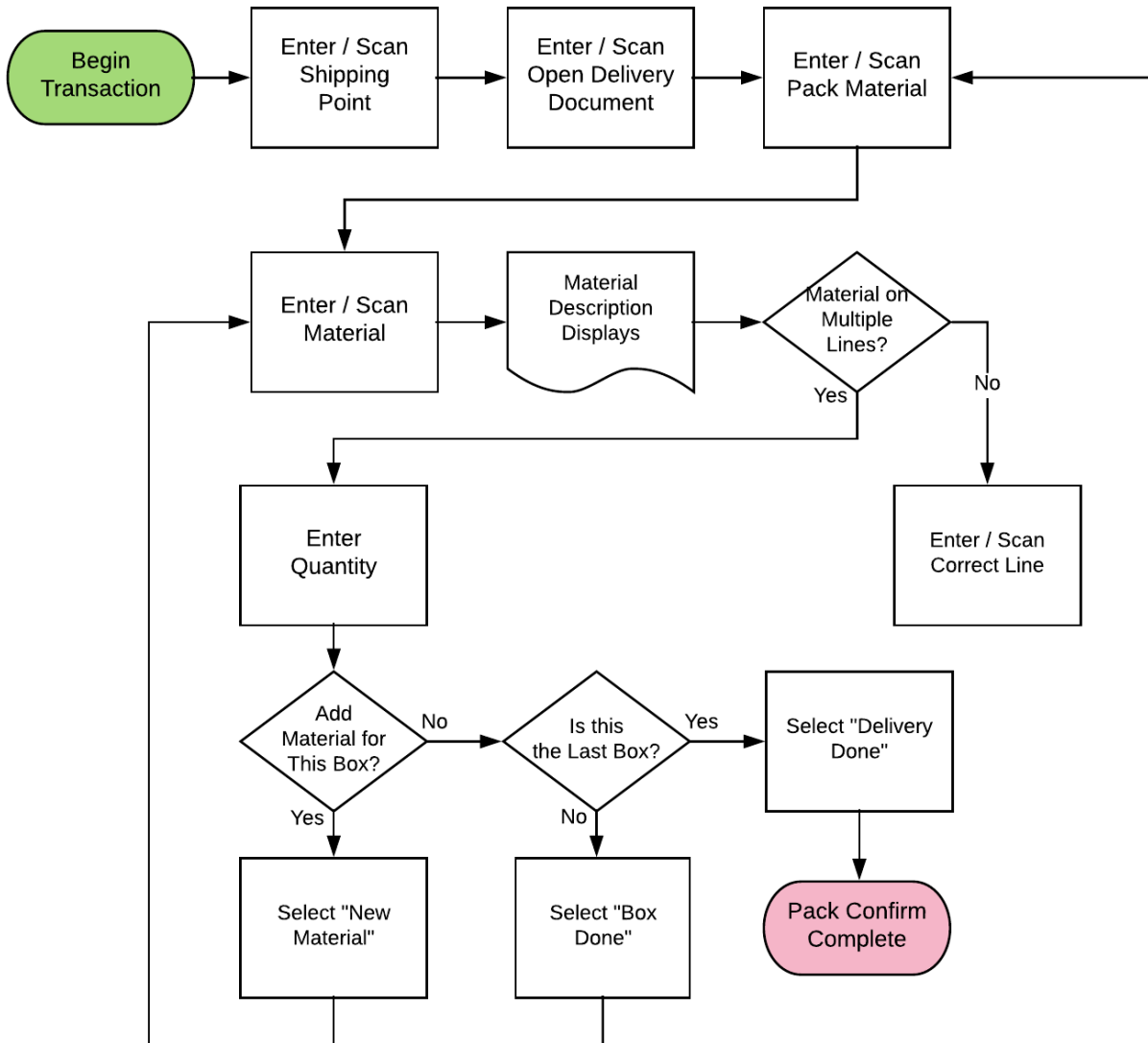
This application is used to confirm that one or more items in a sales order was packed into one or more boxes. After each completed box, the material is posted to SAP. Completing the delivery will post the completion of the last box and reset the application.

RFgen Functional Documentation
2019

RFgen provides its customers SAP-validated, ready-to-use suites of “Open Source” applications and a development environment that can be used to create new apps or to modify existing apps.

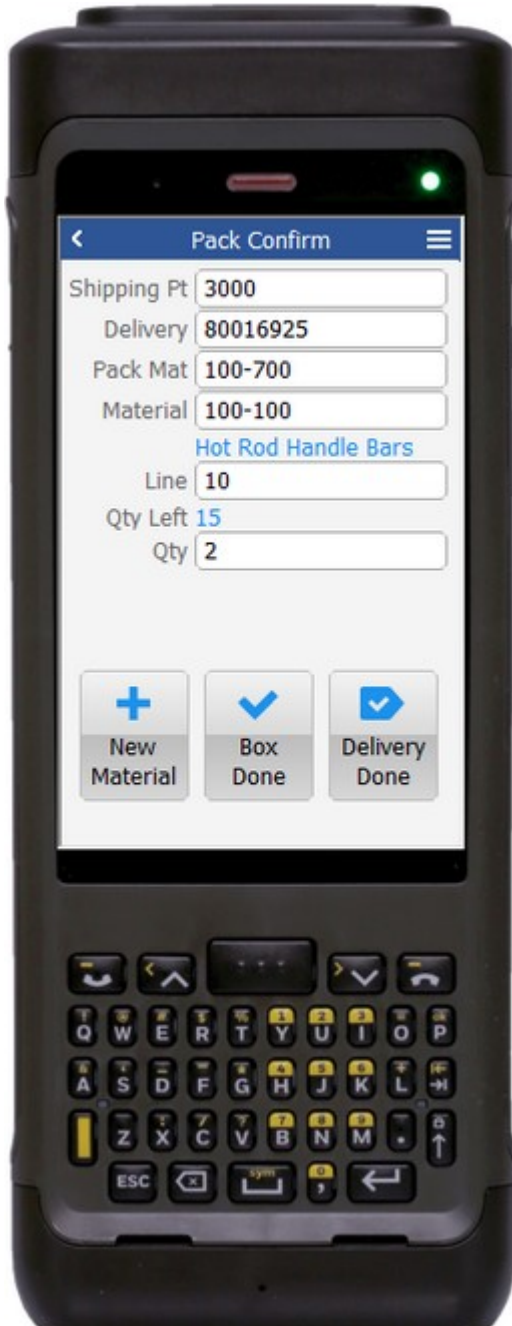
This document describes the business workflow and technical information used in this application.

SAP: Sales Order (SO) – Pack Confirm



FSOPA0200 – Pack Confirm

This application tracks the packing of sales order material before delivery. After a user packs the items and selects **Box Done** the material is posted to SAP. Selecting **Delivery Done** will post the completion of the last box and reset the application.



Description of Workflow

First user will scan, enter, or search for a shipping point if one is not already defaulted.

The user will scan, enter, or search for an open delivery document.

The user scans or enters a pack material.

The user then scans, enters, or searches for a material.

If searched, the list of materials on the delivery will be shown. The material's description will be displayed.

If the material exists on more than one line on the delivery document, the user can scan, enter, or search for the correct line. Otherwise the line value is defaulted and not changeable. The quantity left to pack for that line is displayed.

The user enters the quantity they wish to pack in the current box.

Tapping the **New Material** button will reset the application back to the Material field and accumulate the materials that are being placed in the same box.



Tapping the **Box Done** button will post to SAP all the materials in the current box and reset the application to the Pack Mat field.

Tapping on the **Delivery Done** button will post the last box and reset the application to the Delivery field.

The arrow in the upper left corner will take the user back to the menu.

Technical Information

This lists the tables used for validations, searches and defaults by prompt.

Prompt	Table	Description
Shipping Pt	TVST	User Property "SHIPPING_POINT"
Delivery	LIKPUK	NA
Pack Mat	BAPI_MATERIAL_GET_DETAIL / BAPI_MATERIAL_GETLIST	NA
Material	BAPI_MATERIAL_GET_DETAIL / BAPI_MATERIAL_GETLIST / LIPSUP	NA
Line	LIPSUP / VEPO	NA
Qty		NA
App Update	BAPI_HU_CREATE / VEKP / BAPI_TRANSACTION_COMMIT / BAPI_HU_CHANGE_HEADER / WS_DELIVERY_UPDATE	NA

