

SAP PLANT MAINTENANCE – ISSUE TO MAINTENANCE ORDER (SERIAL)

This application helps you issue material to a maintenance order.

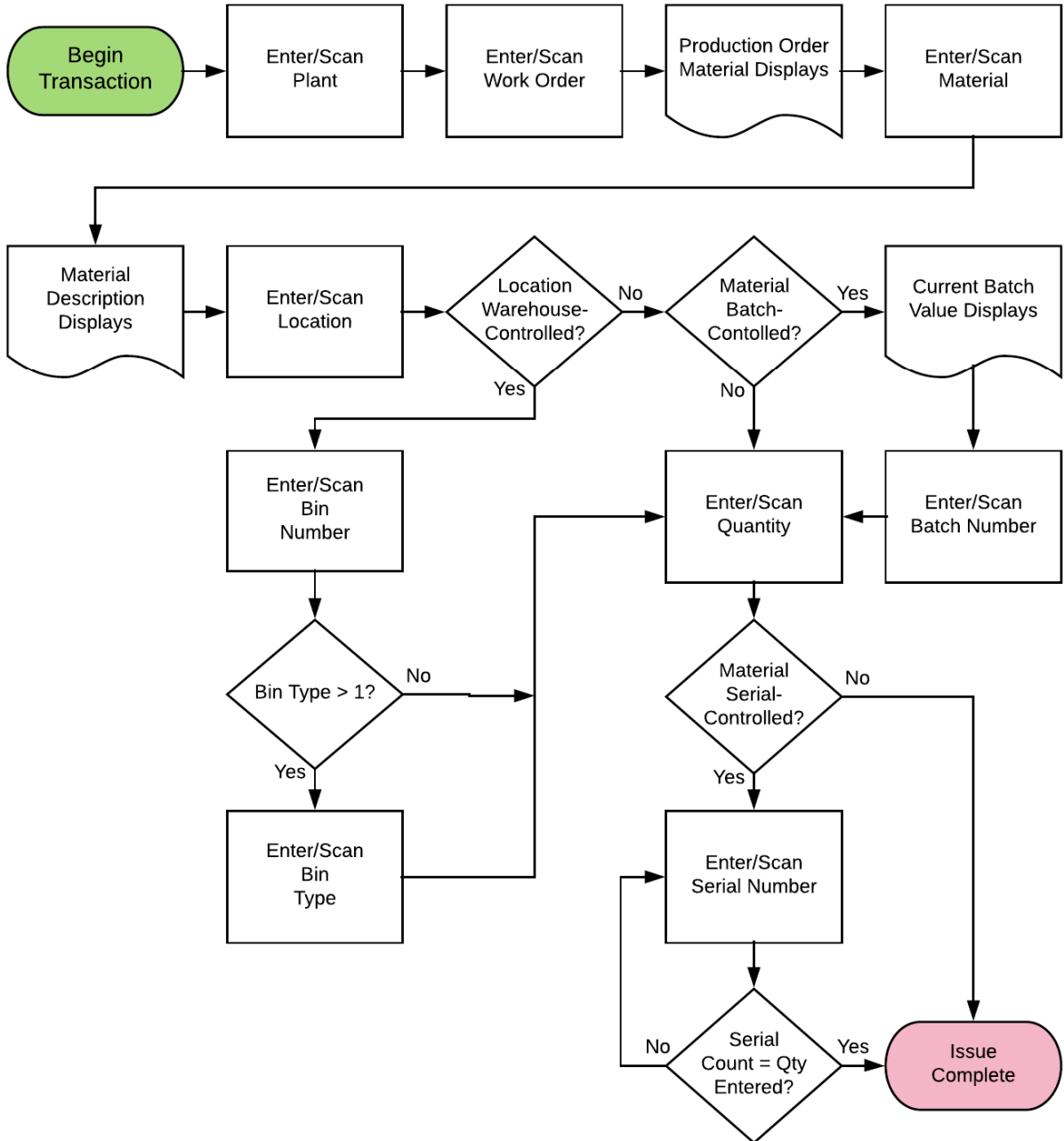
RFgen Functional Documentation

2019

RFgen provides its customers SAP-validated, ready-to-use suites of “Open Source” applications and a development environment that can be used to create new apps or to modify existing apps.

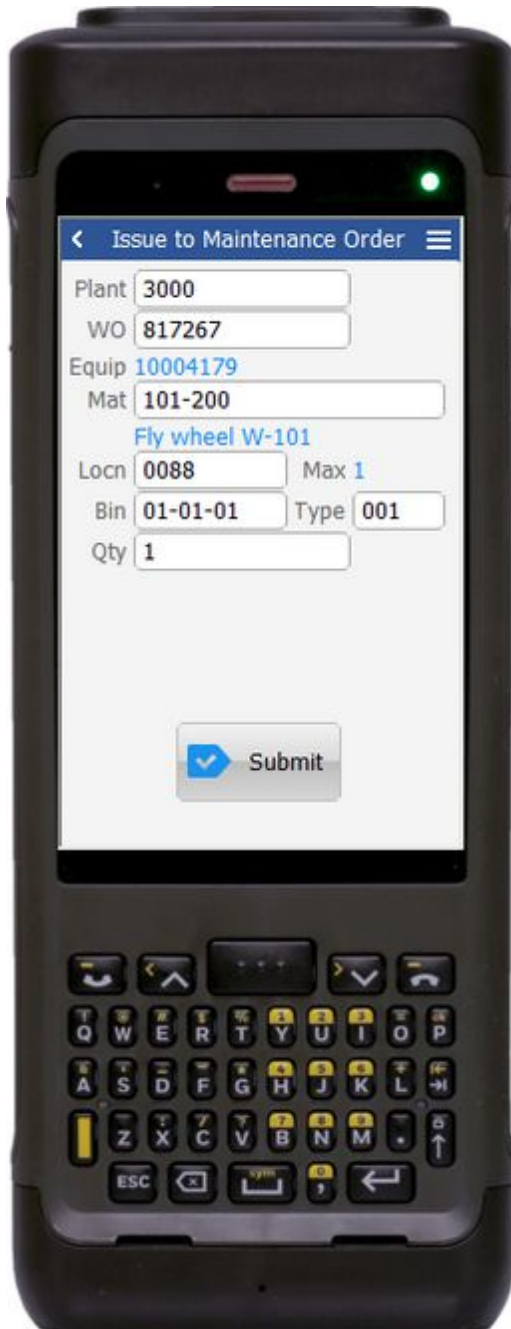
This document describes the business workflow and technical information used in this application

SAP: PM – Issue to Maintenance Order (Serial)



FPMCW0200 PM – Issue to Maintenance Order (Serial)

This application helps you issue material to a maintenance order



Description of Workflow

First the user will scan, enter, or search for a plant value.

The user will scan or enter a work order.

The production order's material will be displayed.

The user then scans, enters, or searches for a material.

Searching for a material will show a list of materials on the reservation for the work order. The material's description will be displayed.

If the material is Batch-controlled, the Batch field will be visible.

If the material is Serial-controlled, the Serial field will be visible.

The user scans, enters, or searches for a location where the material exists.

If the location is a warehouse-controlled location the Bin and Type fields will appear. Based on the material, the batch value from the reservation will be displayed if the material is batch-controlled.

The user scans, enters, or searches for a Bin number that is assigned to the material specified.

If there is more than one Type associated with that bin, the user will be prompted to pick one from a list.



The user scans, enters, or searches for a batch number that is assigned to the material specified.

The user enters the quantity they wish to issue.

If entering serial numbers, the Serial field will continue to have focus until the count of serial number is equal to the quantity entered in the Quantity field.

When the user taps the **Submit** button, the issue is posted to SAP and the application is reset.

The arrow in the upper left corner will take the user back to the menu

Technical Information

This lists the tables used for validations, searches and defaults by prompt.

Prompt	Table
Plant	T001W
WO	BAPI_ALM_ORDER_GET_DETAIL
Mat	BAPI_MATERIAL_GET_DETAIL / BAPI_MATERIAL_GETLIST / MARA / MARC / RESB
Locn	BAPI_MATERIAL_GETLIST / T320 / T001L / T159L / T156
Bin	LAGP / LQUA
Type	LAGP
Batch	MCHB / LQUA
Qty	
Serials	EQUI / JEST
App Update	BAPI_GOODSMVT_CREATE