

SAP

INVENTORY MANAGEMENT – INVENTORY RECLASSIFICATION

This application performs a reclassification of a material, turning one material into another.

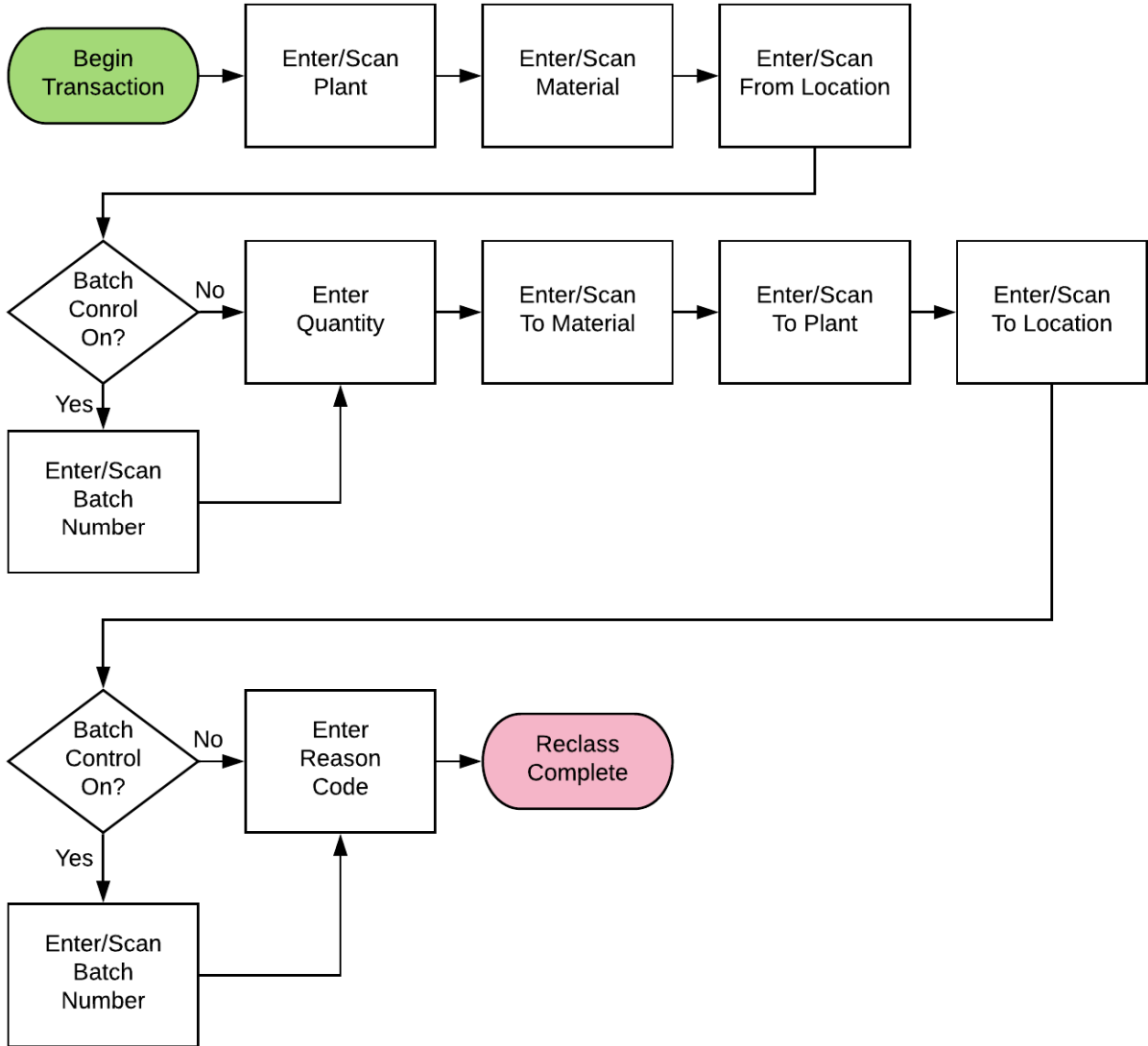
RFgen Functional Documentation

2019

RFgen provides its customers SAP-validated, ready-to-use suites of “Open Source” applications and a development environment that can be used to create new apps or to modify existing apps.

This document describes the business workflow and technical information used in this application.

SAP: Inventory Management (IM) – Inventory Reclassification



FIMIR0200 – Inventory Reclassification

This application performs a reclassification of a material, turning one material into another.



Description of Workflow (1 of 2)

First the user will scan, enter, or search for a plant value.

The user then scans, enters, or searches for a material. To search for a material, the first one or more characters must be entered to reduce the search list results. The material's description will be displayed.

The user scans, enters, or searches for a location where the material exists.

If the material is Batch-controlled, the Batch field will be visible.

The user scans, enters, or searches for a batch number that is assigned to the material specified.

The maximum quantity available of the material is shown based on Plant, Location, and / or Batch values.

The user enters the quantity they wish to reclass.

The user is taken to page 2, and the source material, optional batch, and source location are displayed.

The arrow in the upper left corner of page 1 will take the user back to the menu.





Description of Workflow (2 of 2)

On page 2, the user then scans, enters, or searches for the destination material to be reclassified in the Mat field.

To search for a material, the first one or more characters must be entered to reduce the search list results.

The new material's description will be displayed.

The user will scan, enter, or search for a plant value. The destination plant can be the same as the source.

The user scans, enters, or searches for a location where the material will be placed in inventory.

If the new material is Batch-controlled, the Batch field will be visible.

The user scans, enters, or searches for a batch number to which the new material will belong.

The user scans, enters, or searches for a reason if required. After validation the Submit button appears.

The **Submit** button will post the reclassification of this material to SAP and reset the

application.

The double arrows in the upper left corner of page 2 will take the user back to page 1.

Technical Information

This lists the tables used for validations, searches and defaults by prompt.

Prompt	Table	Description
Plant	T001W	User Property "PLANT"
Mat	BAPI_MATERIAL_GET_DETAIL / BAPI_MATERIAL_GETLIST	
Locn	BAPI_MATERIAL_GETLIST / T320 / T001L / T159L / T156 / MARA / MARC / MARD / MCHB / MSPR / MSKA / LQUA	
Batch	MCHB / LQUA / MARD / MSPR / MSKA	
Qty		
Mat	BAPI_MATERIAL_GET_DETAIL / BAPI_MATERIAL_GETLIST / MARA / MARC	
Plant	T001W	
Locn	BAPI_MATERIAL_GETLIST / T320 / T001L / T159L / T156	
Batch	NA	
Rsn	T156	
App Update	BAPI_GOODSMVT_CREATE	

