

# Deltek Costpoint: Purchasing - Quality Control Inspections

This application checks and records the quality of parts typically after receipt, and records which parts are accepted and which parts are rejected.

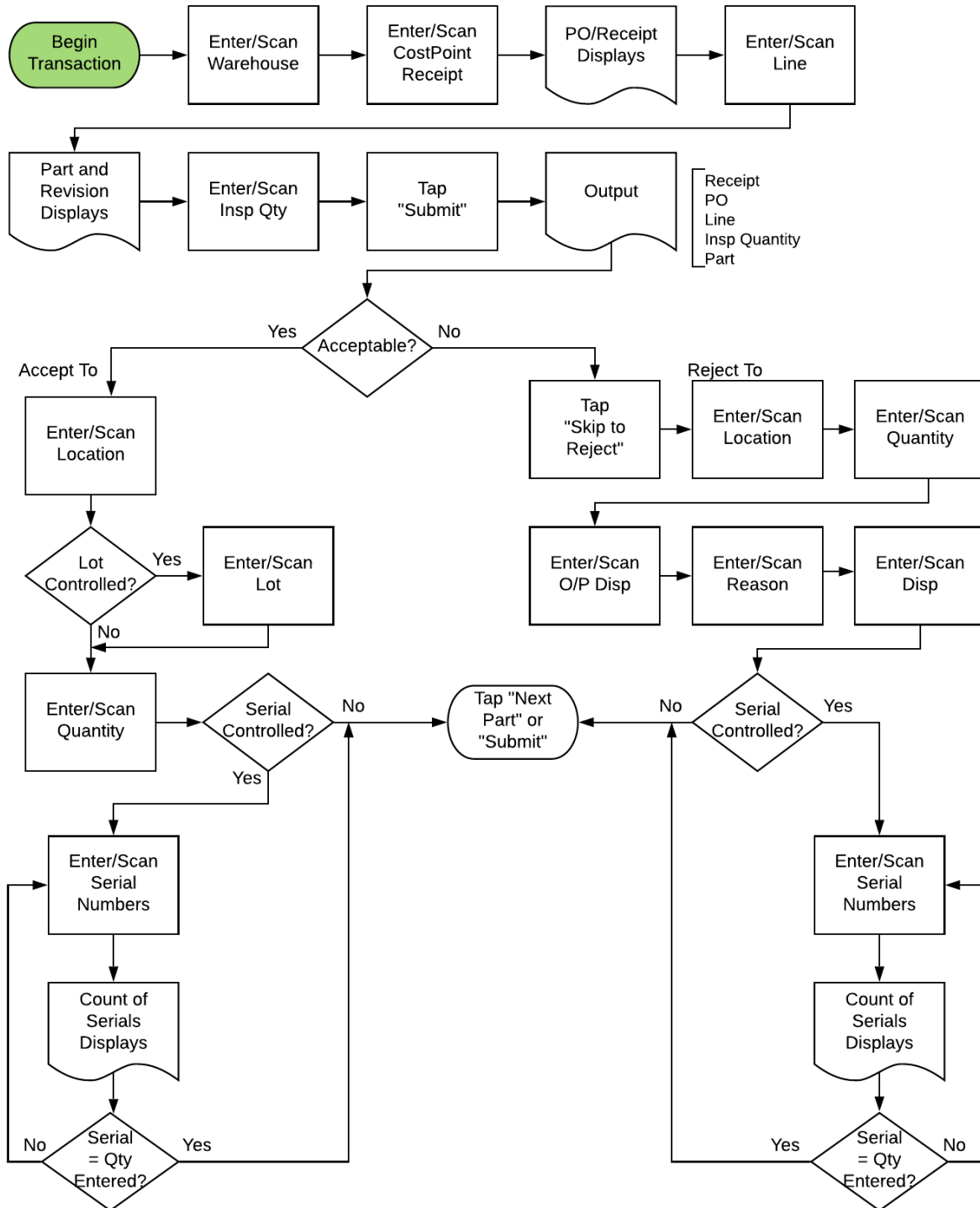
---

## RFgen Functional Documentation 2019

RFgen provides its customers Costpoint-validated, ready-to-use suites of “Open Source” applications and a development environment that can be used to create new apps or to modify existing apps.

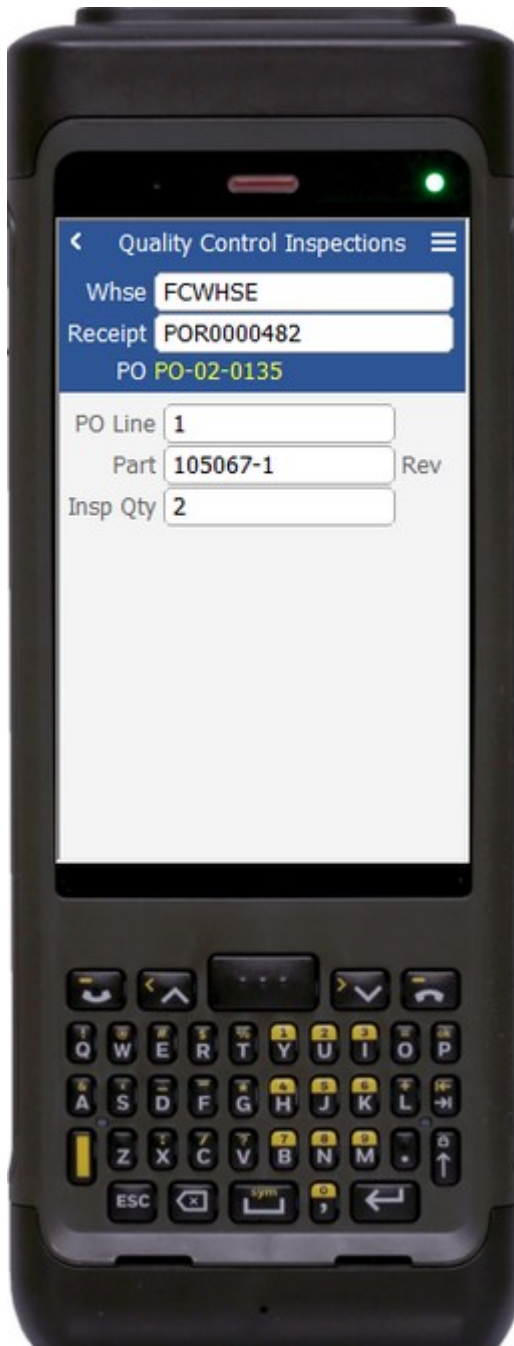
This document describes the business workflow and technical information used in this application.

# Costpoint: Purchasing - Quality Control Inspections Workflow



## FPOQC0300 Purchasing – Quality Control Inspections

This application checks and records the quality of parts, typically after receipt, and records which parts are accepted and which parts are rejected.



### Description of Workflow (1 of 3)

First the user enters, scans, or searches a warehouse value if one is not defaulted automatically from the user properties.

The user enters, scans, or searches for a Costpoint Receipt ID, the identifier created by Costpoint for a receipt.

The PO from the Receipt ID will be displayed.

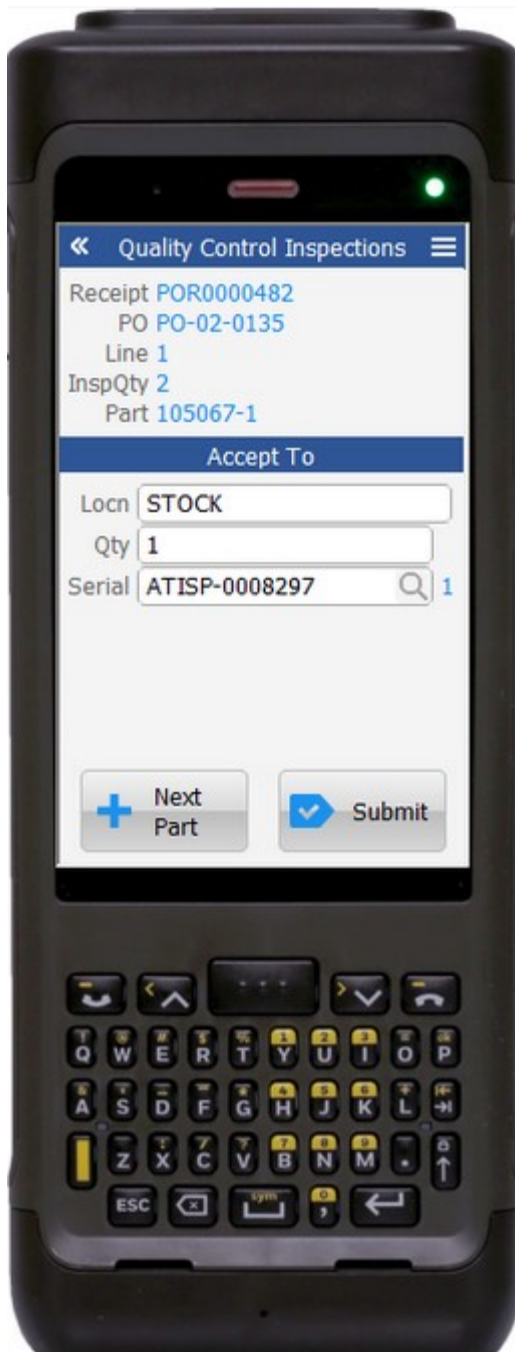
The user enters, scans, or searches a line number on the purchase order. The part and revision on that line will be defaulted.

The user enters the quantity of the part they are inspecting and is taken to page 2 where they can accept parts.

A **Submit** button may show on page 1 if coming back from page 2 and after accumulating parts to accept or reject. It posts the list of parts to Costpoint and restarts the application.

The arrow in the upper left corner will take the user back to the menu.





## Description of Workflow (2 of 3)

Page 2 is used to accept a quantity of the selected part. The Receipt ID, PO, Line, Inspection Quantity, and Part number being evaluated are displayed.

The user enters, scans, or searches an Accept To Location.

If the part is lot-controlled, the user will scan, enter, or search for a lot number.

The user enters the quantity of the part they wish to accept.

If the part is serial-controlled, the user will scan or enter a serial number. A counter to the right of the serial field accumulates how many serials are entered. The focus stays in the Serial field until the same number of entries match the quantity being accepted.

If the user enters a partial quantity, he or she will be taken to page 3 to reject the remaining amount.

If all the current part cannot be accepted, the user would click on the **Skip to Reject** button and reject the entire quantity.

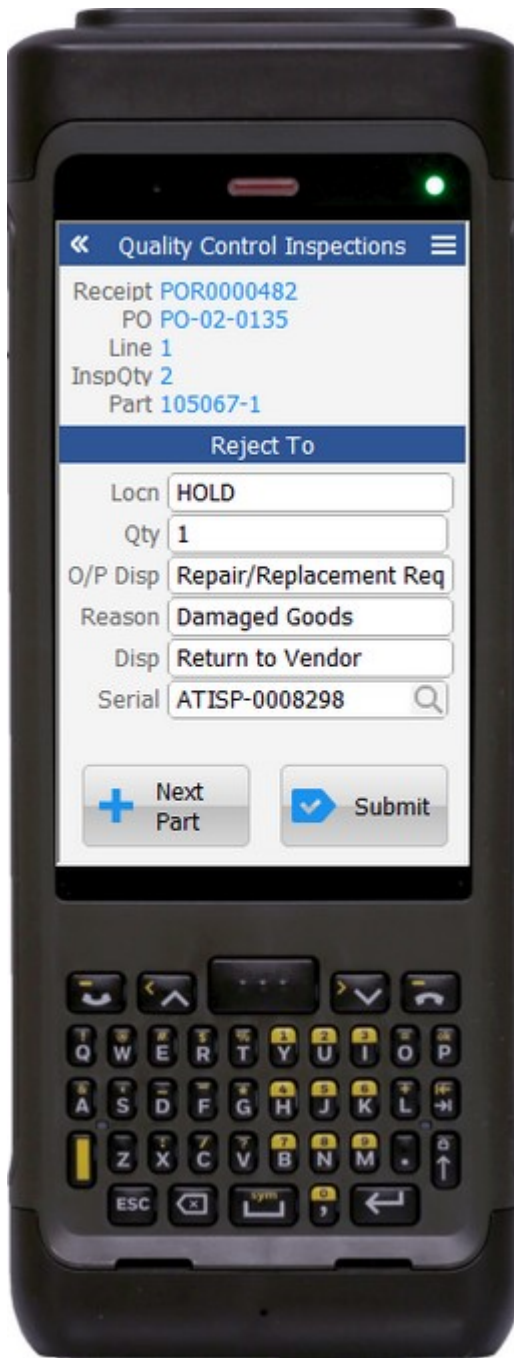
If the user taps the **Next Part** button, the entered values will be stored and accumulated

with other parts until the **Submit** button is tapped on page 1, 2, or 3. The application will then reset back to the Line field.



If the user taps the **Submit** button, the application posts all the parts to Costpoint and restarts the application.

The double arrows in the upper left corner will take the user back to page 1.



### Description of Workflow (3 of 3)

Page 3 is used to reject a quantity of the selected part. The Receipt ID, PO, Line, Inspection Quantity, and Part number being evaluated are displayed.

The user enters, scans, or searches a Reject To Location.

The user enters the quantity being rejected. This should be either all the part quantity or the remaining after a portion was accepted.

The user enters, scans, or searches for an O/P disposition. This is the category of why the part is being rejected.

The user enters, scans, or searches for a reason code.

The user enters, scans, or searches for a disposition. This is the code pertaining to what will be done with the part.

If the part is serial controlled, the user scans or enters a serial number. A counter to the right of the serial field will accumulate how many serials are entered. The focus will stay in the Serial field until the same number of entries match the quantity being rejected.



If the user taps the **Next Line** button, the entered values will be stored and accumulated with other parts until the **Submit** button is tapped on either page 1, page 2, or page 3. The application will then reset back to the Line field.

If the user taps the **Submit** button, the application posts all the parts to Costpoint and restarts the application.

The double arrows in the upper left corner will take the user back to page 2.

## Technical Information

The following describes the tables used for validation, search lists, or functions for a given prompt in this application. If applicable, the default property is also included.

Prompt	Validation / Search – Tables / Web Method	Default Property
Whse	WHSE	
Receipt	RECPT_HDR	
PO Line	RECPT_LN / INVT_TRN_LN / PO_LN	User Property "WarehouseId"
Part	PART / ITEM	
Insp Qty	NA	
Accept Locn	WHSE_LOC	
Accept Lot	INVT_TRN_LN_SR_LT	
Accept Qty	NA	
Accept Serial	INVT_TRN_LN_SR_LT	
Reject Locn	NA	
Reject Qty	NA	
Reject O/P Disp	S_OP_REJ_DSPN_CD	
Reject Reason	RSN_CD	
Reject Disp	S_REJ_DISP_CD	
Reject Serial	INVT_TRN_LN_SR_LT	
App Update	RCMINSP web service	

